

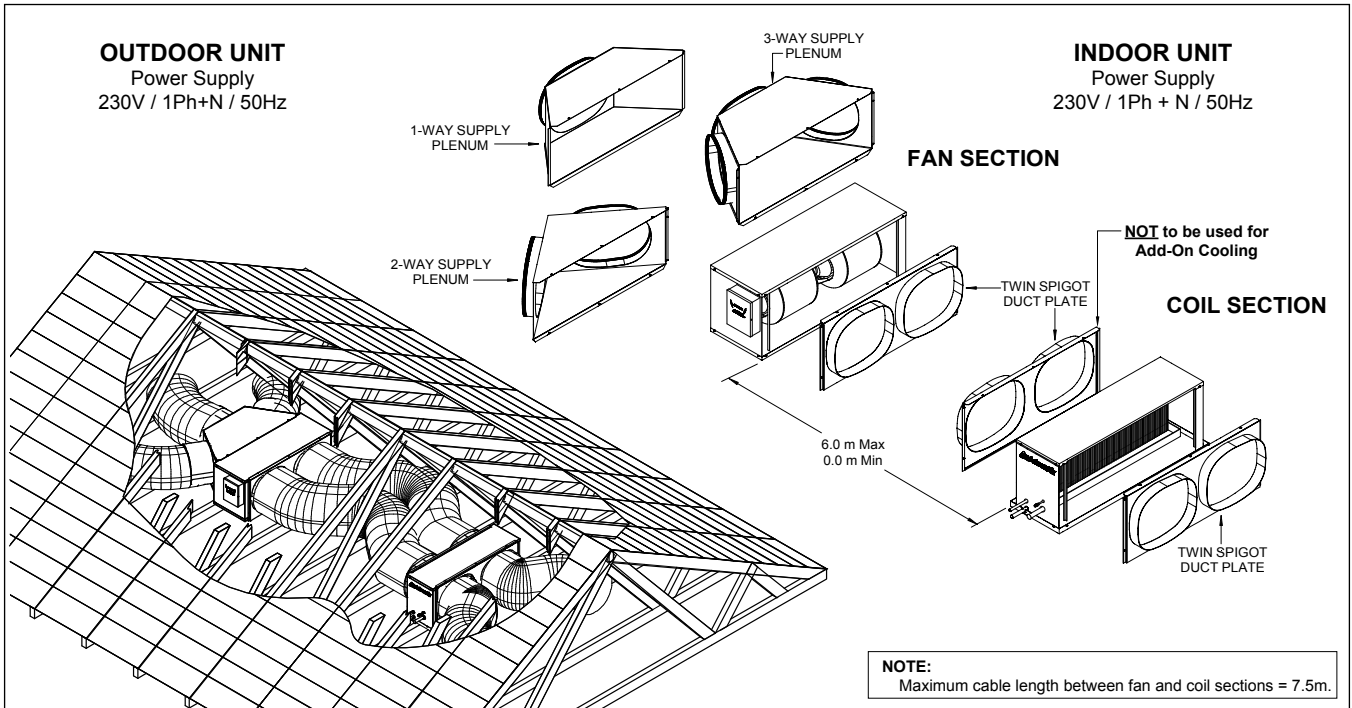
# TWO-PIECE FAN COIL STANDARD CYCLING MODELS

## 1-PHASE MODELS

The innovative 2-PIECE fan coil system can provide a solution to difficult and tight roof space installations. This versatile system comes as a separate fan and coil sections. Each compact and lightweight section is simply installed in two separate locations and is then joined by flexible ducting.

Ducting is attached to each section by either a 1, 2 or 3 way EASY FIT supply plenum or a twin spigot duct plate, these can be fitted to either side of each section.

ADD - ON COOLING is simply achieved by fitting only the coil section into an existing ventilation system.



### UNIT FEATURES

- Designed for ease of installation in difficult roof spaces.
- 3 - Speed Fan Setting.
- Internal Drain Tray.
- External Condensate Drain Tray.
- Mounting studs for perforated hanging strap.
- Incorporates the EASY FIT supply & return air plenum system.
- Reduce return air noise.
- Integrated Fan Coil Safety Tray.
- Supplied with Drain Kit & P-Trap

### MODEL COMBINATION CAPACITY RATINGS AND ELECTRICAL DATA

Outdoor Unit	Indoor Coil Section	Indoor Fan Section	Total Cooling Capacity (kW)	Total Heating Capacity (kW)	Airflow (l/s) (Min / Nom / Max)	RLA (OD / ID / Total)	FLA (OD / ID / Total)
SRA131C	SRA131A	SRG131F	12.75	11.69	590 / 650 / 750	13.9 / 3.8 / 17.7	23.1 / 4.3 / 27.4
SRA151C	SRA151A	SRG151F	15.29	14.84	690 / 770 / 880	17.7 / 2.5 / 20.2	24.0 / 4.3 / 28.3
SRA171C	SRA171A	SRG171F	17.38	17.02	770 / 850 / 900	19.7 / 4.3 / 24.0	30.7 / 4.3 / 35.0

### WEIGHTS AND DIMENSIONS

Coil Section	Weight (kg)	Height (mm)	Depth (mm)	Width (mm)	Fan Section	Weight (kg)	Height (mm)	Depth (mm)	Width (mm)
SRA131A	27	409	342	1054	SRG131F	35	408	362	1072
SRA151A	30	409	342	1252	SRG151F	35	408	362	1072
SRA171A	32	409	342	1252	SRG171F	35	408	362	1072

### NOTES:

- AIRFLOW ACROSS THE COIL MUST BE NO LESS THAN THE COMPLETE FAN SECTIONS MINIMUM AIRFLOW.
- EXTERNAL STATIC PRESSURE IS THE SAME AS THE STANDARD SRG MODEL FAN COIL. REFER TO THE COMPARABLE FAN CURVES FOR EACH MODEL.
- REFER TO INSTALLATION SECTION FOR PLENUM COMBINATION OPTIONS.
- WEIGHTS AND DIMENSIONS ARE NOMINAL VALUES.
- FOR **ADD-ON COOLING**, ACTRONAIR DOES NOT RECOMMEND DUCT PLATE ON SUPPLY SIDE.

