

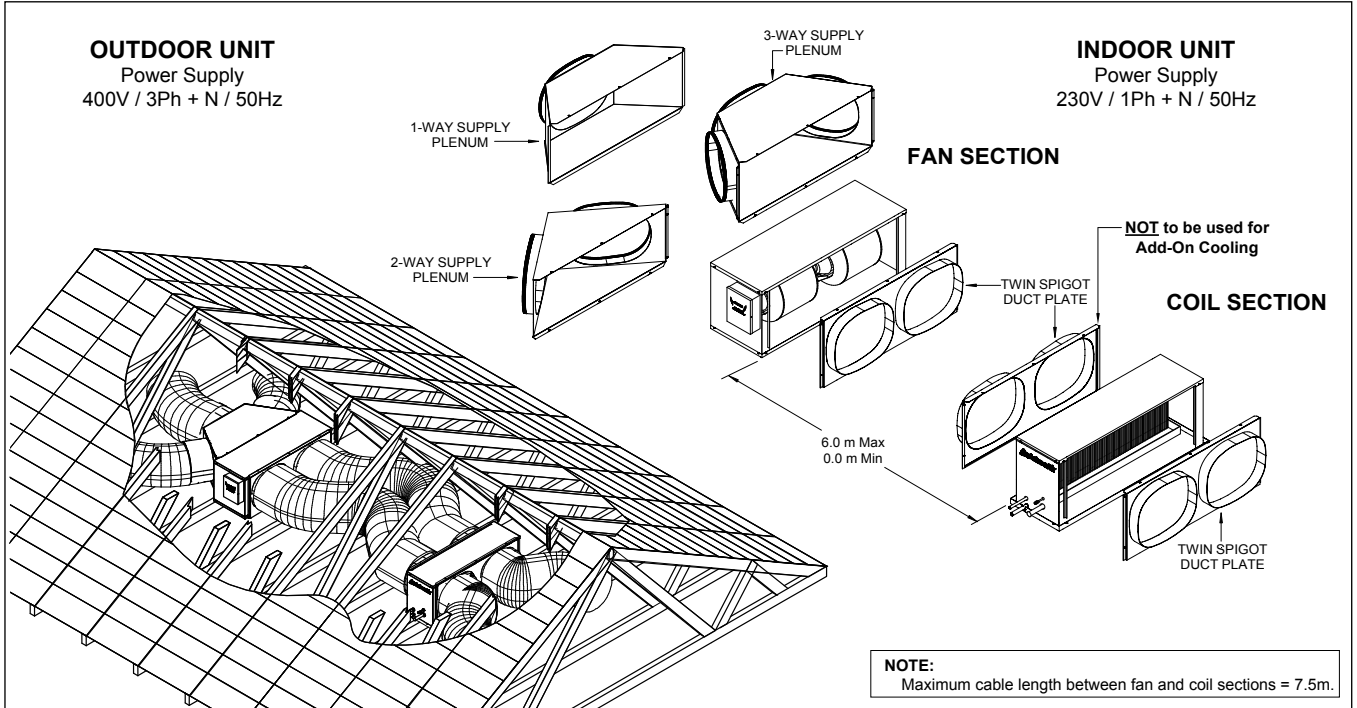
TWO-PIECE FAN COIL STANDARD CYCLING MODELS

3-PHASE MODELS

The innovative 2 - PIECE fan coil system can provide a solution to difficult and tight roof space installations. This versatile system comes as a separate fan and coil sections. Each compact and lightweight section is simply installed in two separate locations and is then joined by flexible ducting.

Ducting is attached to each section by either a 1, 2 or 3 way EASY FIT supply plenum or a twin spigot duct plate, these can be fitted to either side of each section.

ADD - ON COOLING is simply achieved by fitting only the coil section into an existing ventilation system.



UNIT FEATURES

- Designed for ease of installation in difficult roof spaces.
- 3 - Speed Fan Setting.
- Internal Drain Tray.
- External Condensate Drain Tray.
- Mounting studs for perforated hanging strap.
- Incorporates the EASY FIT supply & return air plenum system.
- Reduce return air noise.
- Integrated Fan Coil Safety Tray.
- Supplied with Drain Kit & P-Trap (Except Model SRA230A)

MODEL COMBINATION CAPACITY RATINGS AND ELECTRICAL DATA

Outdoor Unit	Indoor Coil Section	Indoor Fan Section	Total Cooling Capacity (kW)	Total Heating Capacity (kW)	Airflow (l/s) (Min / Nom / Max)	RLA (OD / ID / Total)	FLA (OD / ID / Total)
SRA133C	SRA131A	SRG131F	13.00	11.85	590 / 650 / 750	6.3 / 3.2 / 9.5	8.3 / 4.3 / 12.6
SRA153C	SRA151A	SRG151F	15.27	14.45	690 / 770 / 880	7.1 / 4.2 / 11.3	11.7 / 4.3 / 16.0
SRA173C	SRA171A	SRG171F	17.56	17.38	770 / 850 / 900	8.7 / 4.1 / 12.8	12.3 / 4.3 / 16.6
SRA203C	SRA201A	SRG201F	19.69	18.75	900 / 1000 / 1150	9.0 / 4.5 / 13.5	13.9 / 5.9 / 19.8
SRA233C	SRA231A	SRG231F	22.95	22.30	1020 / 1200 / 1380	12.0 / 4.8 / 16.8	15.9 / 6.4 / 22.3

WEIGHTS AND DIMENSIONS

Coil Section	Weight (kg)	Height (mm)	Depth (mm)	Width (mm)	Fan Section	Weight (kg)	Height (mm)	Depth (mm)	Width (mm)
SRA131A	27	409	342	1054	SRG131F	35	408	362	1072
SRA151A	30	409	342	1252	SRG151F	35	408	362	1072
SRA171A	32	409	342	1252	SRG171F	35	408	362	1072
SRA201A	38	436	342	1360	SRG201F	46	433	412	1268
SRA231A	43	486	342	1410	SRG231F	48	483	412	1268

NOTES:

1. AIRFLOW ACROSS THE COIL MUST BE NO LESS THAN THE COMPLETE FAN SECTIONS MINIMUM AIRFLOW.
2. EXTERNAL STATIC PRESSURE IS THE SAME AS THE STANDARD SRG MODEL FAN COIL. REFER TO THE COMPARABLE FAN CURVES FOR EACH MODEL.
3. REFER TO INSTALLATION SECTION FOR PLENUM COMBINATION OPTIONS.
4. ONE-WAY SUPPLY PLENUM NOT AVAILABLE FOR SRG201F AND SRG230F.
5. THREE-WAY SUPPLY PLENUM NOT AVAILABLE FOR SRG201F.
6. WEIGHTS AND DIMENSIONS ARE NOMINAL VALUES.
7. FOR ADD-ON COOLING, ACTRONAIR DOES NOT RECOMMEND DUCT PLATE ON SUPPLY SIDE.

