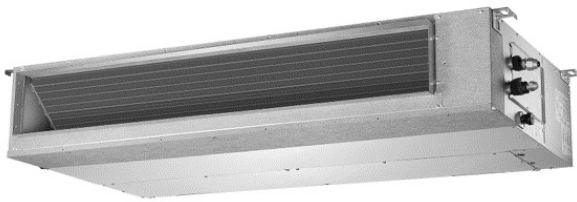


ULTRASLIM 2

Split Unit

Troubleshooting Guide



Model Numbers

LRC-071CS / LRE-071CS

LRC-100CS / LRE-100CS

URC-125CS / LRE-125CS

URC-140CS / LRE-140CS

LRC-170CS / LRE-170CS

IMPORTANT NOTE:

Please read this manual carefully before installing or operating your air conditioning unit.

That's better. That's Actron.



Table of Contents

01. Safety Caution	3
02. General Troubleshooting	4
02.01. Error Display (Indoor Unit)	4
02.02. Error Display (For Some Outdoor Units)	5
03. Information Inquiry.....	6
04. Outdoor Unit Point Check Function	9
05. Error Diagnosis and Troubleshooting Without Error Code	11
05.01. Remote maintenance	11
05.02. Field maintenance	12
06. Quick Maintenance by Error Code	17
07. Troubleshooting by Error Code.....	18
07.01. EH 00/ EH 0A / EC 51/F4 (EEPROM Parameter Error Diagnosis and Solution)	18
07.02. EL 01/E1 (Indoor and Outdoor Unit Communication Error Diagnosis and Solution)..	19
07.03. EH 03 / EC 07 / F5 / EC 71	22
07.04. EH 60 / EH 61 / EC 53 / EC 52 / EC 54 / EC 56 / EC 50 / F1 / F2 / F3 / P7	26
07.05. EL 0C (Refrigerant Leakage Detection Diagnosis and Solution).....	27
07.06. EH 0E(Water-Level Alarm Malfunction Diagnosis and Solution).....	28
07.07. PC 00 /P0 / PC 04 /P4.....	29
07.08. PC 01 / P1 / PC10 / PC11 / PC12	30
07.09. PC 03 / PC 31 / J6 (Low Pressure Protection Diagnosis and Solution)	31
07.10. PC 02 / P2	32
07.11. EC 0d (Outdoor unit malfunction Diagnosis and Solution).....	33
07.12. PC 40 / J4	33
07.13. PC 08 / F0 / PC 46 / PC 49.....	34
07.14. PC 0F / J3(PFC module protection diagnosis and solution)	36
07.15. EC 72 (Lack phase failure of outdoor DC fan motor diagnosis and solution).....	37
07.16. PC 43 (Outdoor compressor lack phase protection diagnosis and solution)	38
07.17. PC 45 (Outdoor unit IR chip drive failure diagnosis and solution).....	39
07.18. PC 0L/LP (Low ambient temperature protection)	39
07.19. PC 30/J5 (High pressure protection diagnosis and solution).....	39
07.20. PC 0A/J1 (High temperature protection of condenser diagnosis and solution).....	41
07.21. PC 06/J2 (Discharge temperature protection of compressor diagnosis and solution).....	42
07.22. J0 (High temperature protection of evaporator diagnosis and solution)	43
07.23. J8 (AC power input voltage protection diagnosis and solution)	44
07.24. EH 0b(Communication error between indoor two chips diagnosis and solution)	45
07.25. EH bA / EH 3A / EH 3b	46
08. Check Procedures	47
08.01. Temperature Sensor Check.....	47
08.02. Compressor Check.....	47
08.03. IPM Continuity Check.....	49

01. Safety Caution

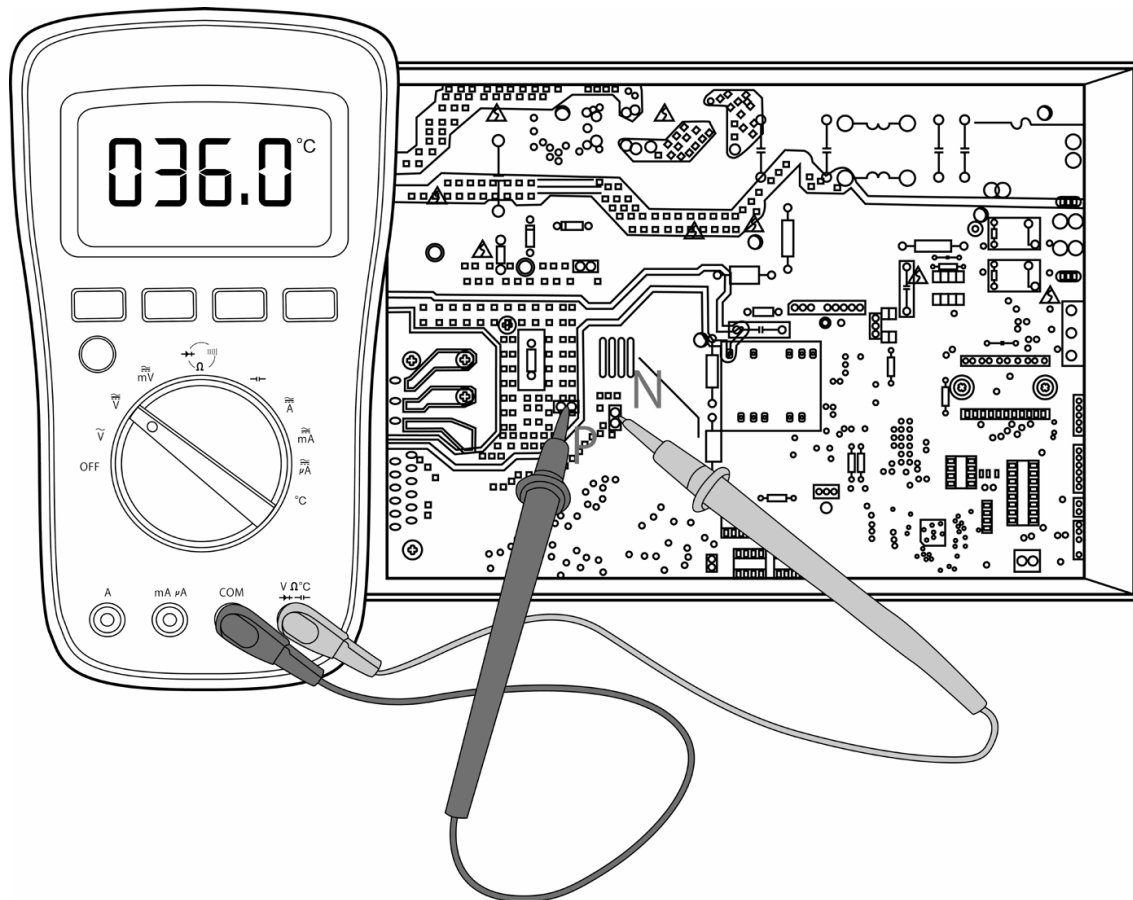
WARNING

Be sure to turn off all power supplies or disconnect all wires to avoid electric shock. While checking indoor/outdoor PCB, please equip oneself with anti-static gloves or wrist strap to avoid damage to the board.

Electricity remains in capacitors even when the power supply is off.

Ensure the capacitors are fully discharged before troubleshooting.

Test the voltage between P and N on back of the main PCB with multimeter. If the voltage is lower than 36V, the capacitors are fully discharged. For models that cannot be measured, wait 5 minutes after the power supply is off to ensure that the capacitors are fully discharged.



Note: This picture is for reference only. Actual appearance may vary.

02. General Troubleshooting

02.01. Error Display (Indoor Unit)

When the indoor unit encounters a recognized error, the operation lamp will flash in a corresponding series, the timer lamp may turn on or begin flashing, and an error code will be displayed. These error codes are described in the following table:

Operation Lamp	Timer Lamp	Display	Error Information	Solution
1 time	OFF	E400/ E40R	Indoor unit EEPROM parameter error	TS22
2 times	OFF	E401	Indoor / outdoor unit communication error	TS23
4 times	OFF	E403	The indoor fan speed is operating outside of the normal range(for some models)	TS26
6 times	OFF	E460	Indoor room temperature sensor T1 is in open circuit or has short circuited	TS30
6 times	OFF	E461	Evaporator coil temperature sensor T2 is in open circuit or has short circuited	TS30
8 times	OFF	E40C	Refrigerant Leakage Detection(for some models)	TS31
9 times	OFF	E40b	Communication error between indoor two chips	TS51
13 times	OFF	E40E	Water-level alarm malfunction	TS32
5 times	OFF	E453	Outdoor room temperature sensor T4 is in open circuit or has short circuited	TS30
5 times	OFF	E452	Condenser coil temperature sensor T3 is in open circuit or has short circuited	TS30
5 times	OFF	E454	Compressor discharge temperature sensor TP is in open circuit or has short circuited	TS30
5 times	OFF	E456	Evaporator coil outlet temperature sensor T2B is in open circuit or has short circuited(for free-match indoor units)	TS30
5 times	ON	E451	Outdoor unit EEPROM parameter error	TS22
12 times	OFF	E407	The outdoor fan speed is operating outside of the normal range(for some models)	TS26
7 times	FLASH	P400	IPM malfunction or IGBT over-strong current protection	TS33
2 times	FLASH	P401	Over voltage or over low voltage protection	TS34
3 times	FLASH	P402	Top temperature protection of compressor or High temperature protection of IPM module	TS36
5 times	FLASH	P404	Inverter compressor drive error	TS33
7 times	FLASH	P403	High pressure protection or low pressure protection (for some models)	TS45/ TS35
14 times	OFF	E40d	Outdoor unit malfunction	TS37
--	--	E4bR	Communication malfunction between external fan module and indoor unit	TS52

4 times	OFF	EH 3A	External fan DC bus voltage is too low protection	TS52
4 times	OFF	EH 3B	External fan DC bus voltage is too high fault	TS52
1 time	ON	--	Indoor units mode conflict(match with multi outdoor unit) (for some models)	--

For other errors:

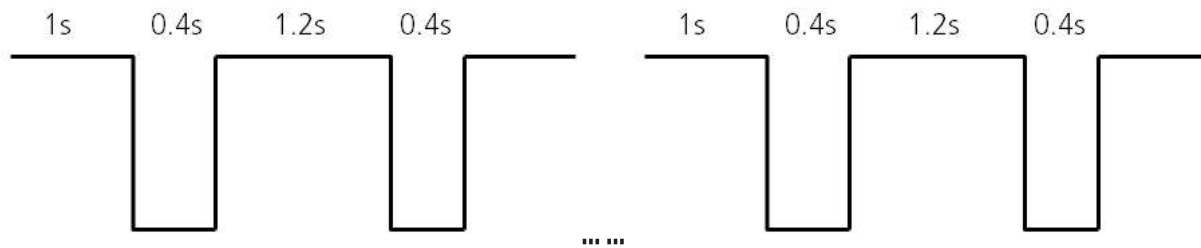
The display board may show a garbled code or a code undefined by the service manual. Ensure that this code is not a temperature reading.

Troubleshooting:

Test the unit using the remote control. If the unit does not respond to the remote, the indoor PCB requires replacement.

If the unit responds, the display board requires replacement.

LED flash frequency:



02.02. Error Display (For Some Outdoor Units)

Display	Malfunction or Protection	Solution
EE 5i	Outdoor EEPROM malfunction	TS22
EL 0i	Indoor / outdoor units communication error	TS23
PC 40	Communication malfunction between IPM board and outdoor main board	TS38
PC 08	Outdoor overcurrent protection	TS39
PC 10	Outdoor unit low AC voltage protection	TS34
PC 11	Outdoor unit main control board DC bus high voltage protection	TS34
PC 12	Outdoor unit main control board DC bus high voltage protection /341 MCE error	TS34
PC 00	IPM module protection	TS33
PC 0F	PFC module protection	TS41
EE 71	Over current failure of outdoor DC fan motor	TS26
EE 72	Lack phase failure of outdoor DC fan motor	TS42
EE 07	Outdoor fan speed has been out of control	TS26
PC 43	Outdoor compressor lack phase protection	TS43
PC 44	Outdoor unit zero speed protection	TS39
PC 45	Outdoor unit IR chip drive failure	TS44
PC 46	Compressor speed has been out of control	TS39
PC 49	Compressor overcurrent failure	TS39
PC 30	High pressure protection	TS45
PC 31	Low pressure protection	TS35

Display	Malfunction or Protection	Solution
PC0R	High temperature protection of condenser	TS47
PC0B	Temperature protection of compressor discharge	TS48
PC0E	Top temperature protection of compressor	TS36
EC52	Condenser coil temperature sensor T3 is in open circuit or has short circuited	TS30
EC53	Outdoor room temperature sensor T4 is in open circuit or has short circuited	TS30
EC54	Compressor discharge temperature sensor TP is in open circuit or has short circuited	TS30
EC50	Open or short circuit of outdoor unit temperature sensor(T3,T4,TP)	TS30
PC0L	Low ambient temperature protection	TS44
E1	Indoor / outdoor units communication error	TS23
F0	Outdoor overcurrent protection	TS39
F1	Outdoor room temperature sensor T4 is in open circuit or has short circuited	TS30
F2	Condenser coil temperature sensor T3 is in open circuit or has short circuited	TS30
F3	Compressor discharge temperature sensor TP is in open circuit or has short circuited	TS30
F4	Outdoor EEPROM malfunction	TS22
F5	Outdoor fan speed has been out of control	TS26
P0	IPM module protection	TS33
P1	Over voltage or over low voltage protection	TS34
P2	Top temperature protection of compressor	TS36
P4	Inverter compressor drive error	TS33
J0	High temperature protection of evaporator	TS49
J1	High temperature protection of condenser	TS47
J2	Temperature protection of compressor discharge	TS48
J3	PFC module protection	TS41
J4	Communication malfunction between IPM board and outdoor main board	TS38
J5	High pressure protection	TS45
J6	Low pressure protection	TS35
P7	IGBT temperature sensor TH is in open circuit or has short circuited	TS30
J8	AC power input voltage protection	TS50
LP	Low ambient temperature protection	TS44

03. Information Inquiry

- To enter information inquiry status, complete the following procedure within ten seconds:
 - Press LED(or DO NOT DISTURB) 3 times.
 - Press SWING(or AIR DIRECTION) 3 times.
- Finish 1 and 2 within 10 seconds, you will hear beeps for two seconds, which means the unit goes into parameter checking mode.
- Use the LED(or DO NOT DISTURB) and SWING(or AIR DIRECTION) buttons to cycle through information displayed.
- Pressing LED(or DO NOT DISTURB) will display the next code in the sequence. Pressing SWING(or AIR DIRECTION) will show the previous.
- The following table shows information codes. The screen will display this code for two seconds, then the information for 25 seconds.

Displayed code	Explanation	Displayed value	Meaning	Additional Notes
T1	Room temperature	-1F,-1E,-1d,-1c,-1b,-1A -19—99 A0,A1,...A9 b0,b1,...b9 c0,c1,...c9 d0,d1,...d9 E0,E1,...E9 F0,F1,...F9	-25,-24,-23,-22,-21,-20 -19—99 100,101,...109 110,111,...119 120,121,...129 130,131,...139 140,141,...149 150,151,...159	<ol style="list-style-type: none"> All displayed temperatures use actual values. All temperatures are displayed in °C regardless of remote used. T1, T2, T3, T4, and T2B display ranges from -25 to 70 °C. TP display ranges from -20 to 130 °C. The frequency display ranges from 0 to 159HZ. If the actual values exceed or fall short of the defined range, the values closest to the maximum and minimum values will be displayed.
T2	Indoor coil temperature			
T3	Outdoor coil temperature			
T4	Ambient temperature			
TB	Outlet temperature of indoor coil			
TP	Discharge temperature			
TH	Suction temperature			
FT	Targeted frequency			
FR	Actual frequency			
IF	Indoor fan speed	0	OFF	N/A
		1,2,3,4	Low speed, Medium speed, High speed, Turbo.	Used for some large capacity motors.
OF	Outdoor fan speed	14-FF	Actual fan speed is equal to the display value converted to decimal value and multiplied by 10. This is measured in RPM.	Used for some small capacity motors. The display value is 14-FF (hexadecimal). The corresponding fan speed ranges from 200 to 2550RPM.
		0-FF	Actual EXV opening value is equal to the display value converted to decimal value and then multiplied by 2.	-
LR	EXV opening angle	0-FF	Actual EXV opening value is equal to the display value converted to decimal value and then multiplied by 2.	-
CT	Compressor continuous running time	0-FF	0-255 minutes	If the actual value exceeds or falls short of the defined range, the value closest to the maximum and minimum will be displayed.
ST	Causes of compressor stop	0-99	For a detailed explanation, contact technical support.	-

Displayed code	Explanation	Displayed value	Meaning	Additional Notes
R0	Reserved	0-FF	-	-
R1				
b0				
b1				
b2				
b3				
b4				
b5				
b6				
dL				
Rc				
Uo				
Td				
NR				
CF				
PR				
Po				

04. Outdoor Unit Point Check Function

- A check switch is included on the outdoor PCB.
- Push SW1 to check the unit's status while running. The digital display shows the following codes each time the SW1 is pushed.

Number of Presses	Display	Remark
00	Normal display	Displays running frequency, running state, or malfunction code
01	Indoor unit capacity demand code	Actual data*HP*10 If capacity demand code is higher than 99, the digital display tube will show single digit and tens digit. (For example, the digital display tube show "5.0",it means the capacity demand is 15. the digital display tube show "60",it means the capacity demand is 6.0)
02	Amendatory capacity demand code	
03	The frequency after the capacity requirement transfer	
04	The frequency after the frequency limit	
05	The frequency of sending to 341 chip	
06	Indoor unit evaporator temperature (T2)	If the temp. is lower than 0 degree, the digital display tube will show "0".If the temp. is higher than 70 degree, the digital display tube will show "70".
07	Condenser pipe temp.(T3)	If the temp. is lower than -9 degree, the digital display tube will show "-9".If the temp. is higher than 70 degree, the digital display tube will show "70". If the indoor unit is not connected, the digital display tube will show: "--"
08	Outdoor ambient temp.(T4)	
09	Compressor discharge temp. (T5)	The display value is between 13~129 degree. If the temp. is lower than 13 degree, the digital display tube will show "13". If the temp. is higher than 99 degree, the digital display tube will show single digit and tens digit. (For example, the digital display tube show "0.5",it means the compressor discharge temp. is 105 degree. the digital display tube show "1.6",it means the compressor discharge temp. is 116 degree)

Number of Presses	Display	Remark	
09	Compressor discharge temp. (T5)	lower than 13 degree, the digital display tube will show "13". If the temp. is higher than 99 degree, the digital display tube will show single digit and tens digit. (For example, the digital display tube show "0.5", it means the compressor discharge temp. is 105 degree. the digital display tube show "1.6", it means the compressor discharge temp. is 116 degree)	
10	AD value of current	The display value is a hex number.	
11	AD value of voltage	For example, the digital display tube shows "Cd", it means AD value is 205.	
12	Indoor unit running mode code	Standby:0, Fan only 1, Cooling:2, Heating:3, Forced cooling:4, Drying:6, Self clean:8	
13	Outdoor unit running mode code	Standby:0, Fan only 1, Cooling:2, Heating:3, Forced cooling:4, Drying:6, Self clean:8	
14	EXV open angle	Actual data/4. If the value is higher than 99, the digital display tube will show single digit and tens digit. For example, the digital display tube show "2.0", it means the EXV open angle is 120×4=480p.)	
15	Frequency limit symbol	Bit7 Frequency limit caused by IGBT radiator	The display value is a hexadecimal number. For example, the digital display show 2A, then Bit5=1, Bit3=1, and Bit1=1. This means that a frequency limit may be caused by T4, T3, or the current.
		Bit6 Frequency limit caused by PFC	
		Bit5 Frequency limit caused by high temperature of T2.	
		Bit4 Frequency limit caused by low temperature of T2.	
		Bit3 Frequency limit caused by T3.	
		Bit2 Frequency limit caused by T5.	
		Bit1 Frequency limit caused by current	
Bit0 Frequency limit caused by voltage			
16	Outdoor unit fan motor state	Off: 0, Turbo:1 High speed:2, Med speed: 3, Low speed: 4, Breeze:5, Super breeze: 6 other speed:7	
17	IGBT radiator temp.	The display value is between 0~130 degree. If the temp. is higher than 99 degree, the digital display tube will show single digit and tens digit. (For example, the digital display tube show "0.5", it means the IGBT radiator temp. is 105 degree. the digital display tube show "1.6", it means the IGBT radiator temp. is 116 degree)	
18	Indoor unit number	The indoor unit can communicate with outdoor unit well. General:1, Twins:2	
19	Evaporator pipe temp. T2 of 1# indoor unit	If the temp. is lower than 0 degree, the digital display tube will show "0". If the temp. is higher than 70 degree, the digital display tube will show "70". If the indoor unit is not connected, the digital display tube will show: "--"(heating T2, cooling T2B)	
20	Evaporator pipe temp. T2 of 2# indoor unit		
21	Reserved		
22	1# Indoor unit capacity demand code	Actual data*HP*10	
23	2# Indoor unit capacity demand code	If capacity demand code is higher than 99, the digital display tube will show single digit and tens digit. (For example, the digital display tube show "5.0", it means the capacity demand is 15. the digital display tube show "60", it means the capacity demand is 6.0). If the indoor unit is not connected, the digital display tube will show: "--"	
24	Reserved		

Number of Presses	Display	Remark
25	Room temp. T1 of 1# indoor unit	If the temp. is lower than -9 degree, the digital display tube will show "-9".If the temp. is higher than 70 degree, the digital display tube will show "70". If the indoor unit is not connected, the digital display tube will show: "--"
26	Room temp. T1 of 2# indoor unit	If the temp. is lower than 0 degree, the digital display tube will show "0".If the temp. is higher than 70 degree, the digital display tube will show "70". If the indoor unit is not connected, the digital display tube will show: "--"
27	Average room temp. T1	
28	Reason of stop	
29	Evaporator pipe temp. T2B of 1# indoor unit	If the temp. is lower than -9 degree, the digital display tube will show "-9".If the temp. is higher than 70 degree, the digital display tube will show "70". If the indoor unit is not connected, the digital display tube will show: "--"
30	Evaporator pipe temp. T2B of 2# indoor unit	If the temp. is lower than 0 degree, the digital display tube will show "0".If the temp. is higher than 70 degree, the digital display tube will show "70". If the indoor unit is not connected, the digital display tube will show: "--"

05. Error Diagnosis and Troubleshooting Without Error Code

WARNING

Be sure to turn off unit before any maintenance to prevent damage or injury.

05.01. Remote maintenance

SUGGESTION: When troubles occur, please check the following points with customers before field maintenance.

No.	Problem	Solution
1	Unit will not start	TS23 - TS18
2	The power switch is on but fans will not start	TS23 - TS18
3	The temperature on the display board cannot be set	TS23 - TS18
4	Unit is on but the wind is not cold(hot)	TS23 - TS18
5	Unit runs, but shortly stops	TS23 - TS18
6	The unit starts up and stops frequently	TS23 - TS18
7	Unit runs continuously but insufficient cooling(heating)	TS23 - TS18
8	Cool can not change to heat	TS23 - TS18
9	Unit is noisy	TS23 - TS18

05.02. Field maintenance

	Problem	Solution
1	Unit will not start	TS19 - TS26
2	Compressor will not start but fans run	TS19 - TS26
3	Compressor and condenser (outdoor) fan will not start	TS19 - TS26
4	Evaporator (indoor) fan will not start	TS19 - TS26
5	Condenser (Outdoor) fan will not start	TS19 - TS26
6	Unit runs, but shortly stops	TS19 - TS26
7	Compressor short-cycles due to overload	TS19 - TS26
8	High discharge pressure	TS19 - TS26
9	Low discharge pressure	TS19 - TS26
10	High suction pressure	TS19 - TS26
11	Low suction pressure	TS19 - TS26
12	Unit runs continuously but insufficient cooling	TS19 - TS26
13	Too cool	TS19 - TS26
14	Compressor is noisy	TS19 - TS26
15	Horizontal louver can not revolve	TS19 - TS26

1.Remote Maintenance	Electrical Circuit				Refrigerant Circuit													
Possible causes of trouble	Power failure																	
	The main power tripped																	
	Loose connections																	
	Faulty transformer																	
	The voltage is too high or too low																	
	The remote control is powered off																	
	Broken remote control																	
	Dirty air filter																	
	Dirty condenser fins																	
	The setting temperature is higher/lower than the room's (cooling/heating)																	
The ambient temperature is too high/low when the mode is cooling/heating																		
Fan mode																		
SILENCE function is activated(optional function)																		
Frosting and defrosting frequently																		
Unit will not start	☆	☆	☆	☆														
The power switch is on but fans will not start			☆	☆	☆													
The temperature on the display board cannot be set						☆	☆											
Unit is on but the wind is not cold(hot)										☆	☆	☆						
Unit runs, but shortly stops					☆					☆	☆							
The unit starts up and stops frequently					☆					☆	☆					☆		
Unit runs continuously but insufficient cooling(heating)								☆	☆	☆	☆		☆					
Cool can not change to heat																		
Unit is noisy																		
Test method / remedy	Test voltage																	
	Close the power switch																	
	Inspect connections - tighten																	
	Change the transformer																	
	Test voltage																	
	Replace the battery of the remote control																	
	Replace the remote control																	
	Clean or replace																	
	Clean																	
	Adjust the setting temperature																	
Turn the AC later																		
Adjust to cool mode																		
Turn off SILENCE function.																		
Turn the AC later																		

1.Remote Maintenance	Others					
Possible causes of trouble	Heavy load condition					
	Loosen hold down bolts and / or screws					
	Bad airproof					
	The air inlet or outlet of either unit is blocked					
	Interference from cell phone towers and remote boosters					
	Shipping plates remain attached					
Unit will not start						
The power switch is on but fans will not start					☆	
The temperature on the display board cannot be set						
Unit is on but the wind is not cold(hot)						
Unit runs, but shortly stops						
The unit starts up and stops frequently				☆		
Unit runs continuously but insufficient cooling(heating)	☆		☆	☆		
Cool can not change to heat						
Unit is noisy		☆				☆
Test method / remedy	Check heat load					
	Tighten bolts or screws					
	Close all the windows and doors					
	Remove the obstacles					
	Reconnect the power or press ON/OFF button on remote control to restart operation					
	Remove them					

2.Field Maintenance	Refrigerant Circuit										Others												
Possible causes of trouble	Compressor stuck	Shortage of refrigerant	Restricted liquid line	Dirty air filter	Dirty evaporator coil	Insufficient air through evaporator coil	Overcharge of refrigerant	Dirty or partially blocked condenser	Air or incompressible gas in refrigerant cycle	Short cycling of condensing air	High temperature condensing medium	Insufficient condensing medium	Broken compressor internal parts	Inefficient compressor	Expansion valve obstructed	Expansion valve or capillary tube closed completely	Leaking power element on expansion valve	Poor installation of feeler bulb	Heavy load condition	Loosen hold down bolts and / or screws	Shipping plates remain attached	Poor choices of capacity	Contact of piping with other piping or external plate
Unit will not start																							
Compressor will not start but fans run	☆																						
Compressor and condenser (outdoor) fan will not start																							
Evaporator (indoor) fan will not start																							
Condenser (Outdoor) fan will not start																							
Unit runs, but shortly stops		☆	☆				☆	☆								☆	☆						
Compressor short-cycles due to overload		☆					☆	☆															
High discharge pressure							☆	☆	☆	☆	☆												
Low discharge pressure		☆												☆									
High suction pressure							☆							☆				☆	☆				
Low suction pressure		☆	☆	☆	☆	☆									☆	☆	☆						
Unit runs continuously but insufficient cooling		☆	☆	☆	☆	☆		☆	☆	☆				☆					☆			☆	
Too cool																							
Compressor is noisy							☆						☆							☆	☆		☆
Horizontal louver can not revolve																							
Test method / remedy	Replace the compressor	Leak test	Replace restricted part	Clean or replace	Clean coil	Check fan	Change charged refrigerant volume	Clean condenser or remove obstacle	Purge, evacuate and recharge	Remove obstruction to air flow	Remove obstruction in air or water flow	Remove obstruction in air or water flow	Replace compressor	Test compressor efficiency	Replace valve	Replace valve	Replace valve	Fix feeler bulb	Check heat load	Tighten bolts or screws	Remove them	Choose AC of larger capacity or add the number of AC	Rectify piping so as not to contact each other or with external plate

2.Field Maintenance	Electrical Circuit														
Possible causes of trouble	Power failure	Blown fuse or varistor	Loose connections	Shorted or broken wires	Safety device opens	Faulty thermostat / room temperature sensor	Wrong setting place of temperature sensor	Faulty transformer	Shorted or open capacitor	Faulty magnetic contactor for compressor	Faulty magnetic contactor for fan	Low voltage	Faulty stepping motor	Shorted or grounded compressor	Shorted or grounded fan motor
Unit will not start	☆	☆	☆	☆	☆			☆							
Compressor will not start but fans run				☆		☆			☆	☆				☆	
Compressor and condenser (outdoor) fan will not start				☆		☆				☆					
Evaporator (indoor) fan will not start				☆					☆		☆				☆
Condenser (Outdoor) fan will not start				☆		☆			☆		☆				☆
Unit runs, but shortly stops										☆		☆			
Compressor short-cycles due to overload										☆		☆			
High discharge pressure															
Low discharge pressure															
High suction pressure															
Low suction pressure															
Unit runs continuously but insufficient cooling															
Too cool						☆	☆								
Compressor is noisy															
Horizontal louver can not revolve			☆	☆									☆		
Test method / remedy	Test voltage	Inspect fuse type & size	Inspect connections - tighten	Test circuits with tester	Test continuity of safety device	Test continuity of thermostat / sensor & wiring	Place the temperature sensor at the central of the air inlet grille	Check control circuit with tester	Check capacitor with tester	Test continuity of coil & contacts	Test continuity of coil & contacts	Test voltage	Replace the stepping motor	Check resistance with multimeter	Check resistance with multimeter

06. Quick Maintenance by Error Code

If you do not have the time to test which specific parts are faulty, you can directly change the required parts according to the error code.

You can find the parts to replace by error code in the following table.

Part requiring replacement	Error Code							
	EH 00/EH 0R	EL 01	EH 03	EH 60	EH 61	EL 0C	EH 0E	EC 53
Indoor PCB	✓	✓	✓	✓	✓	✓	✓	x
Outdoor PCB	x	✓	x	x	x	x	x	✓
Indoor fan motor	x	x	✓	x	x	x	x	x
T1 sensor	x	x	x	✓	x	x	x	x
T2 Sensor	x	x	x	x	✓	✓	✓	x
T3 Sensor	x	x	x	x	x	x	x	x
T4 Sensor	x	x	x	x	x	x	x	✓
Reactor	x	✓	x	x	x	x	x	x
Compressor	x	x	x	x	x	x	x	x
Additional refrigerant	x	x	x	x	x	✓	✓	x
Water-level switch	x	x	x	x	x	x	✓	x
Water pump	x	x	x	x	x	x	✓	x

Part requiring replacement	EC 54	EC 51	EC 52	EC 07	PC 00	PC 01	PC 02	PC 04	PC 03
Indoor PCB	x	x	x	x	x	x	x	x	x
Outdoor PCB	✓	✓	✓	✓	✓	✓	✓	✓	✓
Outdoor fan motor	x	x	x	✓	✓	x	✓	✓	x
T3 Sensor	x	x	✓	x	x	x	x	x	x
TP Sensor	✓	x	x	x	x	x	x	x	x
Reactor	x	x	x	x	x	✓	x	x	x
Compressor	x	x	x	x	✓	x	x	✓	x
IPM module board	x	x	x	x	✓	✓	✓	✓	x
Low pressure protector	x	x	x	x	x	x	x	x	✓
Additional refrigerant	x	x	x	x	x	x	x	x	✓

NOTES

For certain models, outdoor PCB could not be removed separately. In this case, the outdoor electric control box should be replaced as a whole.

07. Troubleshooting by Error Code

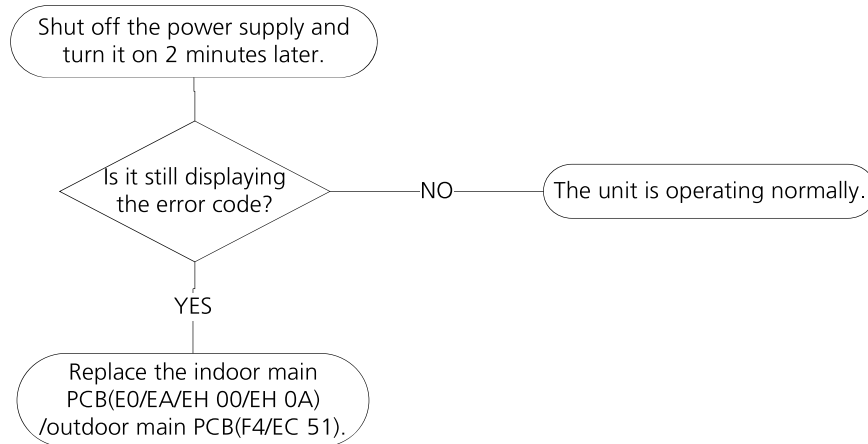
07.01. EH 00/ EH 0A / EC 51/F4 (EEPROM Parameter Error Diagnosis and Solution)

Description: Indoor or outdoor PCB main chip does not receive feedback from EEPROM chip.

Recommended parts to prepare:

- Indoor PCB
- Outdoor PCB

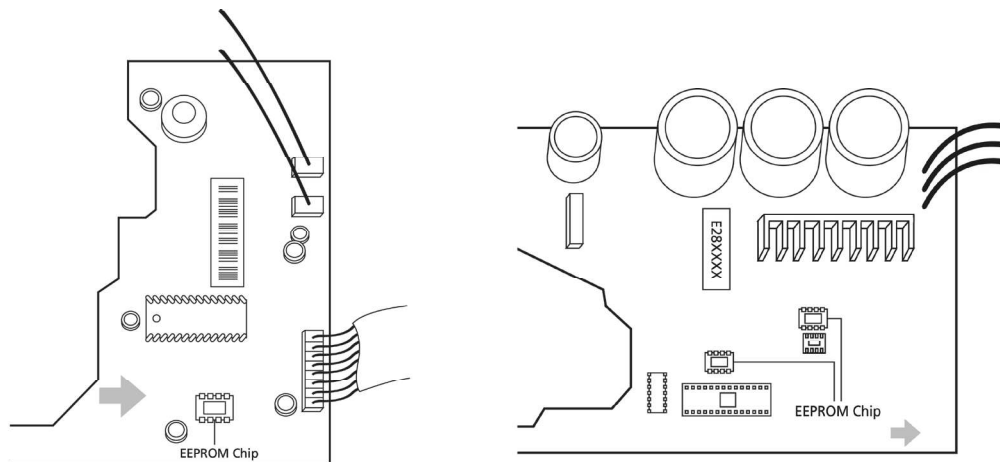
Troubleshooting and repair:



Remarks:

EEPROM: A read-only memory whose contents can be erased and reprogrammed using a pulsed voltage.

The location of the EEPROM chip on the indoor and outdoor PCB is shown in the following two images:



NOTES

- For certain models, outdoor PCB could not be removed separately. In this case, the outdoor electric control box should be replaced as a whole. This pictures are only for reference, actual appearance may vary.
- Troubleshooting and repair of compressor driven chip EEPROM parameter error and communication error between outdoor main chip and compressor driven chip are same as EC 51.

07.02. EL 01/E1 (Indoor and Outdoor Unit Communication Error Diagnosis and Solution)

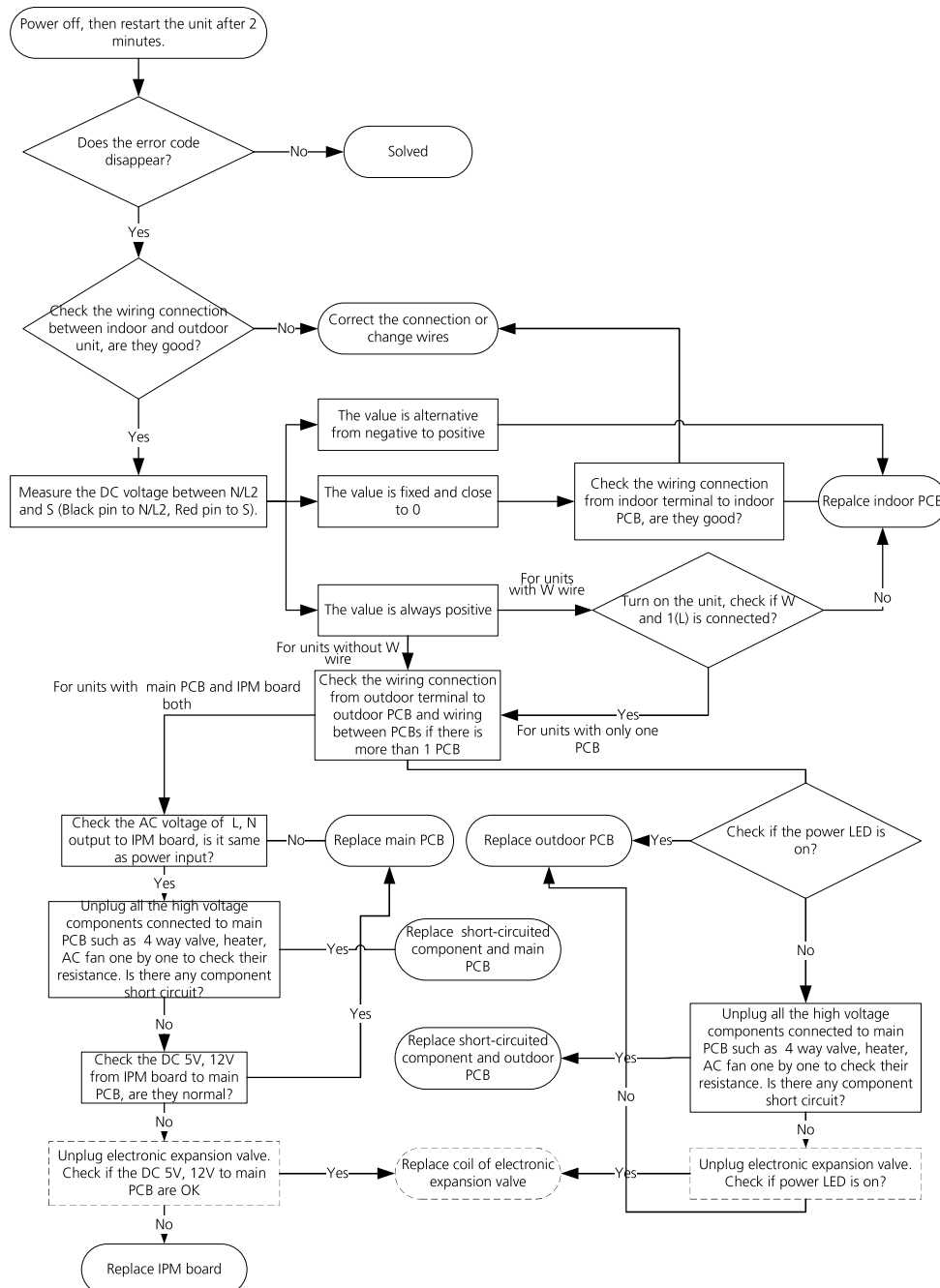
Description: Indoor unit can not communicate with outdoor unit

Recommended parts to prepare:

- Indoor PCB
- Outdoor PCB
- Reactor

Troubleshooting and repair:

S Communication:

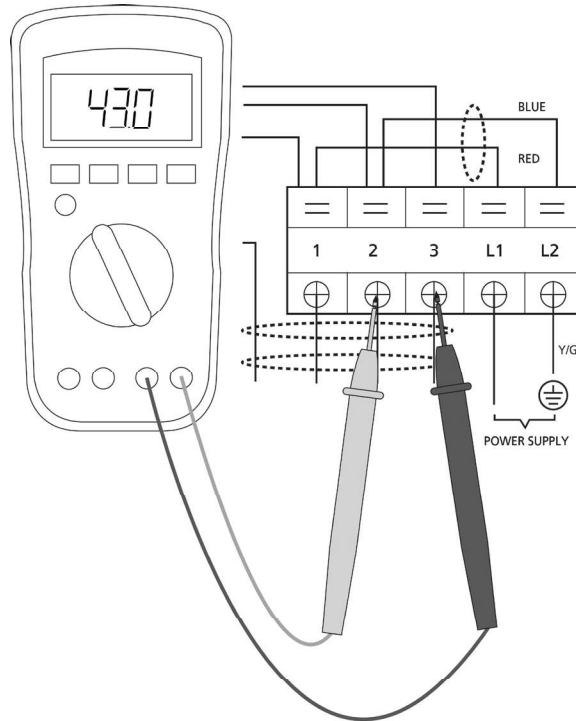


NOTES

For certain models, outdoor PCB could not be removed separately. In this case, the outdoor electric control box should be replaced as a whole.

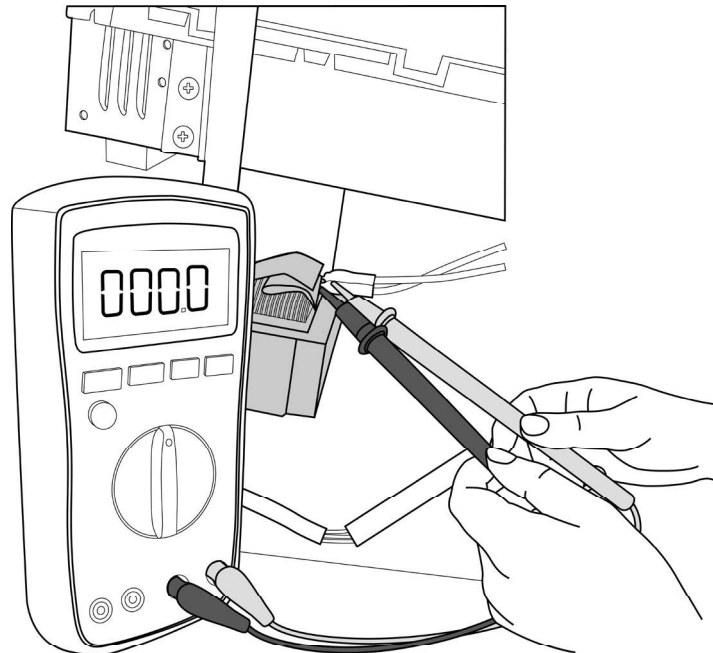
Remarks:

- Use a multimeter to test the DC voltage between 2 port(or S or L2 port) and 3 port(or N or S port) of outdoor unit. The red pin of multimeter connects with 2 port(or S or L2 port) while the black pin is for 3 port(or N or S port) .
- When AC is operating normally, the voltage is moving alternately as positive values and negative values
- If the outdoor unit has malfunction, the voltage has always been the positive value.
- While if the indoor unit has malfunction, the voltage has always been a certain value.



**S and N
or
L2 and S
or
2 and 3**

- Use a multimeter to test the resistance of the reactor which does not connect with capacitor.
- The normal value should be around zero ohm. Otherwise, the reactor must have malfunction.



NOTES

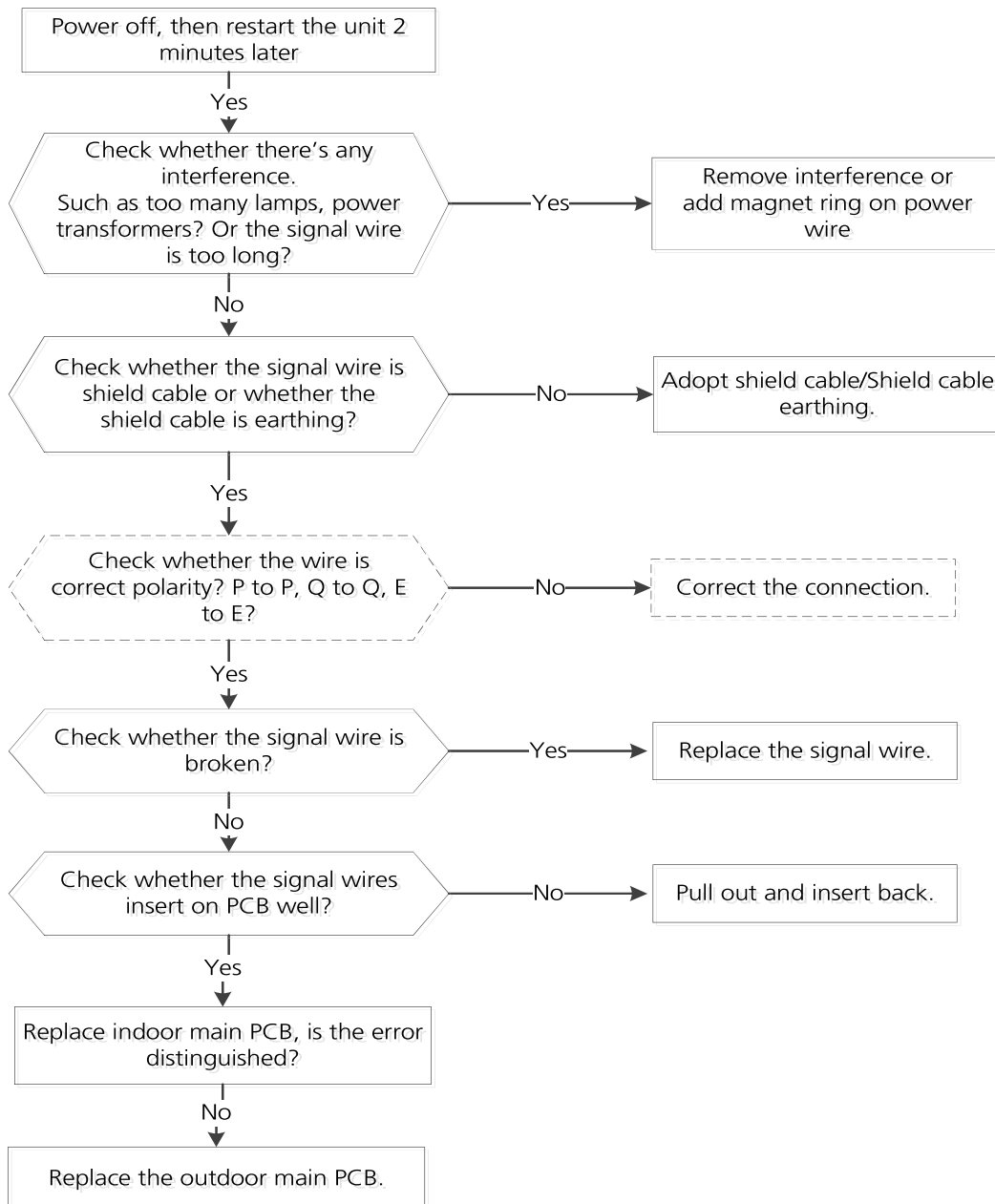
The picture and the value are only for reference, actual condition and specific value may vary.

485 Communication:

Recommended parts to prepare:

- Signal wires
- Magnet ring
- Indoor PCB
- Outdoor PCB

Troubleshooting and repair:



07.03. EH 03 / EC 07 / F5 / EC 71

EH 03 / EC 07 / F5 - Fan Speed Is Operating Outside of Normal Range Diagnosis and Solution

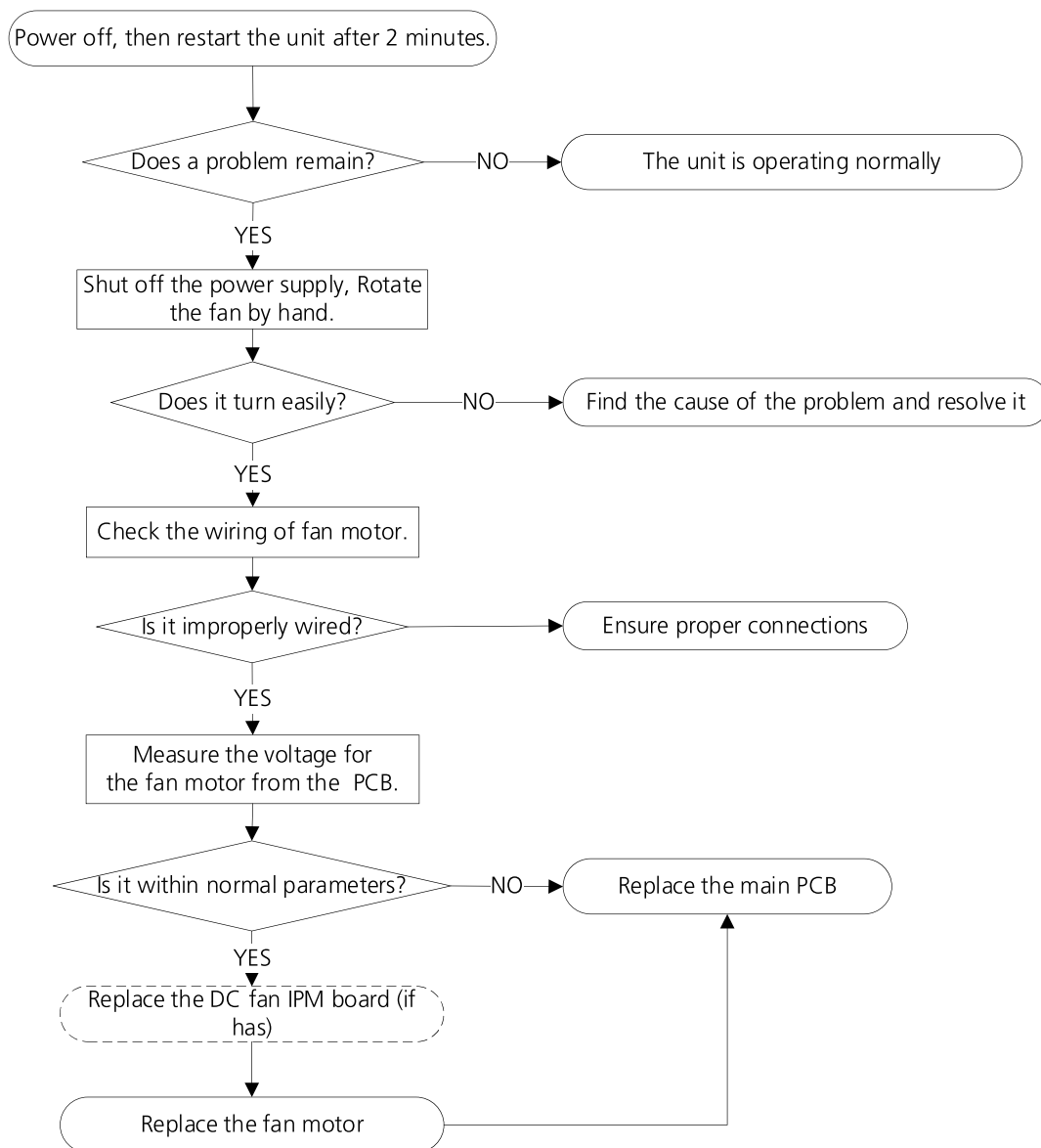
EC 71 - Over Current Failure of Outdoor DC Fan Motor

Description: When indoor / outdoor fan speed keeps too low or too high for a certain time, the unit ceases operation and the LED displays the failure.

Recommended parts to prepare:

- Connection wires
- Fan assembly
- Fan motor

Troubleshooting and repair:



NOTES

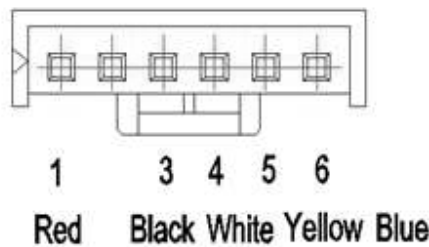
For certain models, outdoor PCB could not be removed separately. In this case, the outdoor electric control box should be replaced as a whole.

Index:

07.03.01. Indoor or Outdoor DC Fan Motor(control chip is in fan motor)

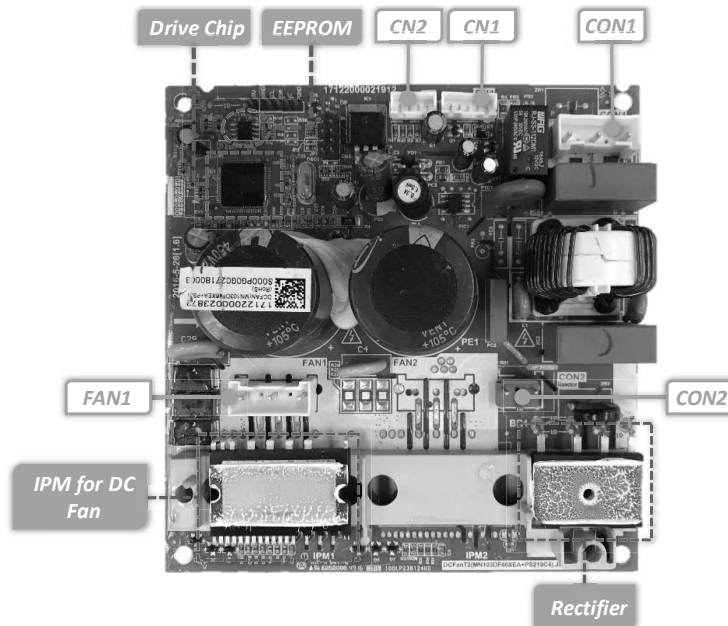
Power on and when the unit is in standby, measure the voltage of pin1-pin3, pin4-pin3 in fan motor connector. If the value of the voltage is not in the range showing in below table, the PCB must has problems and need to be replaced.

No.	Color	Signal	Voltage
1	Red	Vs/Vm	192V~380V
2	---	---	---
3	Black	GND	0V
4	White	Vcc	13.5-16.5V
5	Yellow	Vsp	0~6.5V
6	Blue	FG	13.5-16.5V



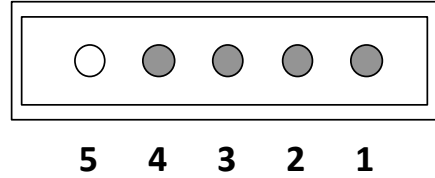
07.03.02. Indoor DC Fan IPM Board (Duct and Ceiling-floor Unit)

Power on and when the unit is in standby, measure the voltage of CON1, pin1-pin2 and pin3-pin2 of CN1 in DC motor driver board. If the value of the voltage is not in the range showing in below tables, the indoor main PCB must has problems and need to be replaced.



Port	Description	Parameter	Remark
CON1	Power input for the PCB	230V/AC	
CN1	Communication with main PCB	DC	
CN2	Test port	5V/DC	For debugging board
CN23	UVW output for DC fan motor		
CON2	Ports for reactor		

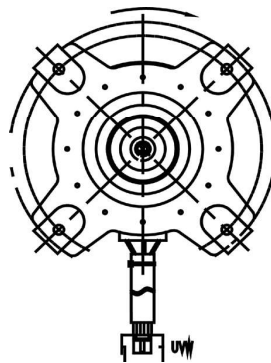
CN1 Communication with main PCB



NO.	Signal	Voltage
1	Vcc	+15V
2	GND	
3	TXD	0~6V
4	RXD	0~15V
5	--	--

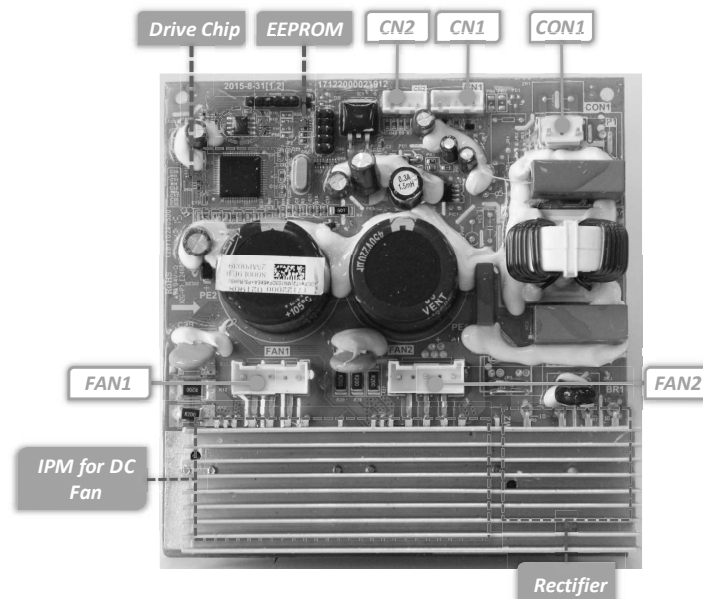
07.03.03. Outdoor DC Fan Motor (control chip is in outdoor PCB)

Release the UVW connector. Measure the resistance of U-V, U-W, V-W. If the resistance is not equal to each other, the fan motor must have problems and need to be replaced. Otherwise the PCB must have problems and need to be replaced.



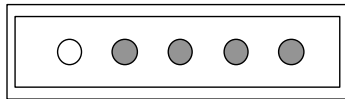
07.03.04. Outdoor DC Fan IPM Board (for some double fan models)

Power on and when the unit is in standby, measure the voltage of CON1, pin1-pin2 and pin3-pin2 of CN1 in DC motor driver board. If the value of the voltage is not in the range showing in below tables, the outdoor main PCB must have problems and need to be replaced.



Part	Description	Parameter	Remark
CON1	Power input for the PCB	192-380V/DC	
CN1	Communication with main PCB	DC	
CN2	Test port	5V/DC	For debugging board
FAN1	UVW output for DC fan motor		
FAN2	UVW output for DC fan motor		

CN1 Communication with main PCB



5 4 3 2 1

No.	Signal	Voltage
1	Vcc	13.5-16.5V
2	GND	0V
3	Vsp	0~6.5V
4	FG	13.5-16.5V
5	---	---

07.04. EH 60 / EH 61 / EC 53 / EC 52 / EC 54 / EC 56 / EC 50 / F1 / F2 / F3 / P7

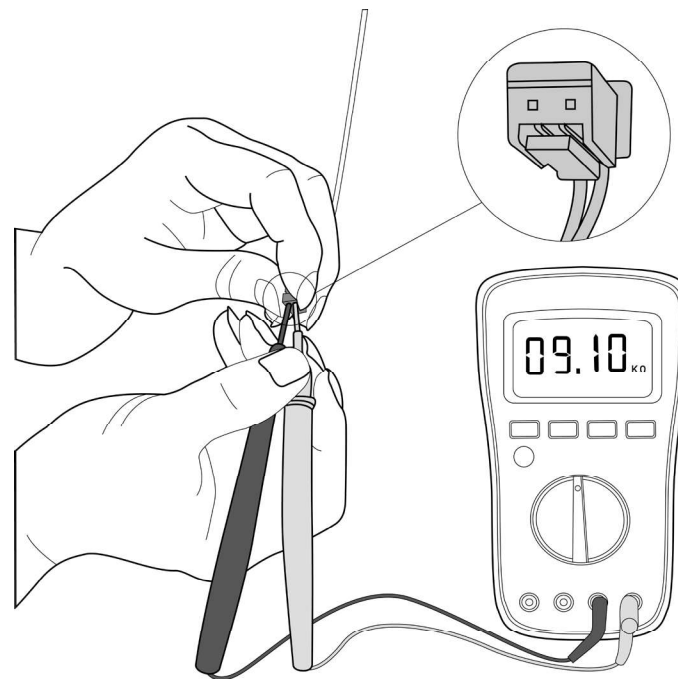
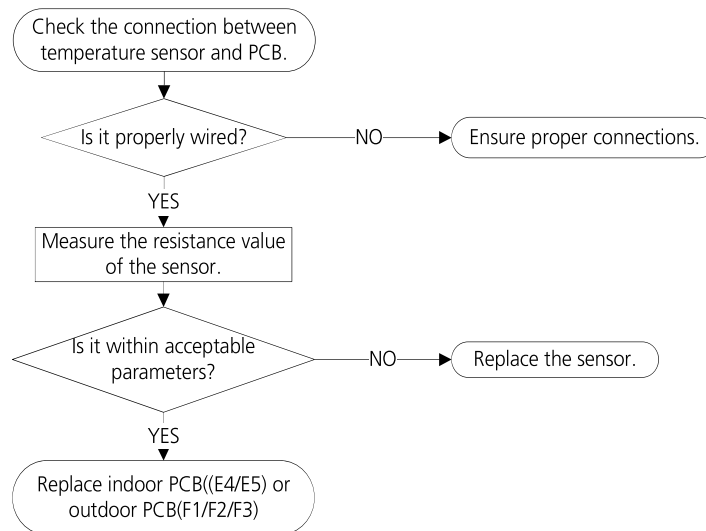
EH 60 / EH 61 / EC 53 / EC 52 / EC 54 / EC 56 / EC 50 / F1 / F2 / F3 / P7 - Open Circuit or Short Circuit of Temperature Sensor Diagnosis and Solution

Description: If the sampling voltage is lower than 0.06V or higher than 4.94V, the LED displays the failure.

Recommended parts to prepare:

- Connection wires
- Sensors
- PCB

Troubleshooting and repair:



NOTES

For certain models, outdoor PCB could not be removed separately. In this case, the outdoor electric control box should be replaced as a whole. This picture and the value are only for reference, actual appearance and value may vary

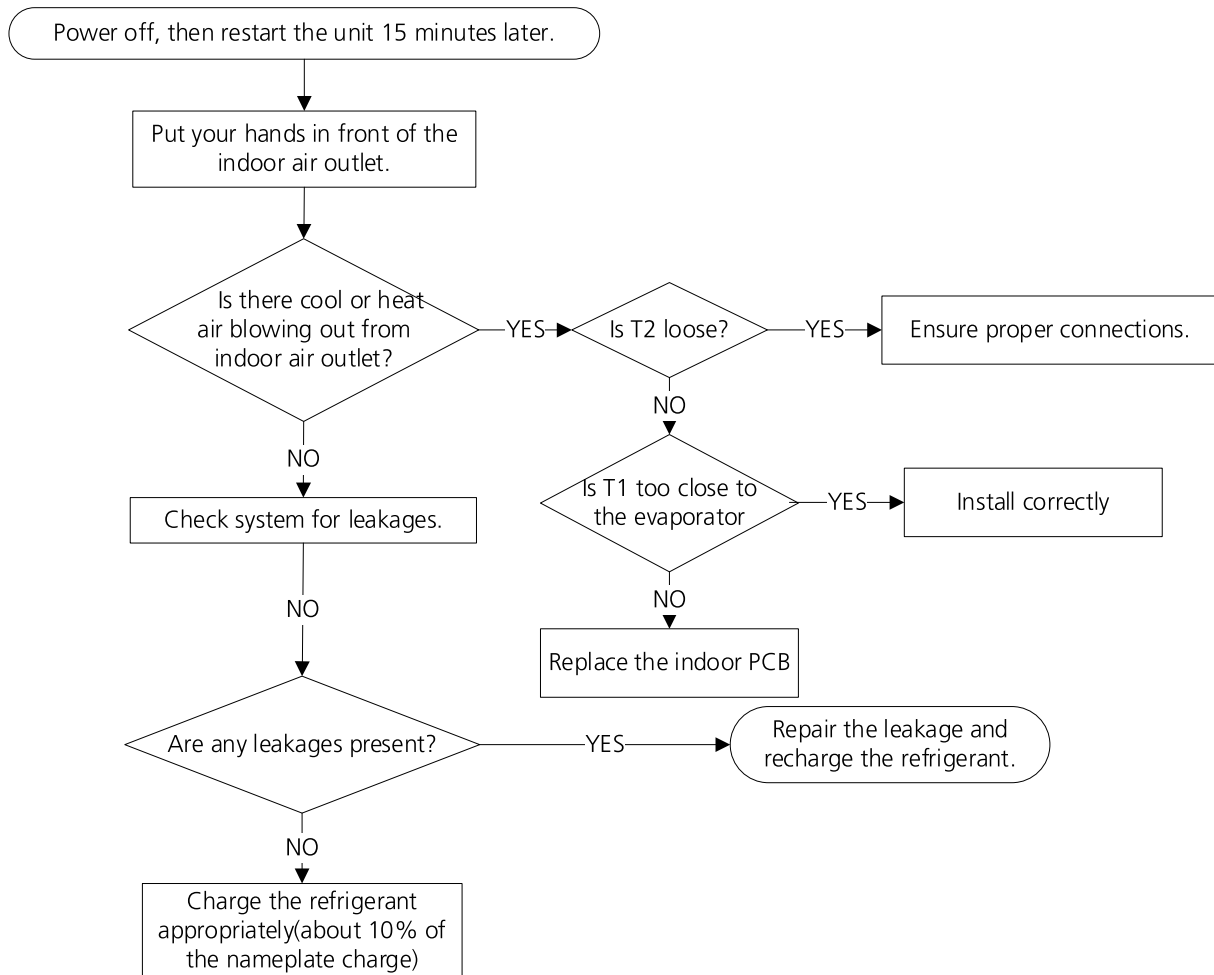
07.05. EL 0C (Refrigerant Leakage Detection Diagnosis and Solution)

Description: Judging the abnormality of the refrigeration system according to the number of compressor stops and the changes in operating parameters caused by excessive exhaust temperature.

Recommended parts to prepare:

- Indoor PCB
- Additional refrigerant

Troubleshooting and repair:



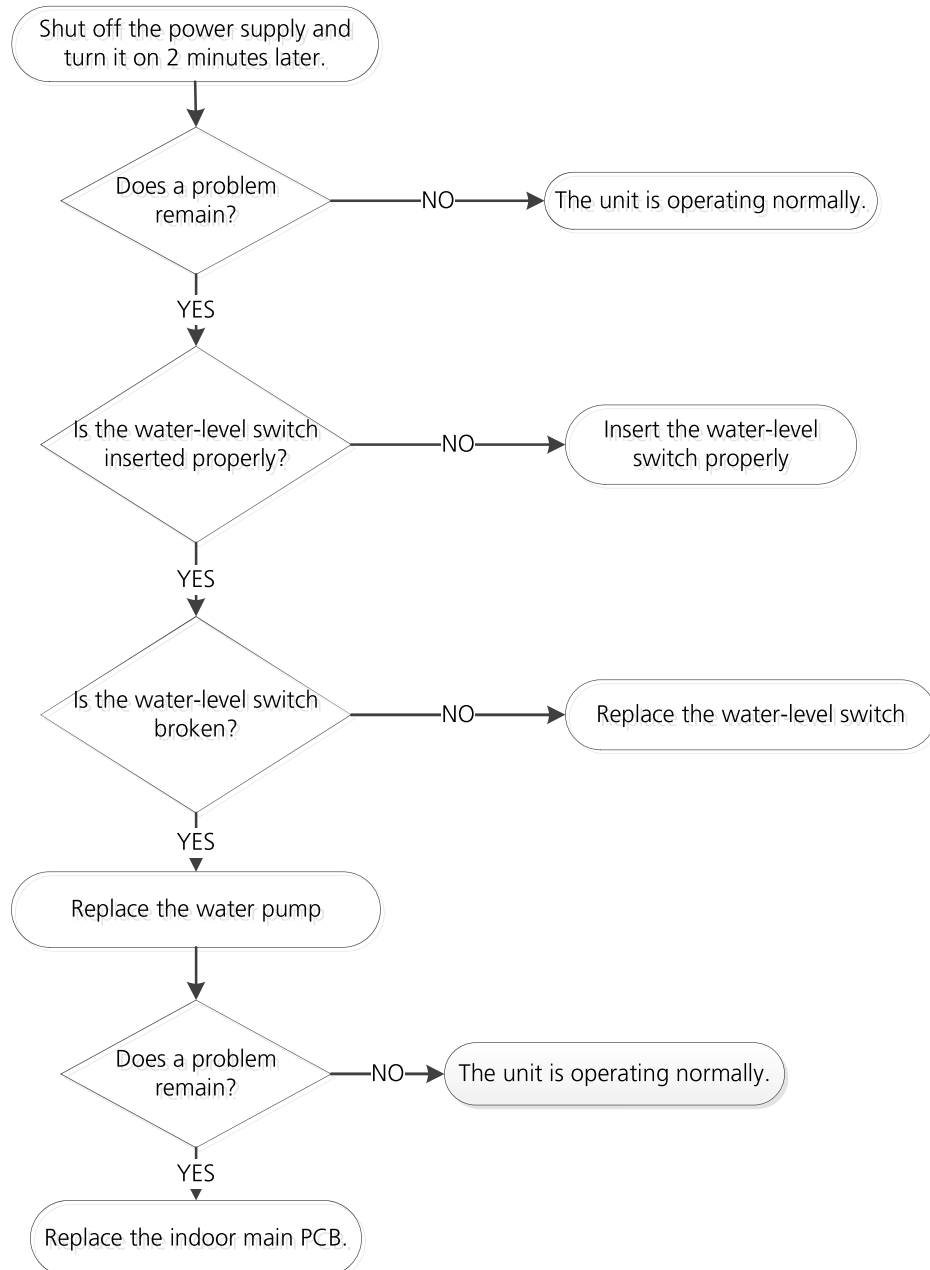
07.06. EH 0E(Water-Level Alarm Malfunction Diagnosis and Solution)

Description: If the sampling voltage is not 5V, the LED displays the failure code.

Recommended parts to prepare:

- Connection wires
- Water-level switch
- Water pump
- Indoor PCB

Troubleshooting and repair:



07.07. PC 00 / P0 / PC 04 / P4

PC 00/P0 - IPM malfunction or IGBT over-strong current protection,

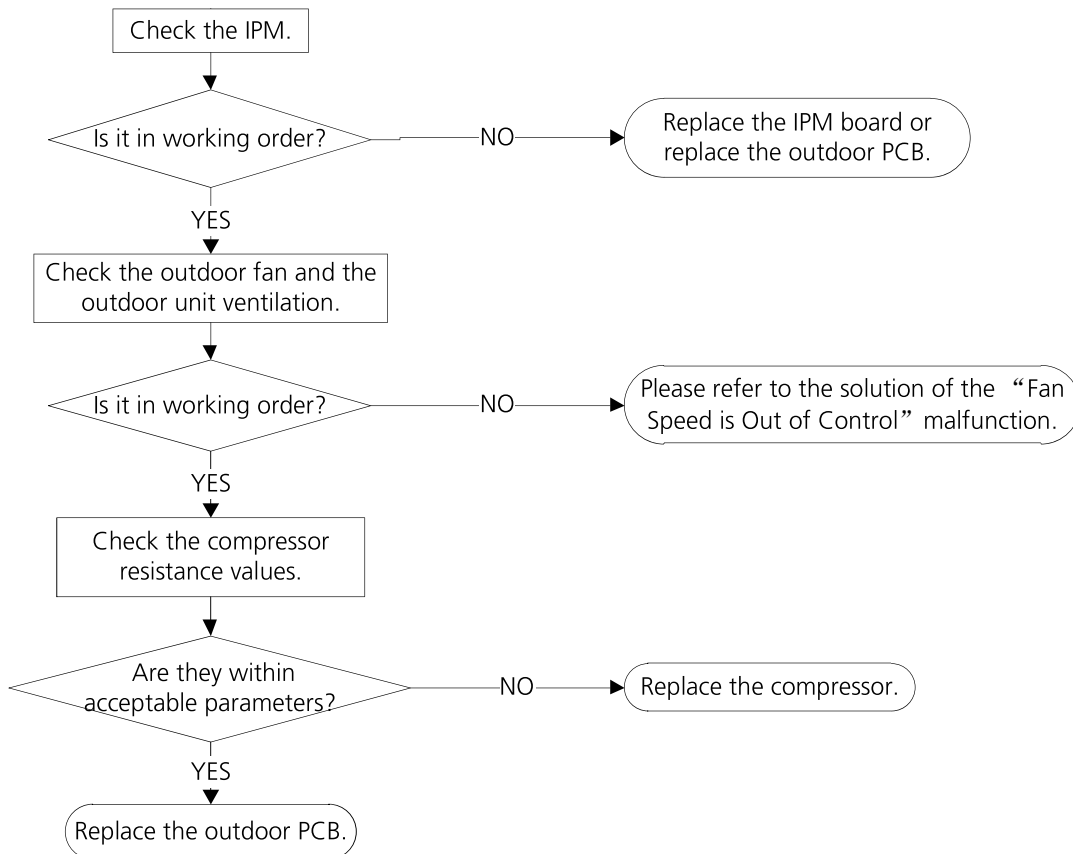
PC 04/P4 - Inverter compressor drive error Diagnosis and Solution

Description: When the voltage signal the IPM sends to the compressor drive chip is abnormal, the display LED shows error code and the AC turn off. Or an abnormal inverter compressor drive is detected by a special detection circuit, including communication signal detection, voltage detection, compressor rotation speed signal detection and so on.

Recommended parts to prepare:

- Connection wires
- IPM module board
- Outdoor fan assembly
- Compressor
- Outdoor PCB

Troubleshooting and repair:



NOTES

For certain models, outdoor PCB could not be removed separately. In this case, the outdoor electric control box should be replaced as a whole.

07.08. PC 01 / P1 / PC10 / PC11 / PC12

PC 01 / P1 - Over voltage or too low voltage protection,

PC 10 - Outdoor unit low AC voltage protection,

PC 11 - Outdoor unit main control board DC bus high voltage protection,

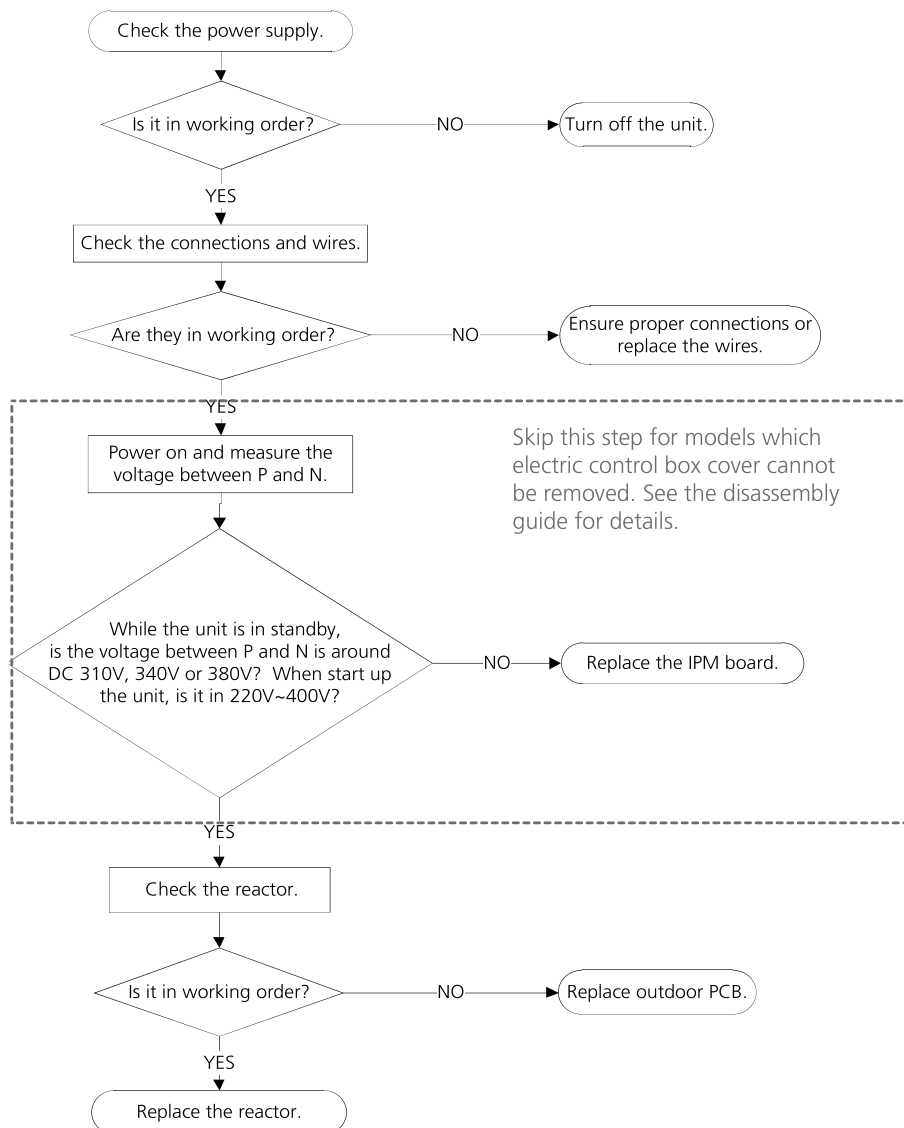
PC 12 - Outdoor unit main control board DC bus high voltage protection / 341 MCE error) - Diagnosis and Solution

Description: Abnormal increases or decreases in voltage are detected by checking the specified voltage detection circuit.

Recommended parts to prepare:

- Power supply wires
- IPM module board
- PCB
- Reactor

Troubleshooting and repair:



NOTES

For certain models, outdoor PCB could not be removed separately. In this case, the outdoor electric control box should be replaced as a whole.

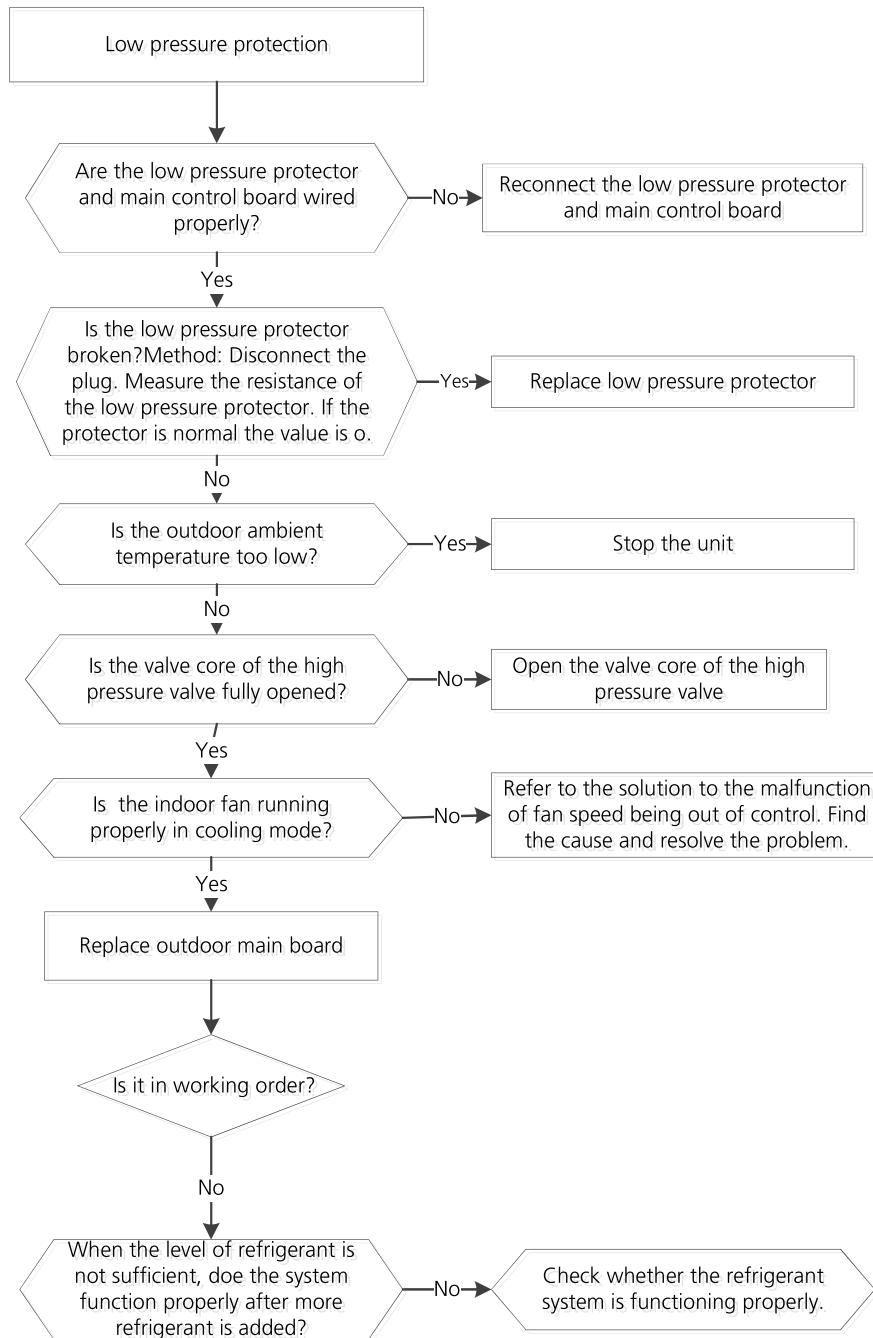
07.09. PC 03 / PC 31 / J6 (Low Pressure Protection Diagnosis and Solution)

Description: If the sampling voltage is not 5V, the LED displays a failure code.

Recommended parts to prepare:

- Connection wires
- Low pressure protector
- Indoor fan assembly
- Outdoor PCB

Troubleshooting and repair:



NOTES

For certain models, outdoor PCB could not be removed separately. In this case, the outdoor electric control box should be replaced as a whole.

07.10. PC 02 / P2

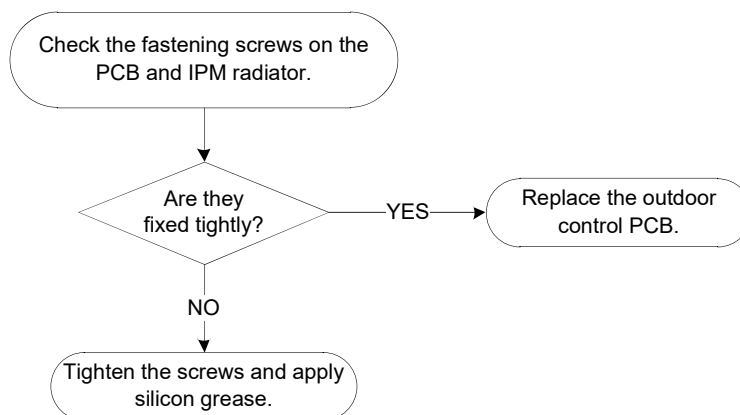
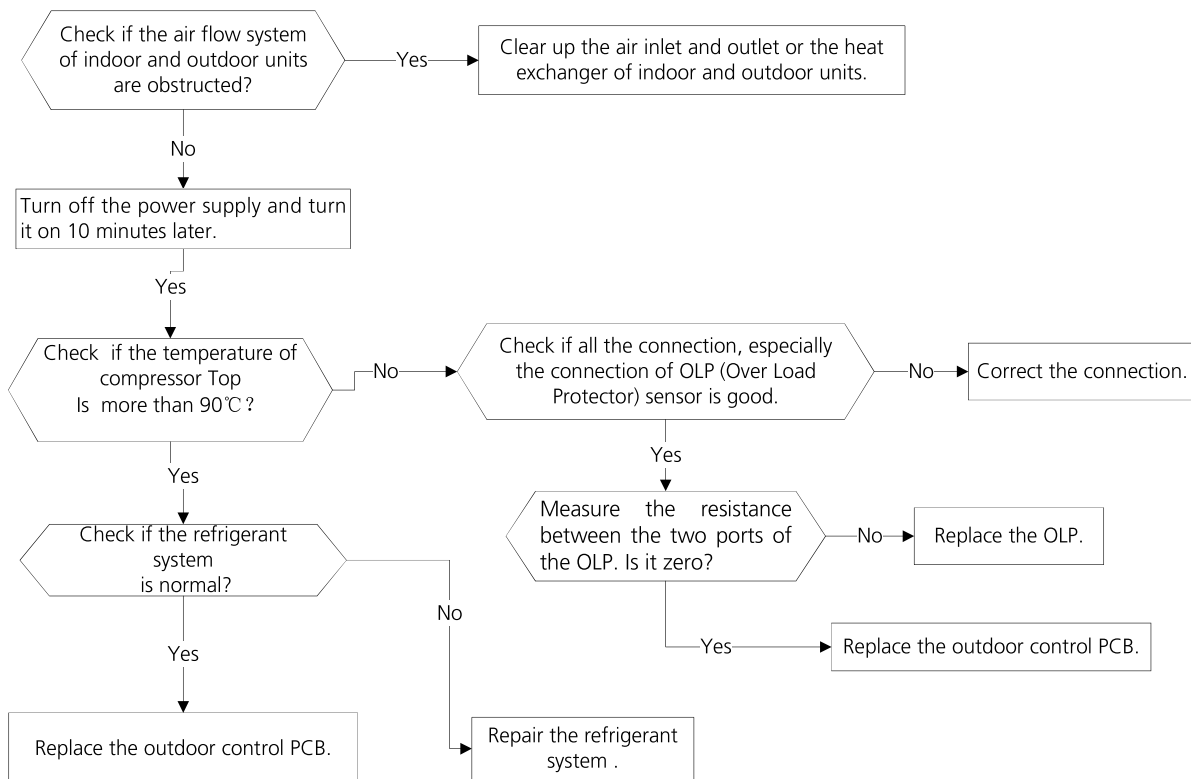
PC 02/P2 - Top temperature protection of compressor or High temperature protection of IPM module diagnosis and solution

Description: For some models with overload protection, If the sampling voltage is not 5V, the LED will display the failure. If the temperature of IPM module is higher than a certain value, the LED displays the failure code.

Recommended parts to prepare:

- Connection wires
- Outdoor PCB
- IPM module board
- High pressure protector
- System blockages

Troubleshooting and repair:



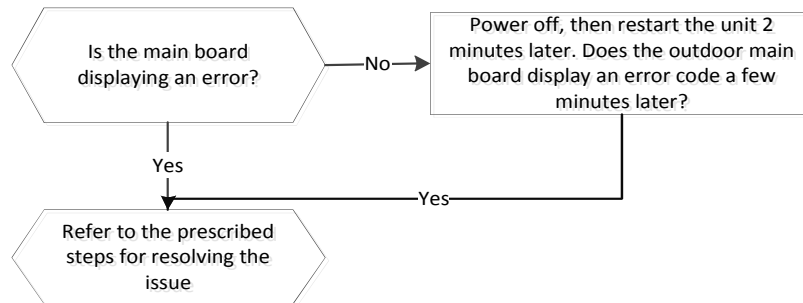
07.11. EC 0d (Outdoor unit malfunction Diagnosis and Solution)

Description: The indoor unit detect the outdoor unit is error.

Recommended parts to prepare:

- Outdoor unit

Troubleshooting and repair:



07.12. PC 40 / J4

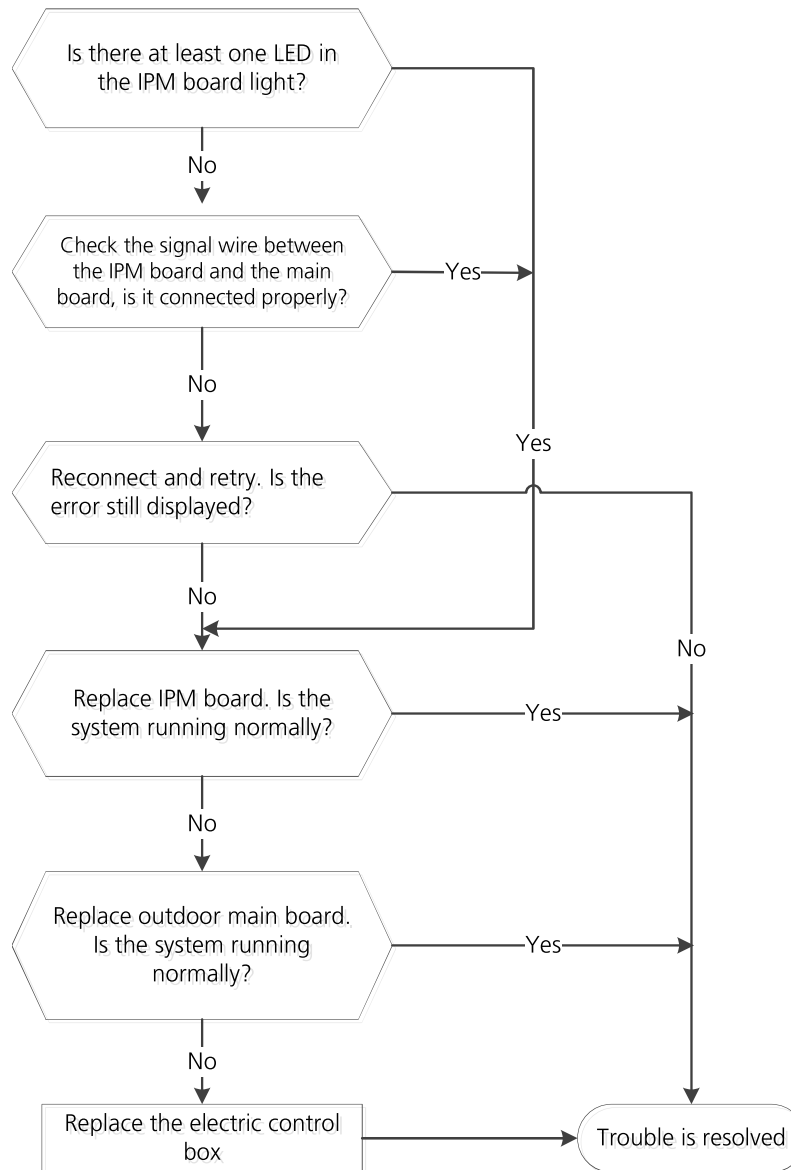
PC 40 / J4 (Communication error between outdoor main PCB and IPM board diagnosis and solution)

Description: The main PCB cannot detect the IPM board.

Recommended parts to prepare:

- Connection wires
- IPM board
- Outdoor main PCB
- Electric control box

Troubleshooting and repair:



07.13. PC 08 / F0 / PC 46 / PC 49

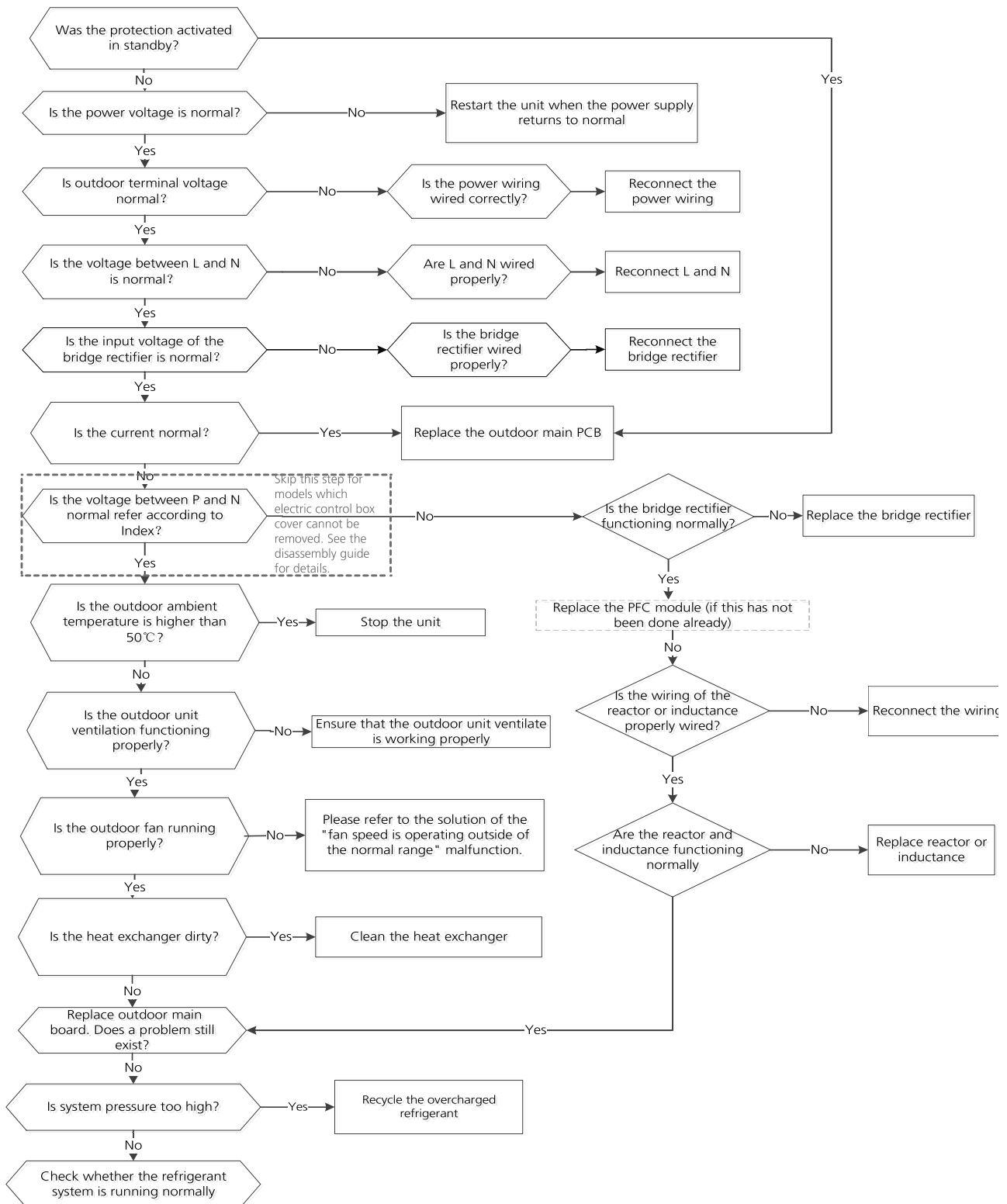
PC 08/F0 - Current overload protection, PC 44 - Outdoor unit zero speed protection, PC 46 - Compressor speed has been out of control, PC 49 - Compressor overcurrent failure- diagnosis and solution

Description: An abnormal current rise is detected by checking the specified current detection circuit.

Recommended parts to prepare:

- Connection wires
- Rectifier
- PFC circuit or reactor
- Blocked refrigeration piping system
- Pressure switch
- Outdoor fan
- IPM module board
- Outdoor PCB

Troubleshooting and repair:



NOTES

For certain models, outdoor PCB could not be removed separately. In this case, the outdoor electric control box should be replaced as a whole.

07.14. PC OF / J3(PFC module protection diagnosis and solution)

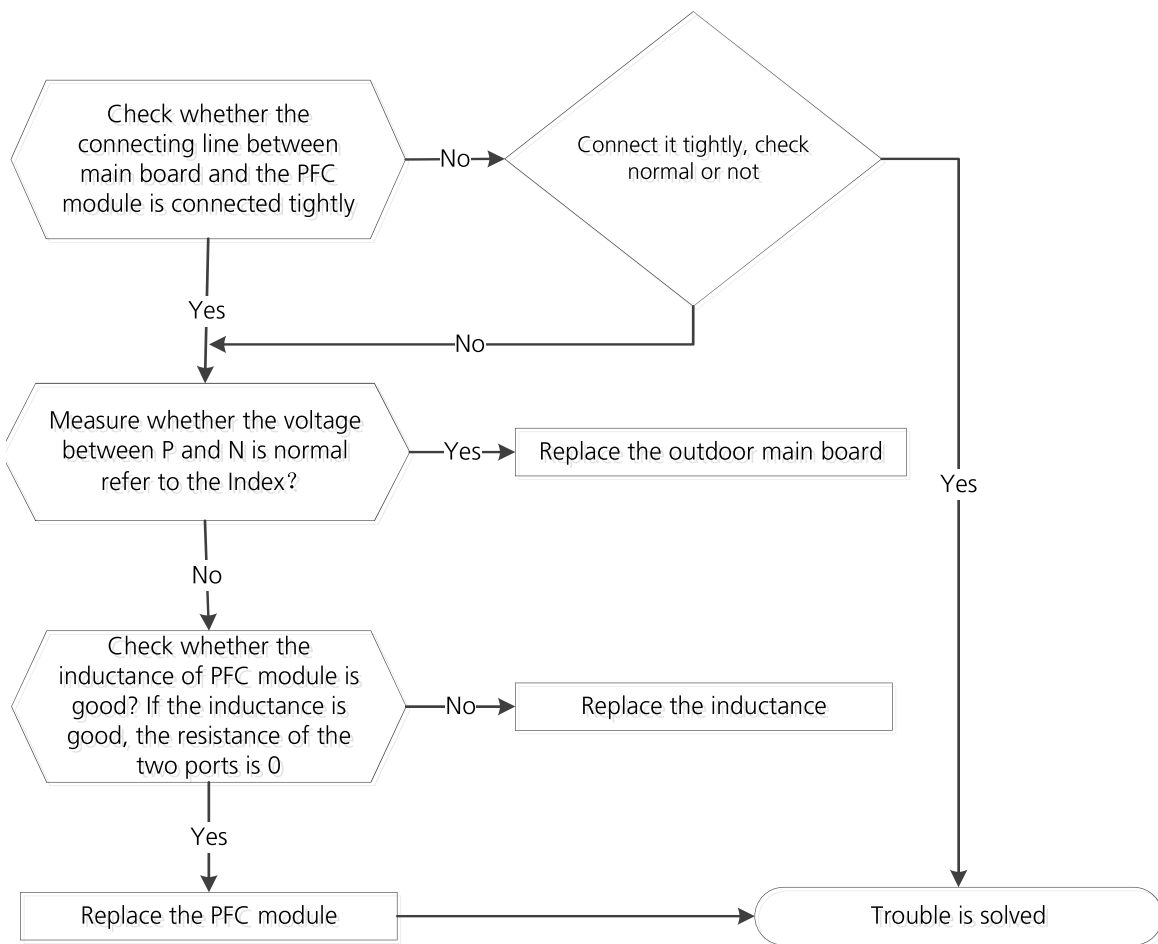
Description: When the voltage signal that IPM send to compressor drive chip is abnormal, the LED displays the failure code and the AC turns off.

Recommended parts to prepare:

- Connection wires
- Inductance
- Outdoor main PCB
- PFC module

Troubleshooting and repair:

At first test the resistance between every two ports of U, V, W of IPM and P, N. If any result of them is 0 or close to 0, the IPM is defective. Otherwise, please follow the procedure below:



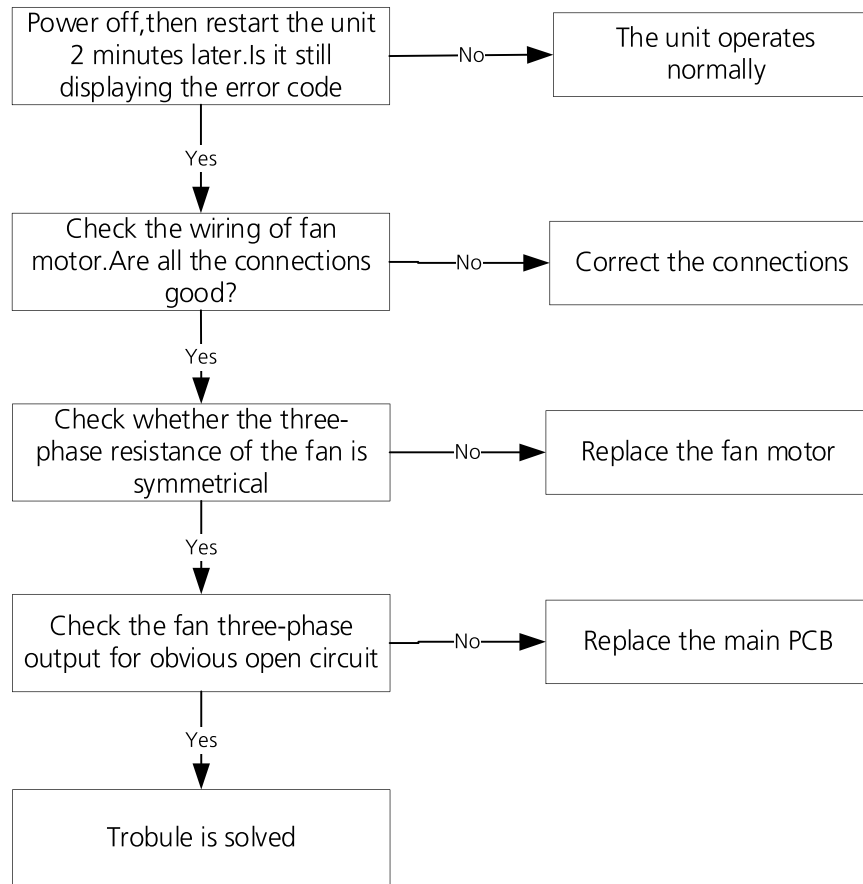
07.15. EC 72 (Lack phase failure of outdoor DC fan motor diagnosis and solution)

Description: When the three-phase sampling current of the DC motor is abnormal, especially when the current of one or more phases is always small and almost 0, the LED displays the failure code.

Recommended parts to prepare:

- Connection wire
- Fan motor
- Outdoor PCB

Troubleshooting and repair:



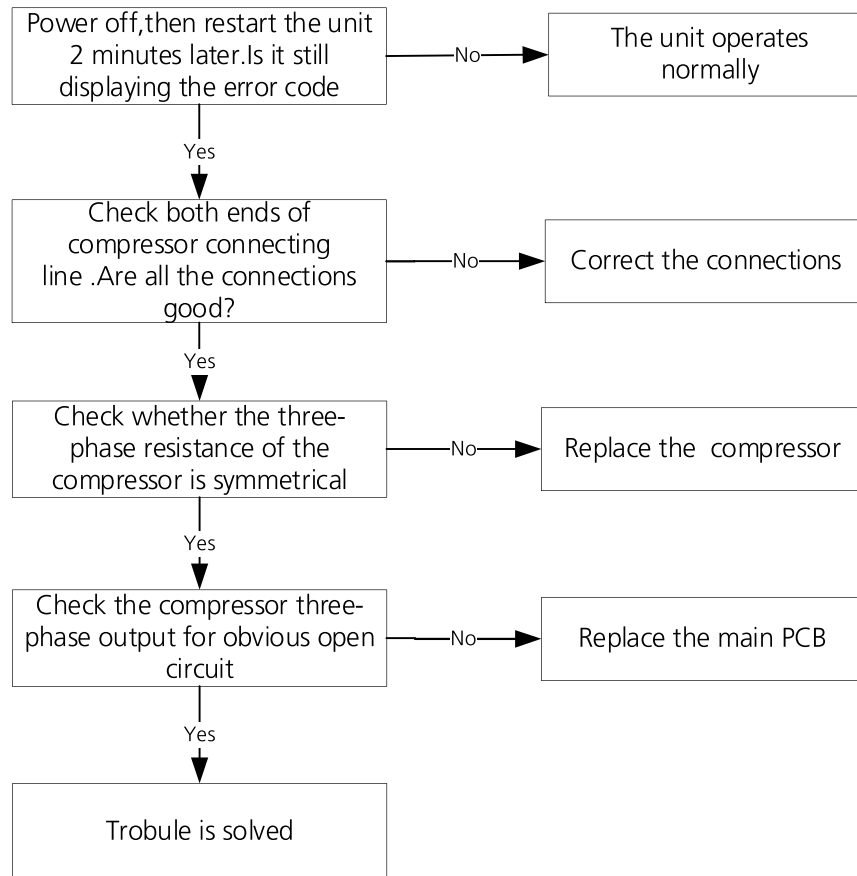
07.16. PC 43 (Outdoor compressor lack phase protection diagnosis and solution)

Description: When the three-phase sampling current of the compressor is abnormal, especially when the current of one or more phases is always small and almost 0, the LED displays the failure code.

Recommended parts to prepare:

- Connection wire
- Compressor
- Outdoor PCB

Troubleshooting and repair:



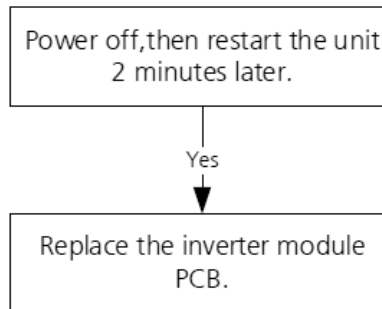
07.17. PC 45 (Outdoor unit IR chip drive failure diagnosis and solution)

Description: When the IR chip detects its own parameter error, the LED displays the failure code when power on.

Recommended parts to prepare:

- Inverter module PCB

Troubleshooting and repair:



07.18. PC 0L/LP (Low ambient temperature protection)

Description: It is a protection function. When compressor is off, outdoor ambient temperature(T4) is lower than -35oC. for 10s, the AC will stop and display the failure code.

When compressor is on, outdoor ambient temperature(T4) is lower than -40oC.for 10s, the AC will stop and display the failure code.

When outdoor ambient temperature(T4) is no lower than -32oC.for 10s, the unit will exit protection..

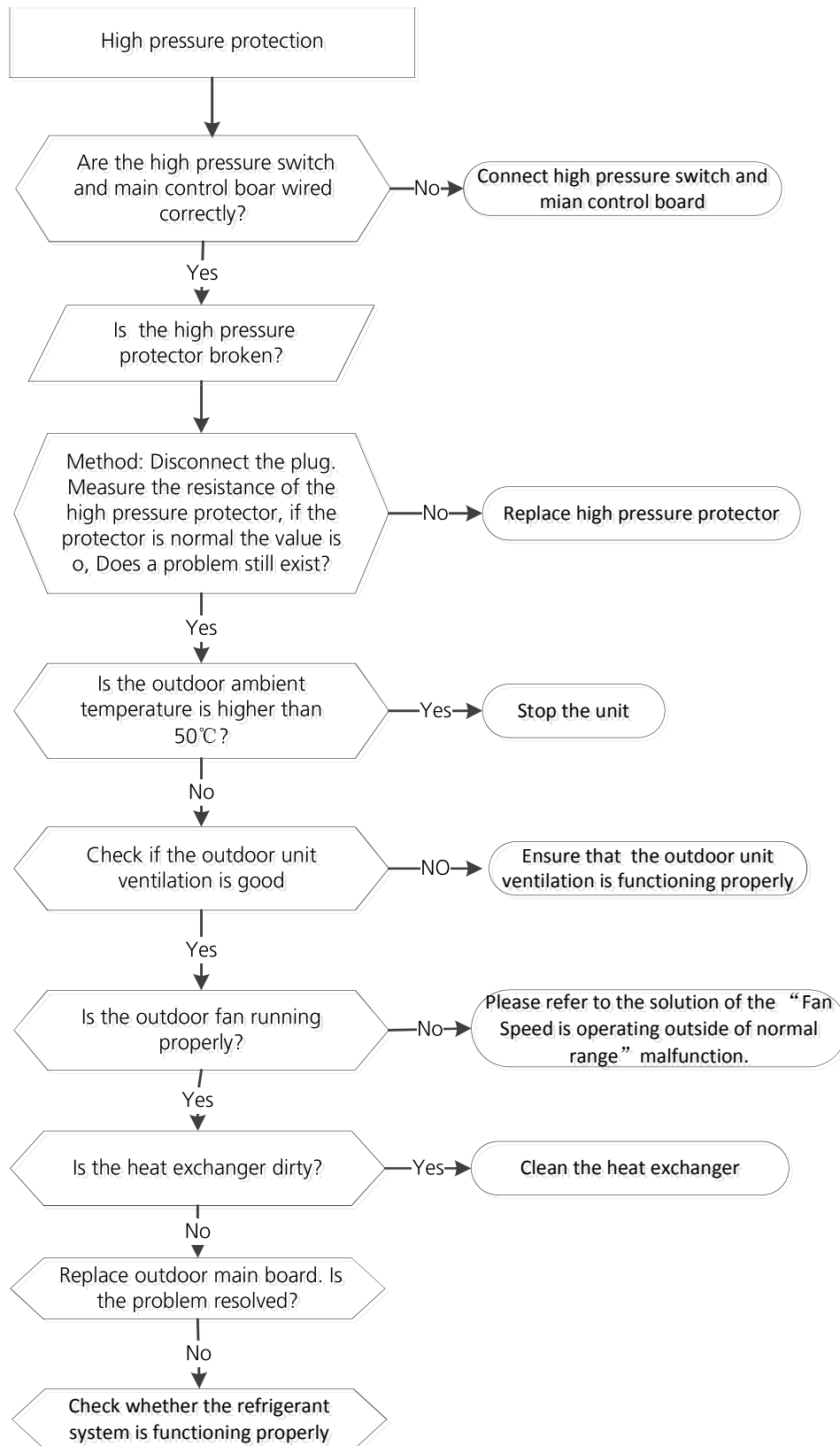
07.19. PC 30/J5 (High pressure protection diagnosis and solution)

Description: Outdoor pressure switch cut off the system because high pressure is higher than 4.4 MPa.

Recommended parts to prepare:

- Connection wires
- Pressure switch
- Outdoor fan
- Outdoor main PCB

Troubleshooting and repair:



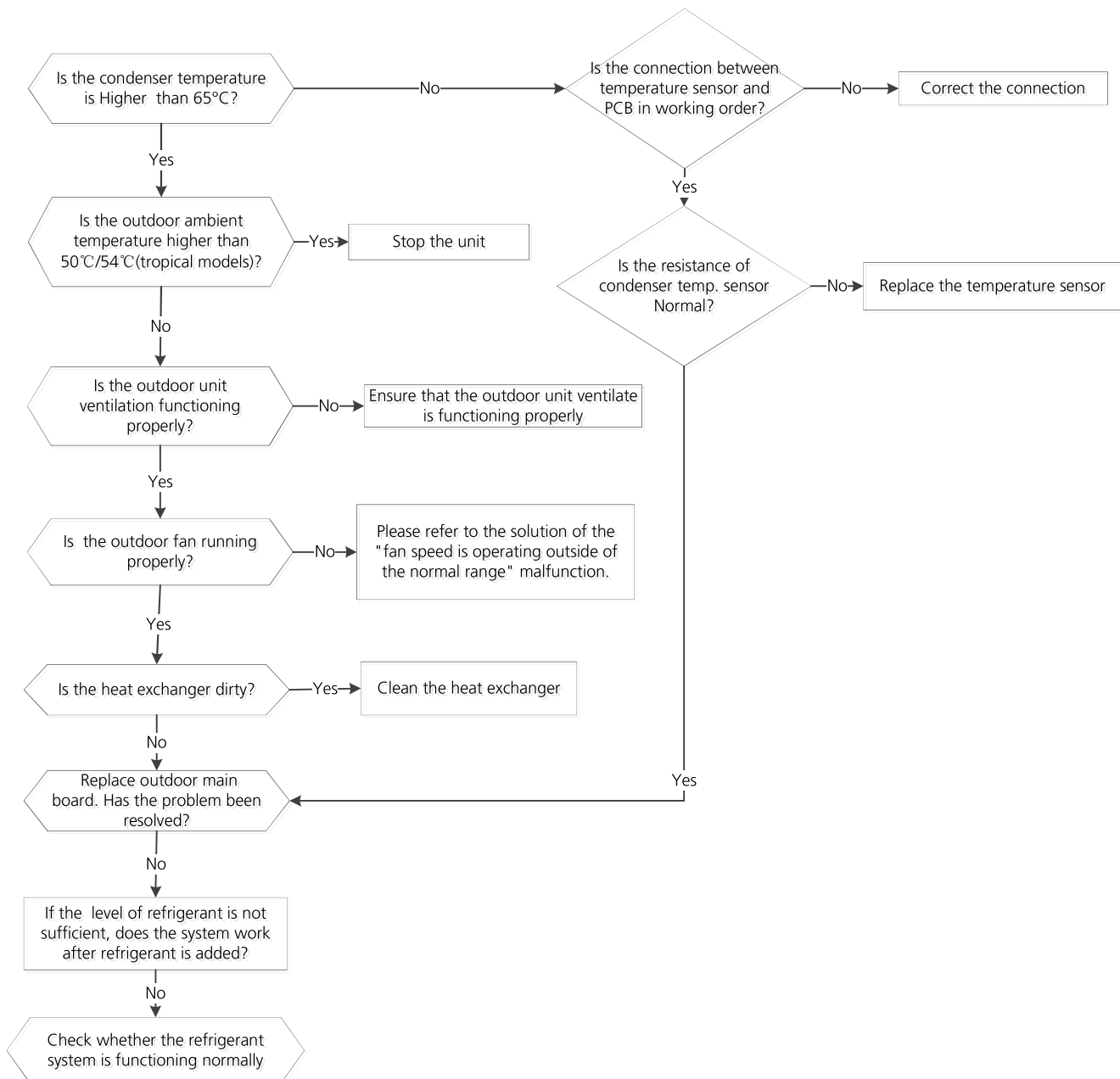
07.20. PC 0A/J1 (High temperature protection of condenser diagnosis and solution)

Description: When the outdoor pipe temperature is more than 65°C, the unit stops. It starts again only when the outdoor pipe temperature is less than 52°C.

Recommended parts to prepare:

- Connection wires
- Condenser temperature sensor
- Outdoor fan
- Outdoor main PCB
- Refrigerant

Troubleshooting and repair:



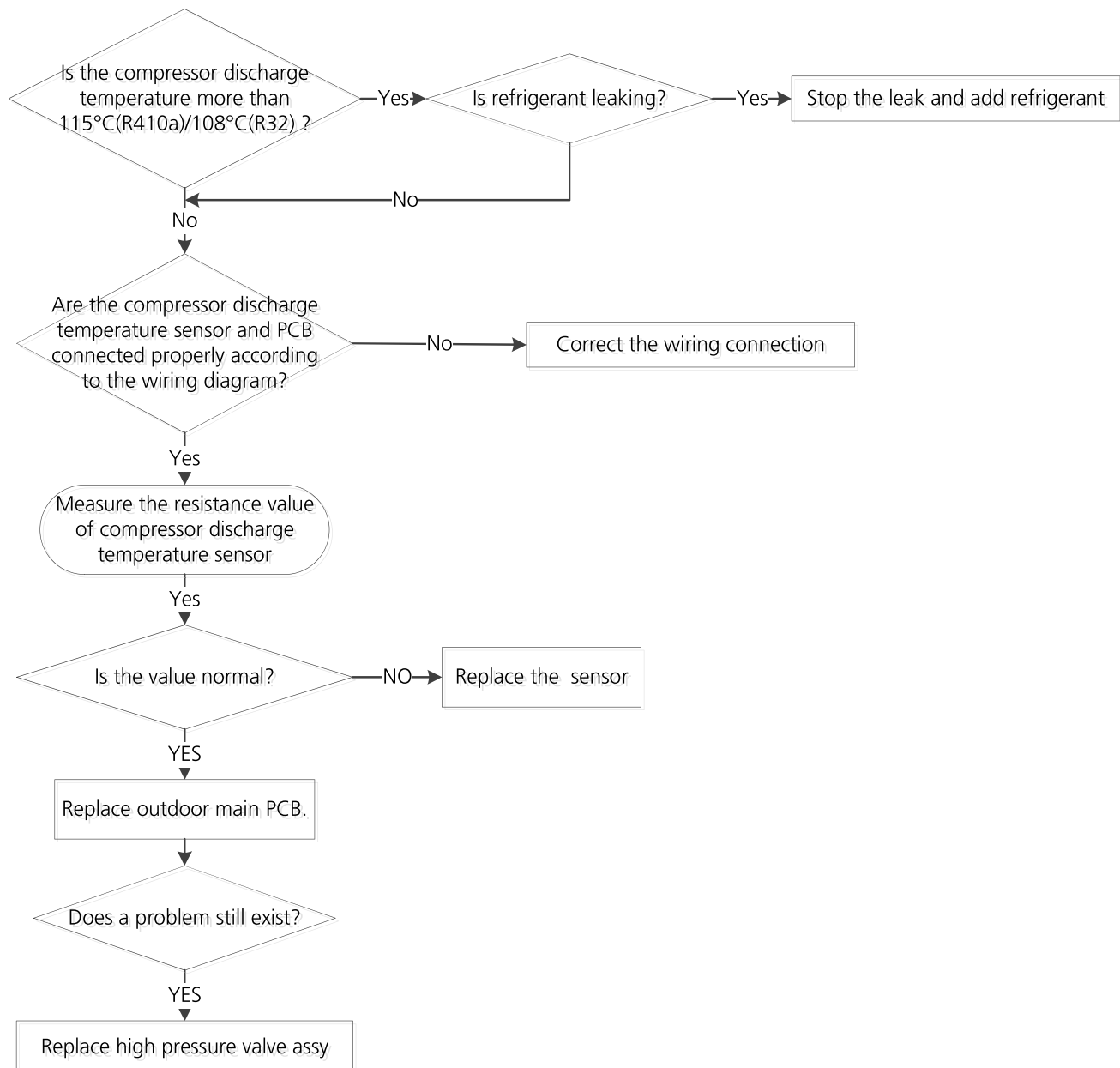
07.21. PC 06/J2 (Discharge temperature protection of compressor diagnosis and solution)

Description: If the compressor discharge temperature exceeds a certain level for nine seconds, the compressor ceases operation, the LED displays the failure code.

Recommended parts to prepare:

- Connection wires
- Discharge temperature sensor
- Additional refrigerant
- Outdoor main PCB

Troubleshooting and repair:



NOTES

For certain models, outdoor unit uses combination sensor, T3,T4 and TP are the same of sensor. This picture and the value are only for reference, actual appearance and value may vary.

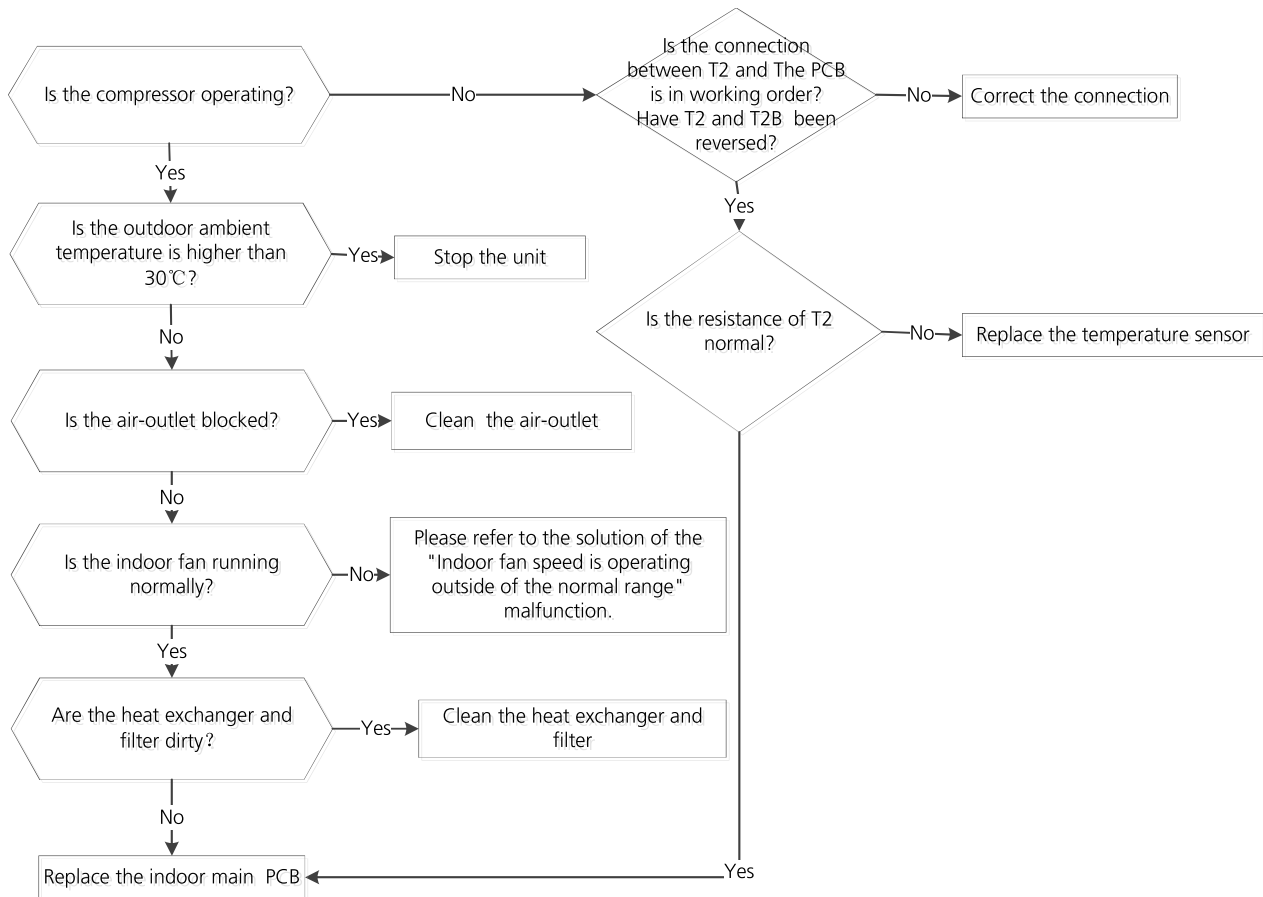
07.22. J0 (High temperature protection of evaporator diagnosis and solution)

Description: When evaporator coil temperature is more than 60°C, the unit stops. It starts again only when the evaporator coil temperature is less than 54°C.

Recommended parts to prepare:

- Connection wires
- Evaporator coil temperature sensor (T2)
- Indoor fan
- Indoor main PCB

Troubleshooting and repair:



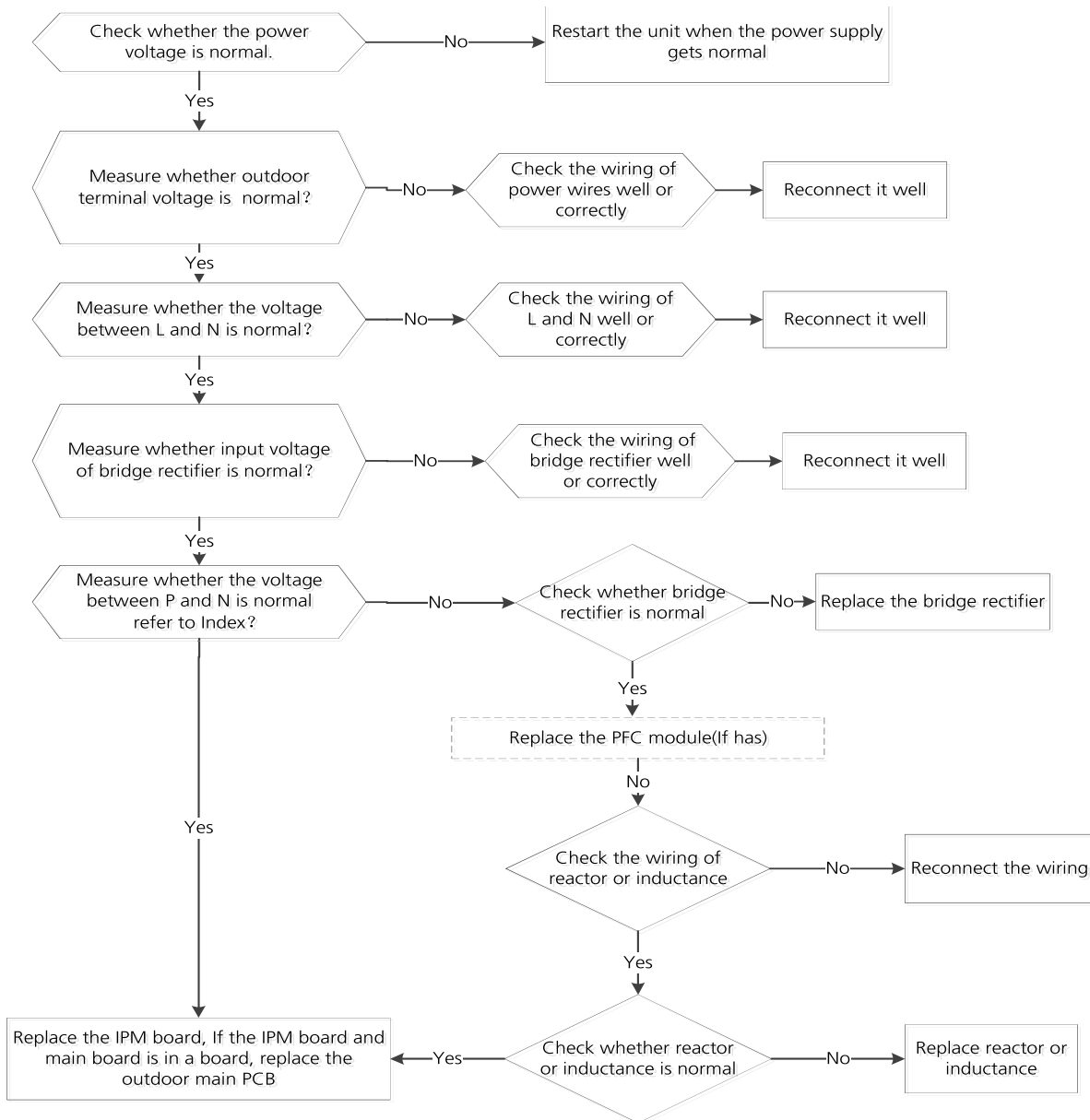
07.23. J8 (AC power input voltage protection diagnosis and solution)

Description: An abnormal voltage rise or drop is detected by checking the specified voltage detection circuit.

Recommended parts to prepare:

- Connection wires
- Inductance or reactor
- Bridge rectifier
- IPM module board
- Outdoor main PCB

Troubleshooting and repair:



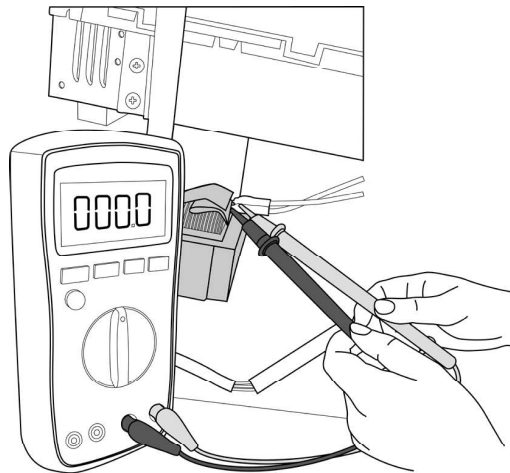
Index:

07.23.01. Normal voltage of P and N

208-240V(1-phase,3-phase)		380-415V(3-phase)	
In standby			
around 310VDC		around 530VDC	
In operation			
With passive PFC module	With partial active PFC module	With fully active PFC module	/
>200VDC	>310VDC	>370VDC	>450VDC

07.23.02. Reactor Check

Measure the resistance and voltage (to ground) of the reactor. The normal resistance should be around 0.1 ohm. Otherwise, the reactor must have malfunction.



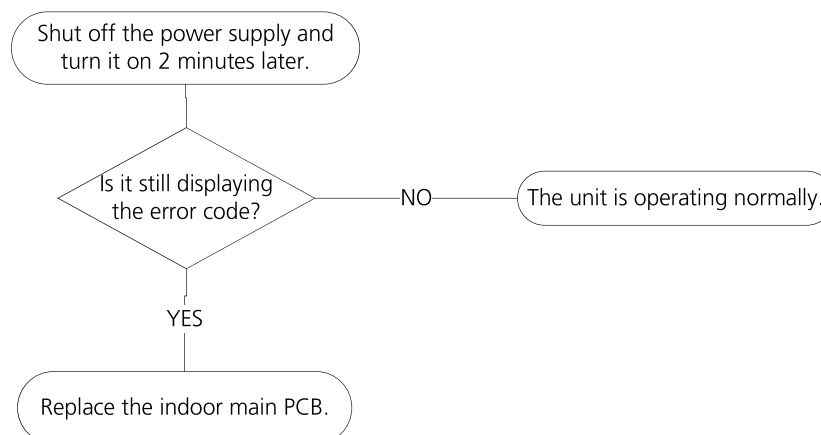
07.24. EH 0b(Communication error between indoor two chips diagnosis and solution)

Description: Indoor PCB main chip does not receive feedback from another chip.

Recommended parts to prepare:

- Indoor PCB

Troubleshooting and repair:



07.25. EH bA / EH 3A / EH 3b

EH bA - Communication malfunction between external fan module and indoor unit,

EH 3A - External fan DC bus voltage is too low protection),

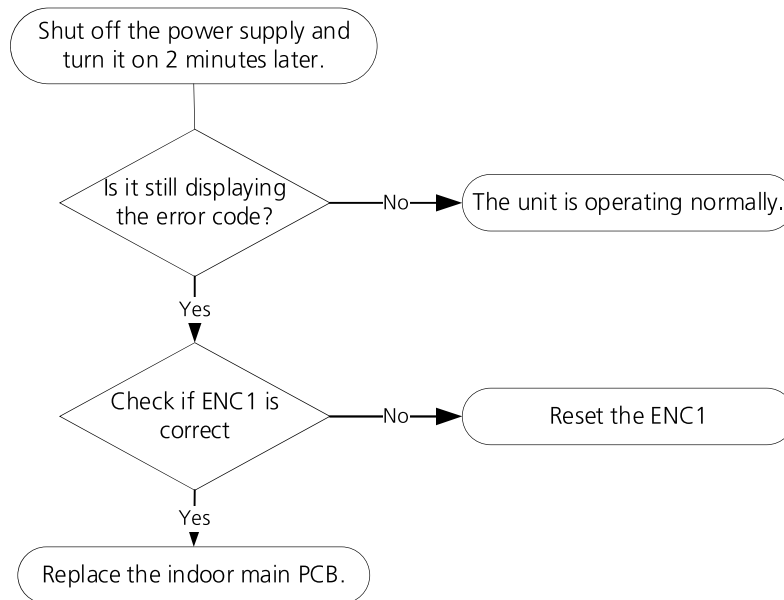
EH 3b - External fan DC bus voltage is too high fault) diagnosis and solution

Description: Indoor unit does not receive the feedback from external fan module during 150 seconds or Indoor unit receives abnormal increases or decreases in voltage from external fan module.

Recommended parts to prepare:

- Indoor main PCB

Troubleshooting and repair:



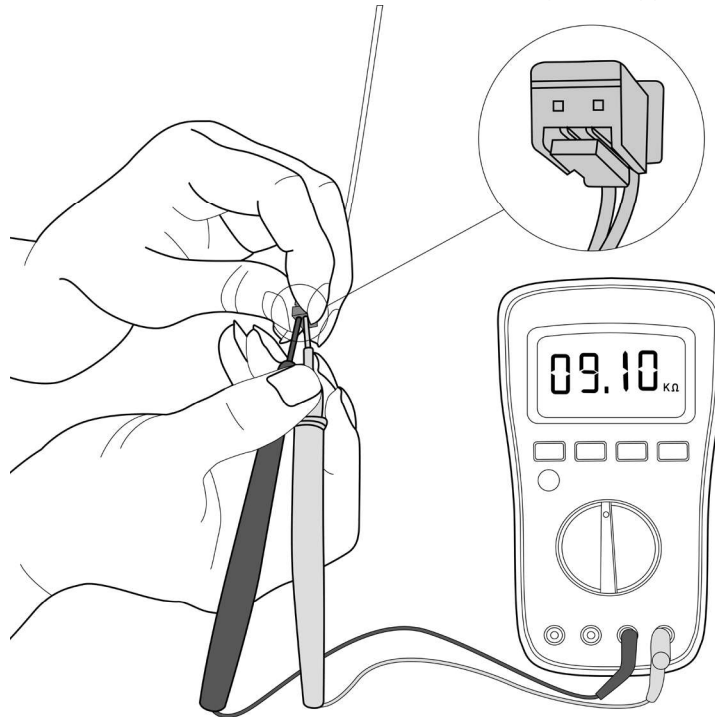
08. Check Procedures

08.01. Temperature Sensor Check

⚠ WARNING

Be sure to turn off all power supplies or disconnect all wires to avoid electric shock.
Operate after compressor and coil have returned to normal temperature in case of injury.

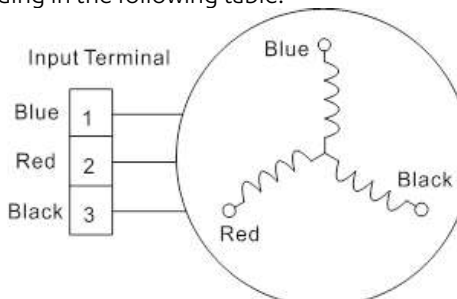
1. Disconnect the temperature sensor from PCB (Refer to Chapter 5&6. Indoor&Outdoor Unit Disassembly).
2. Measure the resistance value of the sensor using a multi-meter.
3. Check corresponding temperature sensor resistance value table (Refer to Chapter 8. Appendix).



Note: The picture and the value are only for reference, actual condition and specific value may vary.

08.02. Compressor Check

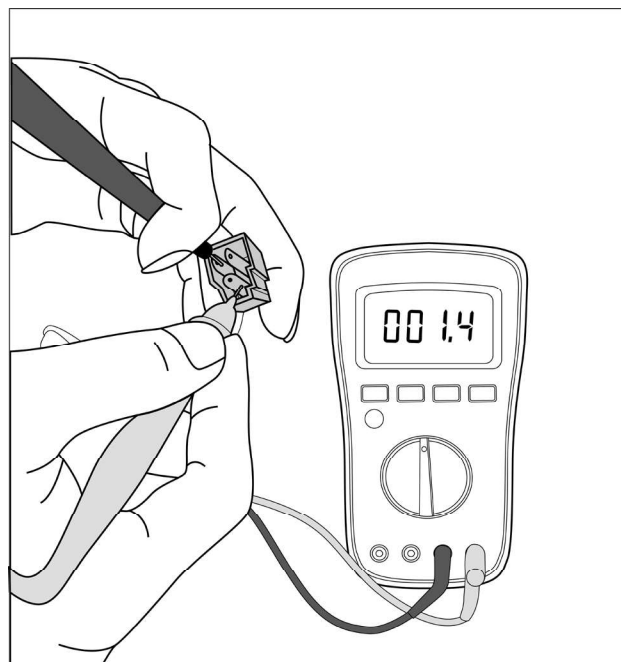
1. Disconnect the compressor power cord from outdoor PCB (Refer to Chapter 6. Outdoor Unit Disassembly)).
2. Measure the resistance value of each winding using a multi-meter.
3. Check the resistance value of each winding in the following table.



Resistance Value	KSN98D64UFZ3	KSN140D21UFZ	KTM240D43UKT	KTM240D57UMT
Blue-Red	2.7Ω	1.28Ω	1.03Ω	0.62Ω
Blue-Black				
Red-Black				

Resistance Value	KTF250D22UMT ATF235D22TMT	KSN140D58UFZ	KTF310D43UMT ATF310D43TMT	KTQ420D1UMU ATQ420D1SN5A1
Blue-Red	0.75Ω	1.86Ω	0.65Ω	0.37Ω
Blue-Black				
Red-Black				

Resistance Value	ATM150D23TFZ	ATH307CDRC8DUL
Blue-Red	1.72Ω	1.09Ω
Blue-Black		
Red-Black		



Note: The picture and the value are only for reference, actual condition and specific value may vary.

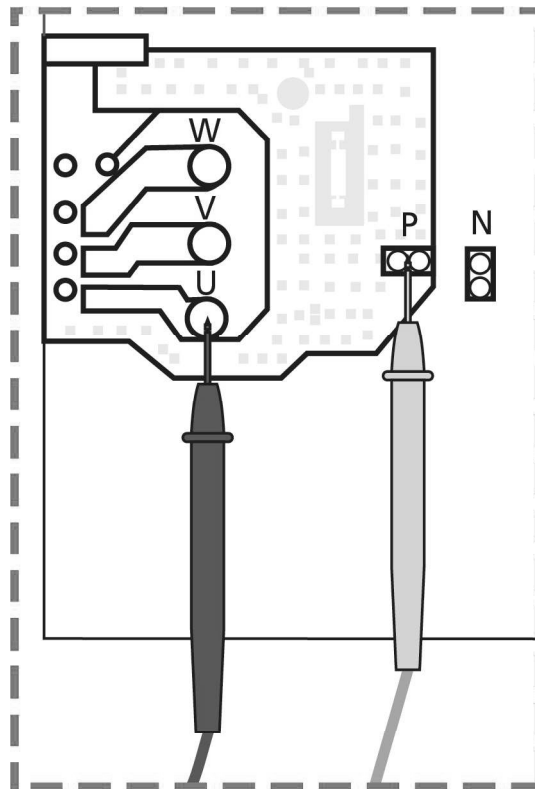
08.03. IPM Continuity Check

⚠ WARNING

Electricity remains in capacitors even when the power supply is off.
Ensure the capacitors are fully discharged before troubleshooting.

1. Turn off outdoor unit and disconnect power supply.
2. Discharge electrolytic capacitors and ensure all energy-storage unit has been discharged.
3. Disassemble outdoor PCB or disassemble IPM board.
4. Measure the resistance value between P and U(V, W, N); U(V, W) and N.

Digital tester		Resistance value	Digital tester		Resistance value	
(+)Red	(-)Black	∞ (Several MΩ)	(+)Red	(-)Black	∞ (Several MΩ)	
P	N		N	U		N
	U			V		
	V			W		
	W			-		



Note: The picture and the value are only for reference, actual condition and specific value may vary.



ActronAir

That's better. That's Actron.

actronair.com.au

1300 522 722



©Copyright 2019 Actron Engineering Pty Limited ABN 34 002767240. ®Registered Trade Marks of Actron Engineering Pty Limited. ActronAir is constantly seeking ways to improve the design of its products, therefore specifications are subject to change without notice.

Document: 9590-2023-03 Ver. 1 Issue Date: 11/2022