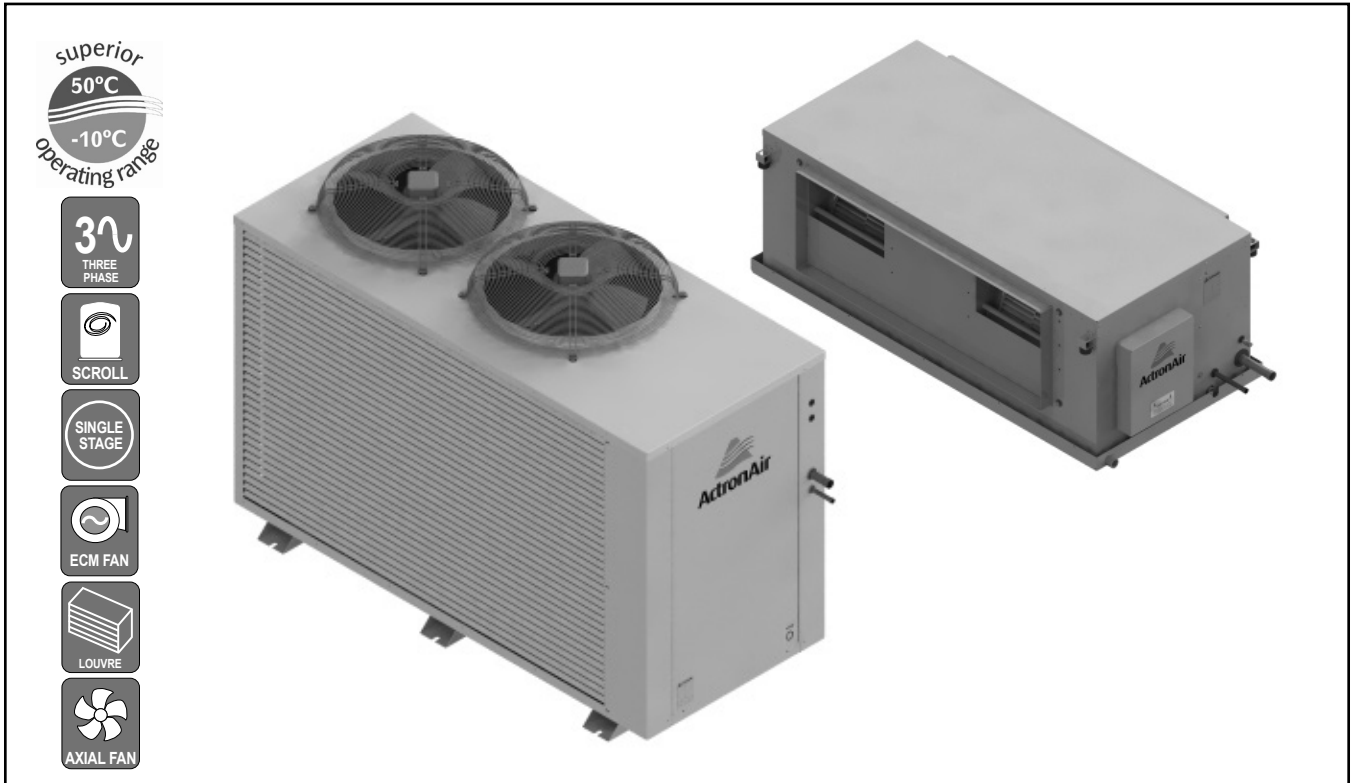


SPLIT DUCTED UNIT



3 Phase 1 Stage 29.50 kW

UNIT FEATURES

- Compliant Scroll Compressors
- Pre-charged with R410A Refrigerant
- Multiple Speed Outdoor Fans
- Blue Epoxy Coat Coil Fin Protection - Indoor & Outdoor Coils
- Louvred Outdoor Coil Guard
- Adaptive Demand Defrost
- EC Variable Speed Indoor Fan
- Adjustable Dial-Up Indoor Airflow
- Integrated Condensate Safety Drain Tray

UNIT OPTIONS

- Low Ambient
- Compressor Soft Starters
- Phase Protection
- Additional Full Coil Coat Protection
- Fault Detection Board

CONTROL OPTIONS & FEATURES

- ActronAir C7-4 (BCA Compliant)**
- 7-Day Programmable Controller with 2 Events/Day
 - Temperature Set Back and After Hours Timer
 - Auto, Heat & Cool Modes
 - Auto/Continuous Indoor Fan Operation
 - 1 Speed Indoor Fan Setting
 - Hot Start Feature
 - 2 Stage Cooling/Heating with 3rd Stage Boost Heat
 - Manual Control Inputs
 - Remote Temperature Sensors
 - 24-Hour ON/OFF Timer
 - Home/Building Automation ON/OFF Capability

UNIT COMPLIANCE

- MEPS 2012 / GEMS 2012
- AS/NZS 4755.3.1 Demand Response Capabilities
- AS/NZS 60335.1 Electrical Appliance Safety
- AS/NZS CISPR 11:2011 (Group 1 ClassA) EMC Compliance

SPECIFICATION SUMMARY

OUTDOOR UNIT MODEL	SCA290C	
INDOOR UNIT MODEL	SCG290E	
	(1) TOTAL	(2) NETT
(3) COOLING CAPACITY (kW)	29.50	28.30
(3) SENSIBLE CAPACITY (kW)	25.43	24.23
(4) HEATING CAPACITY (kW)	27.40	28.60
(5) COOLING INPUT POWER (kW)	8.45	
(5) HEATING INPUT POWER (kW)	7.97	
EER	3.49	3.35
COP	3.44	3.59
(6) INDOOR AIRFLOW (l/s) - MIN. / NOMINAL / MAX.	1275 / 1500 / 1650	
OUTDOOR SOUND PRESS. LEVEL @ 3M dB(A) - LOW / HIGH	55.9 / 59.9	
OUTDOOR SOUND POWER LEVEL dB(A) -- LOW / HIGH	72.9 / 76.9	
POWER SUPPLY - OUTDOOR	400V / 3Ph+N / 50Hz	
POWER SUPPLY - INDOOR	230V / 1 Ph+N / 50 Hz	
(2) RATED LOAD AMPS - OUTDOOR / INDOOR / TOTAL	16.1 / 8.4 / 24.5	
(7) FULL LOAD AMPS - OUTDOOR / INDOOR / TOTAL	19.5 / 11.4 / 30.9	
(8) CIRCUIT BREAKER AND CABLE AMPS	32.0	
APPROXIMATE STARTING AMPS	111.0	
WEIGHT (kg) -- INDOOR / OUTDOOR	110 / 290	

(1) Based on unit rating excluding indoor fan kW.
 (2) Measured and tested in accordance with AS/NZS 3823.1.2.
 (3) At 27°C DB / 19°C WB entering air temperatures and 35°C ambient.
 (4) At 20°C DB entering air temperature and 7°C DB / 6°C WB ambient.
 (5) Input power includes indoor fan kW.
 (6) Max. - Min. airflow application range.
 (7) Full Load Amps are based on compressor and fan motors' maximum expected current.
 (8) See Specifications sheet for cable size and circuit breaker size details.

Note: Use input power to estimate running cost.



CAPACITY SELECTION DATA

SCA290C / SCG290E

COOLING PERFORMANCE

AIR ENTERING		TOTAL CAPACITY kW	TOTAL SENSIBLE CAPACITY - kW										
OUTDOOR DB - °C	INDOOR WB - °C		AT DB TEMPERATURE ONTO INDOOR COIL - °C										
			20	21	22	23	24	25	26	27	28	29	30
25	16	29.88	20.27	22.01	23.48	25.14	26.73	28.30	29.64				
	17	30.55	18.47	20.23	21.99	23.44	25.13	26.77	28.31	29.78	31.02		
	18	31.41	16.67	18.42	20.17	21.92	23.67	25.09	26.72	28.30	29.79	31.23	
	19	32.30	14.80	16.60	18.38	20.12	21.85	23.57	25.00	26.67	28.28	29.83	31.27
	20	33.16	12.95	14.76	16.51	18.31	20.03	21.78	23.49	24.93	26.61	28.23	29.82
	21	34.07		12.86	14.66	16.47	18.22	19.96	21.70	23.44	24.84	26.56	28.20
	22	35.10			12.79	14.57	16.36	18.13	19.90	21.62	23.35	25.09	26.45
30	16	28.86	19.69	21.42	22.88	24.54	26.15	27.64	28.84				
	17	29.40	17.91	19.64	21.38	22.86	24.53	26.16	27.71	29.12			
	18	30.14	16.08	17.84	19.59	21.33	22.79	24.47	26.12	27.70	29.16	30.48	
	19	30.97	14.25	16.04	17.79	19.55	21.27	23.00	24.41	26.08	27.69	29.22	30.61
	20	31.83	12.39	14.18	15.96	17.75	19.49	21.23	22.92	24.39	26.03	27.65	29.21
	21	32.69		12.31	14.12	15.89	17.66	19.40	21.16	22.87	24.31	25.98	27.58
	22	33.67			12.23	14.04	15.83	17.59	19.35	21.06	22.79	24.21	25.89
35	16	27.73	19.03	20.78	22.23	23.89	25.42	26.91					
	17	27.95	17.26	18.99	20.73	22.21	23.85	25.47	26.97	28.18			
	18	28.71	15.44	17.20	18.95	20.69	22.15	23.81	25.45	27.00	28.42		
	19	29.50	13.63	15.38	17.17	18.91	20.66	22.09	23.78	25.43	27.01	28.50	29.77
	20	30.29	11.76	13.56	15.34	17.10	18.85	20.58	22.30	23.74	25.36	26.97	28.51
	21	31.11		11.69	13.49	15.28	17.03	18.77	20.50	22.25	23.64	25.33	26.93
	22	32.03			11.62	13.43	15.19	16.95	18.69	20.44	22.16	23.59	25.24
40	16	26.46	18.32	19.81	21.48	23.12	24.64	25.92					
	17	26.48	16.55	18.28	20.00	21.46	23.10	24.68	26.14				
	18	27.14	14.75	16.50	18.26	19.99	21.41	23.08	24.69	26.22	27.51		
	19	27.85	12.91	14.68	16.45	18.19	19.92	21.38	23.04	24.68	26.24	27.64	
	20	28.53	11.05	12.84	14.65	16.39	18.15	19.87	21.34	23.00	24.61	26.22	27.73
	21	29.35		11.01	12.79	14.56	16.32	18.08	19.80	21.53	22.95	24.58	26.18
	22	30.22			10.91	12.72	14.51	16.26	18.02	19.74	21.45	22.89	24.52
45	16	25.03	17.55	19.06	20.68	22.31	23.73						
	17	25.04	15.79	17.52	19.03	20.65	22.30	23.79					
	18	25.40	13.99	15.76	17.49	19.00	20.64	22.29	23.87				
	19	26.08	12.18	13.96	15.71	17.45	19.17	20.62	22.27	23.87	25.34		
	20	26.72	10.34	12.11	13.91	15.66	17.40	19.12	20.59	22.21	23.83	25.39	26.76
	21	27.52		10.27	12.07	13.84	15.61	17.34	19.08	20.54	22.18	23.78	25.40
	22	28.29			10.20	12.02	13.77	15.55	17.29	19.01	20.48	22.15	23.77
50	16	23.48	16.71	18.21	19.82	21.39	22.67						
	17	23.49	14.98	16.71	18.20	19.82	21.41	22.80					
	18	23.50	13.19	14.93	16.67	18.17	19.79	21.41	22.91				
	19	24.18	11.39	13.14	14.89	16.64	18.14	19.78	21.41	22.96	24.29		
	20	24.71	9.54	11.34	13.10	14.86	16.59	18.30	19.75	21.36	22.94	24.40	
	21	25.43		9.51	11.28	13.05	14.80	16.54	18.24	19.71	21.33	22.92	24.47
	22	26.15			9.44	11.21	12.47	14.75	16.49	18.19	19.68	21.28	22.90

29.50 kW
3 Phase 1 Stage

HEATING PERFORMANCE

WB TEMP ON OD COIL - °C	HEATING CAPACITY - kW									
	AT DB ENTERING INDOOR - °C									
	16		18		20		22		24	
	TH	IH	TH	IH	TH	IH	TH	IH	TH	IH
-10	18.17	17.44	18.08	17.36	17.98	17.26	17.90	17.19	17.81	17.10
-8	19.20	18.24	19.10	18.14	18.99	18.04	18.89	17.94	18.79	17.85
-6	20.28	19.06	20.16	18.95	20.04	18.83	19.91	18.72	19.78	18.59
-4	21.44	19.73	21.30	19.59	21.15	19.46	21.02	19.34	20.87	19.20
-2	22.64	20.15	22.48	20.01	22.32	19.87	22.16	19.72	22.00	19.58
0	23.93	21.06	23.76	20.91	23.58	20.75	23.41	20.60	23.23	20.44
2	25.17	22.90	24.98	22.73	24.78	22.55	24.58	22.36	24.38	22.18
4	26.50	26.50	26.27	26.27	26.06	26.06	25.84	25.84	25.60	25.60
6	27.87	27.87	27.63	27.63	27.40	27.40	27.23	27.23	26.98	26.98
8	29.36	29.36	29.19	29.19	28.93	28.93	28.66	28.66	28.38	28.38
10	31.02	31.02	30.74	30.74	30.45	30.45	30.16	30.16	29.85	29.85
12	32.66	32.66	32.34	32.34	32.03	32.03	31.71	31.71	31.38	31.38
14	34.37	34.37	34.03	34.03	33.67	33.67	33.33	33.33	32.97	32.97
16	36.13	36.13	35.76	35.76	35.38	35.38	34.99	34.99	34.62	34.62
18	37.96	37.96	37.55	37.55	37.15	37.15	36.75	36.75	36.32	36.32

TH - Total Heating Capacity (kW).
IH - Integrated Heating Capacity (kW)
Includes defrost losses.

AIRFLOW CORRECTION MULTIPLIER

% VARIATION	-15%	-10%	-5%	NOMINAL	+5%	+10%
INDOOR AIRFLOW (l/s)	1275	1350	1425	1500	1575	1650
TOTAL COOLING	0.972	0.982	0.991	1.00	1.008	1.014
SENSIBLE COOLING	0.919	0.947	0.973	1.00	1.027	1.053
HEATING FACTOR	0.991	0.994	0.997	1.00	1.002	1.004

NOTES:

- No allowance has been made for the effect of indoor fan motor.
- Selection tables are based on nominal airflows. Correction factors must be applied for selection away from these conditions.

PIPE LENGTH CORRECTION MULTIPLIER

	5m	10m	20m	30m	40m	50m	60m
COOLING	1.000	0.998	0.993	0.987	0.982	0.977	0.972
HEATING	1.000	1.000	1.000	1.000	1.000	1.000	1.000

Correction multipliers are based on horizontal pipe runs.



AIRFLOW (l/s)	EXTERNAL STATIC PRESSURE (Pa)											
	50		100		150		200		250		300	
	% PWM	W	% PWM	W	% PWM	W	% PWM	W	% PWM	W	% PWM	W
1275	---	---	---	---	53	801	57	924	62	1093	MOTOR / BLOWER LIMIT	
1300	---	---	---	---	54	810	58	947	63	1112		
1350	---	---	52	741	57	870	61	1012	66	1178		
1400	51	677	55	776	60	922	64	1070	69	1245		
1450	54	709	58	838	63	989	67	1141	73	1312		
1500	57	762	61	902	66	1052	70	1214	76	1380		
1550	60	838	65	972	69	1132	74	1298	80	1458		
1600	64	899	68	1042	73	1211	78	1375	84	1528		
1650	67	979	72	1132	77	1300	82	1458	88	1676		

NOTES:

W = Indoor Fan Power, Watts

PWM = Pulse Width Modulation Setting, % PWM

(Adjustable through CPI3-1 Board located in electrical panel).

Factory PWM Setting = 61 % PWM for 100 Pa.

 - Data in the box indicates Factory Default Setting.

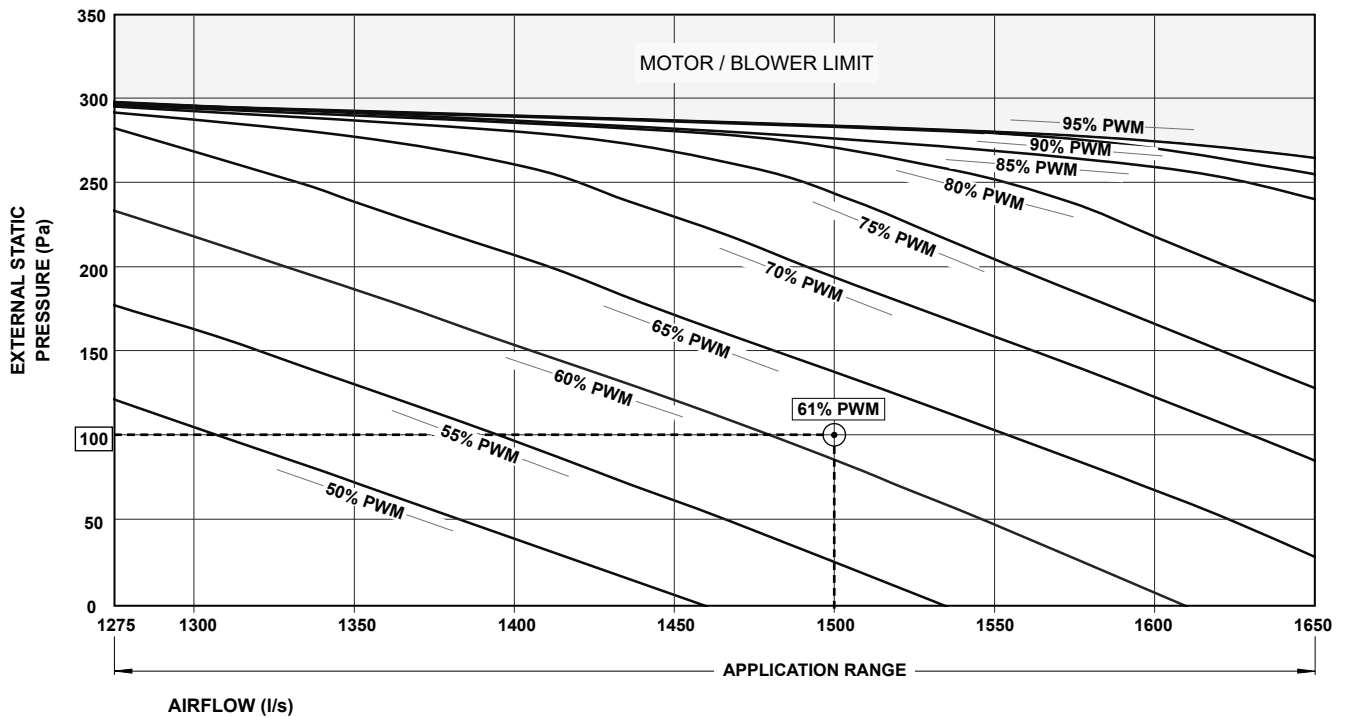
(CPI3-1) COMMERCIAL PWM INTERFACE BOARD

JUMPER PIN POSITION	INDOOR FAN
A	SCG400E PCG400U/L/R
B	PCG340L/R
C	PCG330L/R
D	PCG300L/R
E	SCG290E PCG290U/L/R
F	NOT USED

NOTES:

- LED will show PWM without %.
- Example: 61% PWM = 61 in LED.
- LED adjustments are in 1 digit increment.

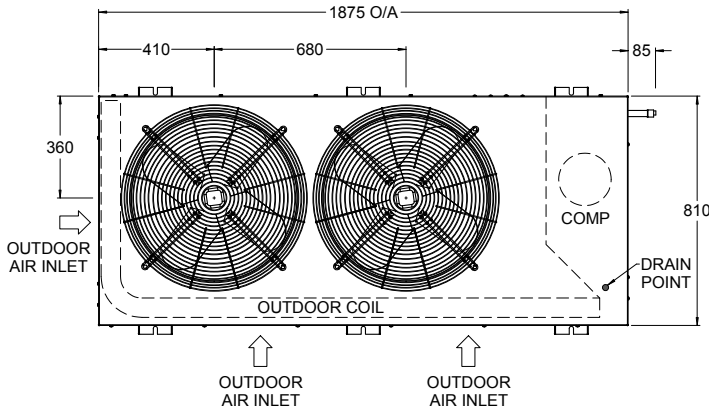
29.50 kW
3 Phase 1 Stage



OUTDOOR UNIT DIMENSIONS

SCA290C

C OUTDOOR UNIT - STANDARD MODEL

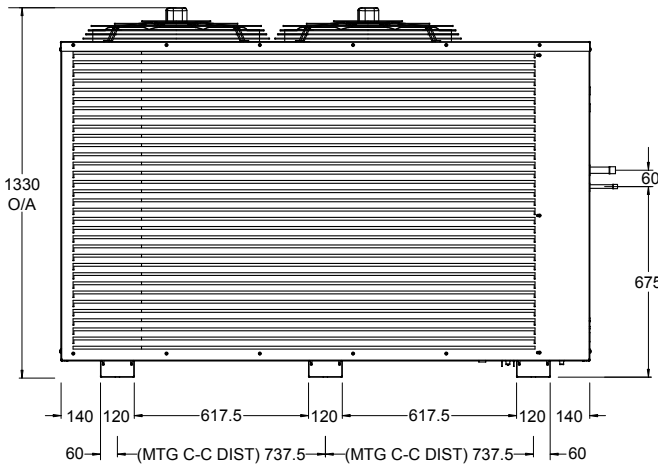
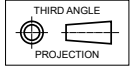


TOP VIEW

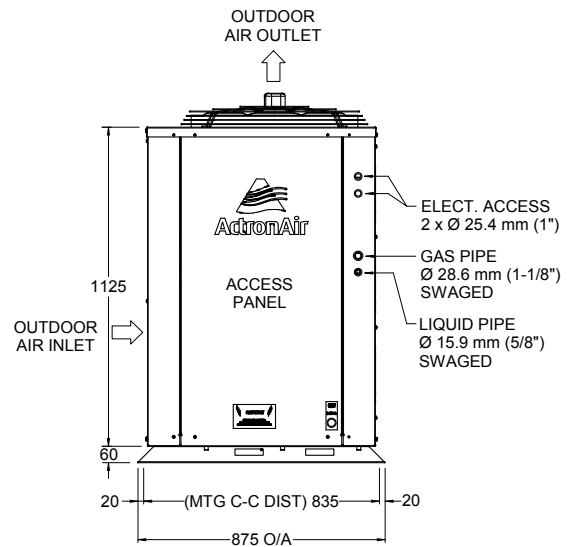
OVERALL NOMINAL DIMENSION (H x W x L)
= 1330 x 1875 x 875
USE M12 BOLT FOR FEET MOUNTING

NOTES:

1. All dimensions are in mm unless specified.
2. Do not scale drawing.
3. Additional Full Coil Coat Protection option available on all units.
4. Suggested Service Clearance and Airflow Allowances are based on conditions that the spaces are free from obstructions and walkway passage of 1000mm is available.
5. Minimum service access areas are responsibilities of the installer.



FRONT VIEW

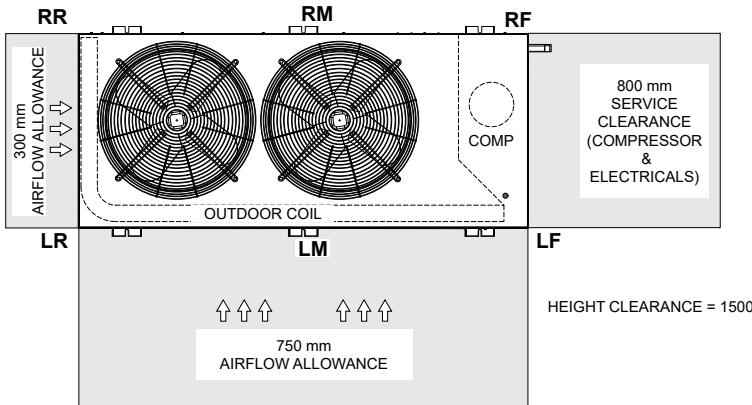


SIDE VIEW

29.50 kW
3 Phase 1 Stage

UNIT MODEL NUMBER	UNIT WEIGHT (kg)	CORNER WEIGHTS (kg)					
		LF	RF	LR	RR	LM	RM
SCA290C	290	90.0	84.1	23.2	33.8	30.9	28.0

MINIMUM SERVICE ACCESS CLEARANCES & AIRFLOW SPACE ALLOWANCES



PLEASE NOTE THAT UNDER ALL CIRCUMSTANCES, CONDENSER AIR MUST NOT RECIRCULATE BACK ONTO CONDENSER COIL. KEEP ALL CLEARANCES FREE OF ANY OBSTRUCTIONS

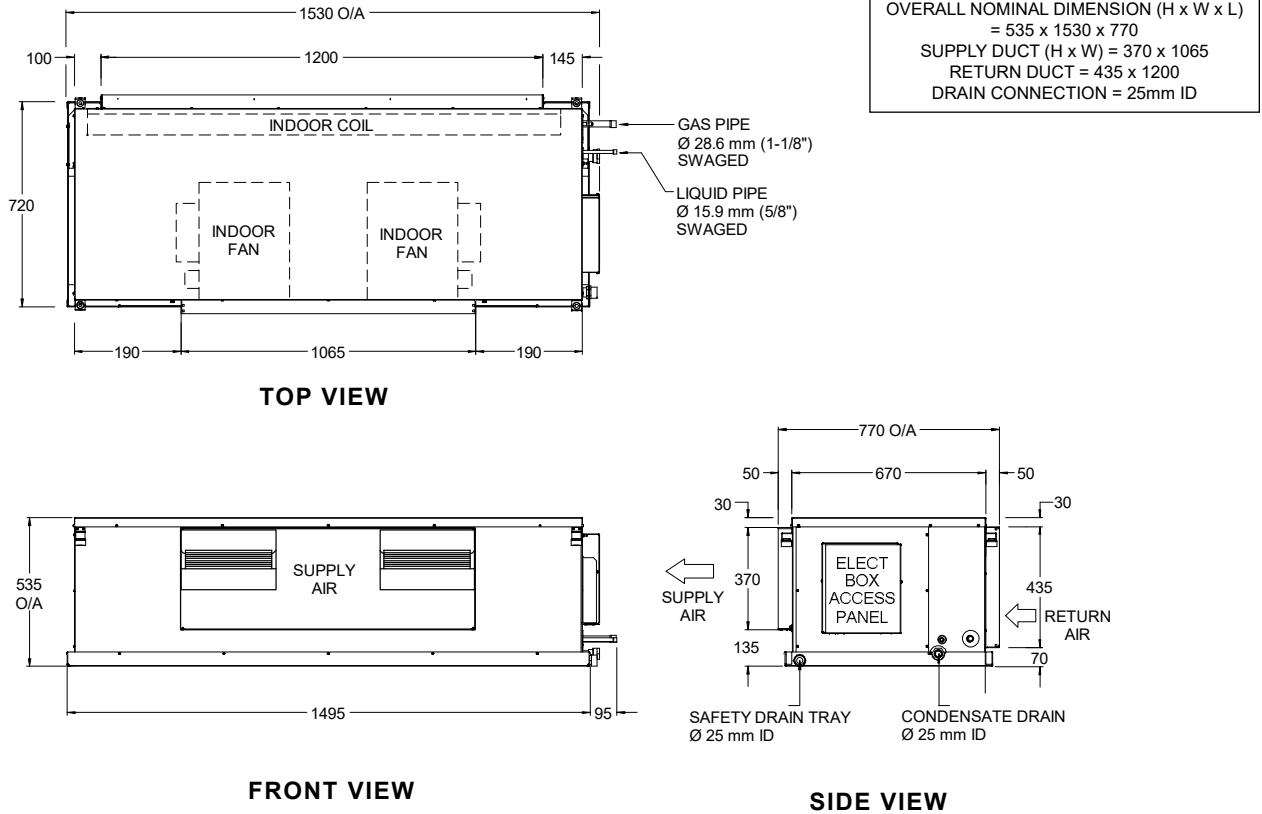
STACKING OF UNITS	
ONE IN FRONT OF THE OTHER (DISTANCE BET. LF & RF)	SIDE BY SIDE (DISTANCE BET. LF & LR)
1000 mm	1000 mm



INDOOR UNIT DIMENSIONS

SCG290E

INDOOR UNIT - STANDARD MODEL



UNIT MODEL NUMBER	UNIT WEIGHT (kg)	CORNER WEIGHTS (kg)					
		LF	RF	LR	RR	LM	RM
SCG290E	110	N/A	N/A	N/A	N/A	N/A	N/A

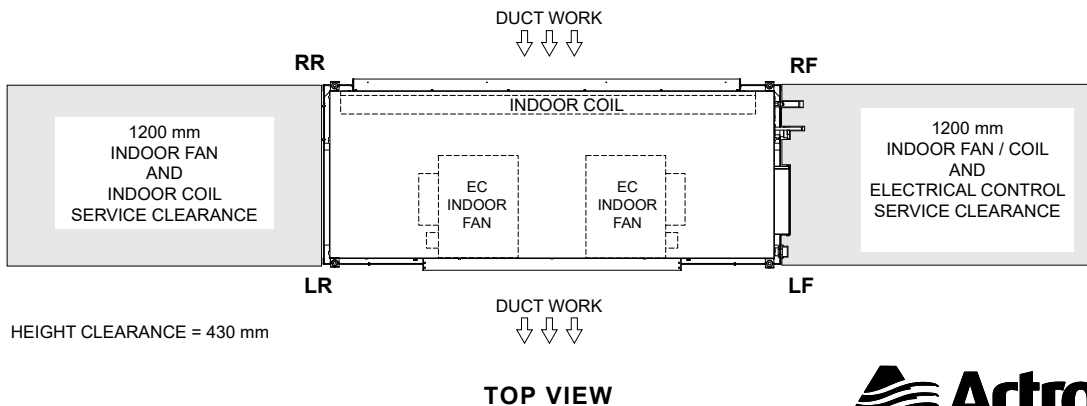
3 Phase 1 Stage
29.50 kW

MINIMUM SERVICE ACCESS CLEARANCES & AIRFLOW SPACE ALLOWANCES

STACKING OF UNITS	
ONE IN FRONT OF THE OTHER (DISTANCE BET. LF & RF)	SIDE BY SIDE (DISTANCE BET. LF & LR)
DUCT WORK	1200 mm

NOTES:

- All dimensions are in mm unless specified.
- Do not scale drawing.
- Additional Full Coil Coat Protection option available on all units.
- Suggested Service Clearance and Airflow Allowances are based on conditions that the spaces are free from obstructions and walkway passage of 1000mm is available.
- Minimum service access areas are responsibilities of the installer.



Outdoor Radiated

Sound Power Level (SWL)

Fan Speed	Sound Power Level dB(A)	Octave Band Centre Frequency (Hz), dB						
		125	250	500	1k	2k	4k	8k
Low	72.9	74.5	72.8	70.3	68.0	64.8	58.1	50.3
High	76.9	78.5	76.4	74.8	71.9	68.2	62.6	56.4

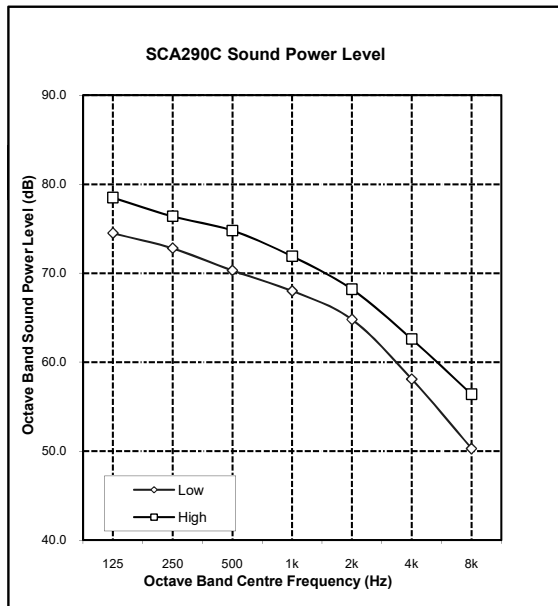
Indoor Outlet

Sound Power Level (SWL)

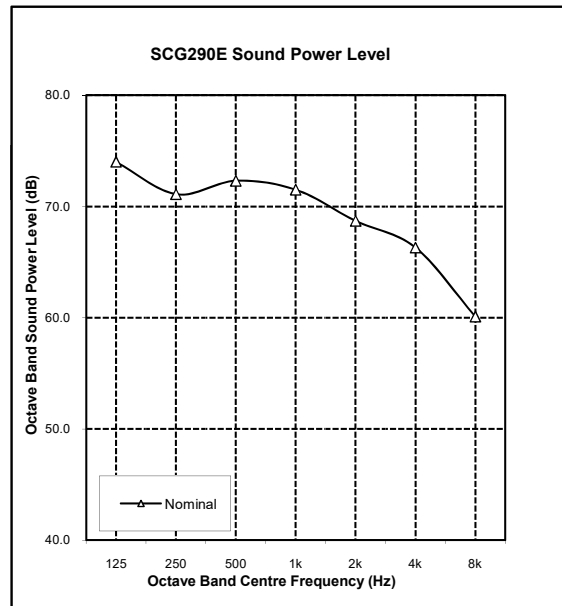
Airflow Setting	Airflow Li/s	Sound Power Level dB(A)	Octave Band Centre Frequency (Hz), dB						
			125	250	500	1k	2k	4k	8k
Nominal	1500	76.1	74.0	71.1	72.3	71.5	68.7	66.3	60.1

29.50 kW
3 Phase 1 Stage

OUTDOOR RADIATED



INDOOR OUTLET



NOTES:

1. Radiated sound power levels are based on ISO 3743-2.
2. Outlet sound power levels are based on ISO 13347-2.



SPECIFICATIONS

SCA290C / SCG290E

CONSTRUCTION	
CABINET (Indoor Unit)	0.5 - 1.2 mm Galvanized Steel
CABINET (Outdoor Unit)	0.9 - 1.6 mm ZA & Galv. Steel
SURFACE FINISH (Outdoor Unit)	65 μ Baked Polyester Powder Coat

INSULATION (Indoor Unit)	
TYPE	10 mm Foil Faced Polyethylene 15 mm Expanded Polystyrene

ELECTRICAL	
OUTDOOR UNIT	
Power Supply - 50 Hz	400 Volts x 3 Phase + Neutral
Voltage Range (min - max)	380 V - 440 V
Full Load Amps*	19.5
Rated Load Amps**	16.1
Approximate Starting Amps	111.0
IP Rating	IP44

INDOOR UNIT	
Power Supply - 50 Hz	230 Volts x 1 Phase + Neutral
Voltage Range (min - max)	216 V - 253 V
Full Load Amps*	11.4
IP Rating	IP20

OUTDOOR & INDOOR UNIT (TOTAL)	
Full Load Amps* - Phase 1	30.9
Full Load Amps* - Phase 2 & 3	16.3 & 17.1
Rated Load Amps**	24.5

IMPORTANT - The local electricity authority may require limits on starting current and voltage drop, please check prior to purchase.

* Full Load Amps are based on Compressor and Fan Motor's maximum expected current.

** Rated Load Amps are measured and tested in accordance with AS/NZS3823.1.2.

CABLE SIZE & CIRCUIT BREAKER SIZE	
Suggested minimum cable size should be used as a guide only, refer to AS/NZS 3000 "Australian/New Zealand Wiring Rules" for more details.	
Cable Size (main line)	6.0 mm ² (SUGGESTED MINIMUM)
Cable Size (indoor to outdoor wire)	1.5 mm ² (SUGGESTED MINIMUM)
Circuit Breaker Size	32.0 Amps

OUTDOOR COIL	
TUBE TYPE	Copper - Rifle Bore
FIN TYPE	Aluminium - Wave
FACE AREA (m sq)	2.51
FIN SPACING (per m)	630
COIL COATING	Blue Epoxy Coat Coil Fin Protection
ROWS	---

OUTDOOR FAN	
NUMBER OF FANS x TYPE	2 x Axial
NUMBER OF BLADES PER FAN	4
DIAMETER (mm)	560
OUTPUT kW	0.37
MOTOR TYPE / DRIVE TYPE	6 Pole External Rotor / Direct
FAN SPEED CONTROL	2 Speed via Capacitor

The standard type outdoor fans fitted to this unit will accept up to 5Pa of external static resistance.

INDOOR COIL	
TUBE TYPE	Copper - Rifle Bore
FIN TYPE	Aluminium - Louvre
FACE AREA (m sq)	0.863
FIN SPACING (per m)	472
COIL COATING	Blue Epoxy Coat Coil Fin Protection
ROWS	---

INDOOR FAN	
NUMBER OF FANS x TYPE	1 x Twin Deck Centrifugal EC Fan
DIAMETER / WIDTH (mm)	270 x 270
OUTPUT kW / INPUT kW	1.12 / 1.26
MOTOR TYPE / DRIVE TYPE	Variable Speed EC Motor / Direct

AIR FILTERS	
All return air including fresh air must have adequate filters supplied and fitted by the installing contractor. Filters must be located in accessible location between the return air grille and the unit.	
ActronAir® does not supply or make any provisions for return air filter.	

COMPRESSOR	
NUMBER PER UNIT x TYPE	1 x Scroll (Hermetic)
FULL LOAD AMPS	16.7
LOCKED ROTOR AMPS	111.0
STARTING METHOD	D.O.L. (optional soft starter)

REFRIGERATION SYSTEM	
REFRIGERANT TYPE	R-410A
EXPANSION CONTROL	Direct Expansion Orifice
FACTORY CHARGE (grams)	11,050
PRE-CHARGE LENGTH (metres)	5
ADDITIONAL REF. CHARGE (gm/m)	165

FILTER DRIER	
CONNECTION SIZE & TYPE	15.9 mm (5/8") ODF Soldered Bi-Flow
FACTORY SUPPLIED / FITTED	Yes
See Installation Section for complete Filter Drier specifications.	

INTERCONNECTING PIPE RUN	
MAX PIPE LENGTH (metres)	60
MAX. VERTICAL LENGTH (metres)	20 (Included in Max. Pipe Length)
FIELD PIPE SIZES	
Liquid Pipe	15.9 mm (5/8")
Gas Pipe	28.6 mm (1-1/8")

PIPE CONNECTIONS		
Indoor	Liquid Pipe	15.9 mm (5/8") Swaged to fit 15.9 mm (5/8") field pipe
	Gas Pipe	28.6 mm (1-1/8") Swaged to fit 28.6 mm (1-1/8") field pipe
Outdoor	Liquid Pipe	15.9 mm (5/8") Swaged to fit 15.9 mm (5/8") field pipe
	Gas Pipe	28.6 mm (1-1/8") Swaged to fit 28.6 mm (1-1/8") field pipe
CONNECTION TYPE		Solder
Insulate both gas and liquid pipes separately.		

PROTECTION DEVICES	
HIGH PRESSURE CUTOFF SWITCH	Nonadjustable (Automatic Reset)
LOW PRESSURE CUTOFF SWITCH	Nonadjustable (Automatic Reset)
COMPRESSOR MOTOR TEMP.	Internal Thermal Cut-Out
INDOOR FAN OVERLOAD	Internal Thermal Cut-Out
OUTDOOR FAN OVERLOAD	Internal Thermal Cut-Out
SUMP HEATER WATTS	50.0 W during Comp. Off Cycle

ELECTRIC CONTROLS	
DEFROST METHOD	Reverse Cycle
DEFROST TYPE	Adaptive Demand Defrost
CONTROL CIRCUIT BREAKER	16.0 Amps
C7-4 FIELD CONTROL WIRING	2 Core 14 / 0.20 Screened Cable

OPERATING RANGE
It is essential that the unit is correctly sized for the application and operates within its recommended range of operating conditions as shown below.

MODE	RANGE	INDOOR AIR INTAKE TEMPERATURE	OUTDOOR AIR INTAKE TEMPERATURE
Cooling	Max.	30°C DB / 22°C WB	50°C DB
	Min.	20°C DB / 16°C WB	15°C DB
Heating	Max.	24°C DB	19.5°C DB / 18°C WB
	Min.	16°C DB	-10°C WB

IMPORTANT - For low ambient cooling use option S. Lower ambient available on request. Contact your nearest ActronAir office for more details.

Low Ambient Cooling	Option S	Max.	29°C DB / 19°C WB	50°C DB
		Min.	20°C DB / 15°C WB	5°C DB
	On Request	Max.	29°C DB / 19°C WB	50°C DB
		Min.	20°C DB / 15°C WB	-5°C DB

3 Phase
1 Stage

29.50 kW



WIRING DIAGRAM

SCA290C / SCG290E

29.50 kW
3 Phase 1 Stage

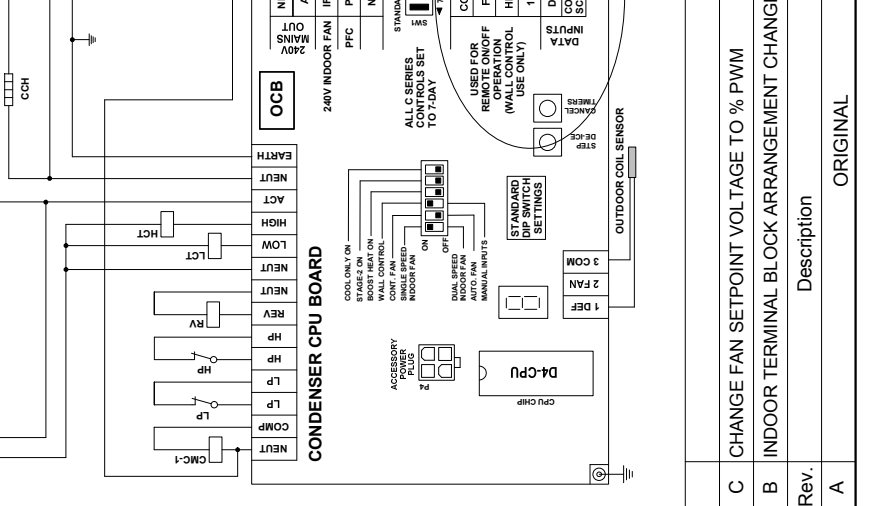
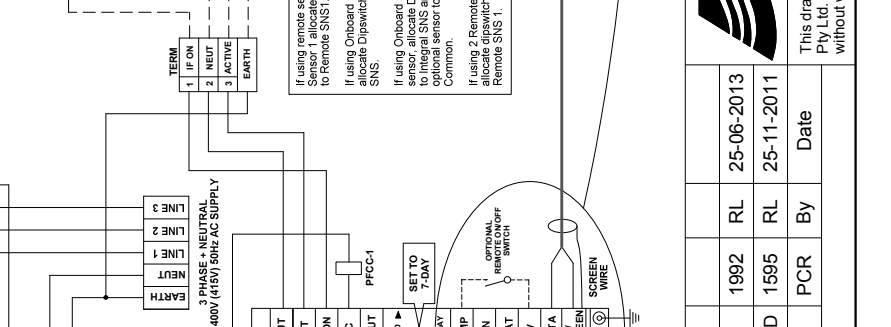
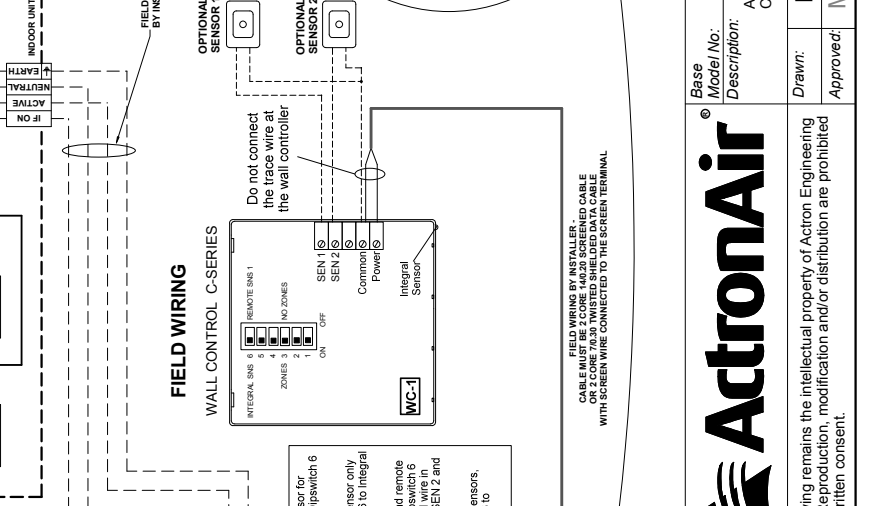
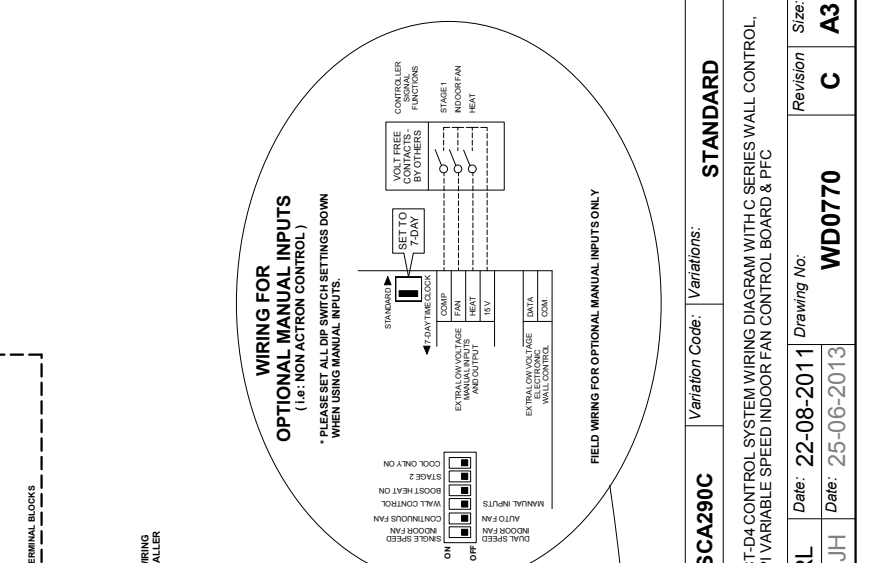
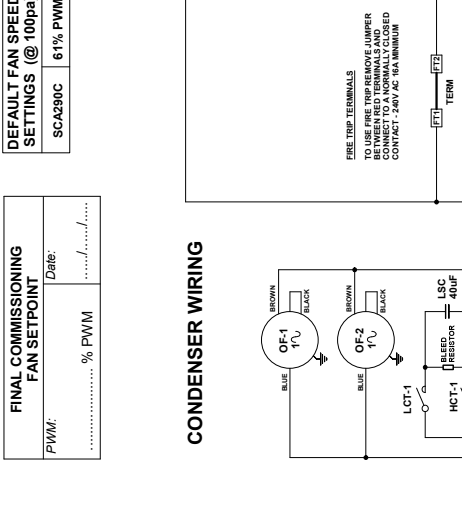
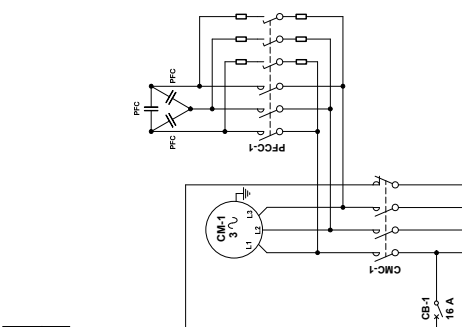
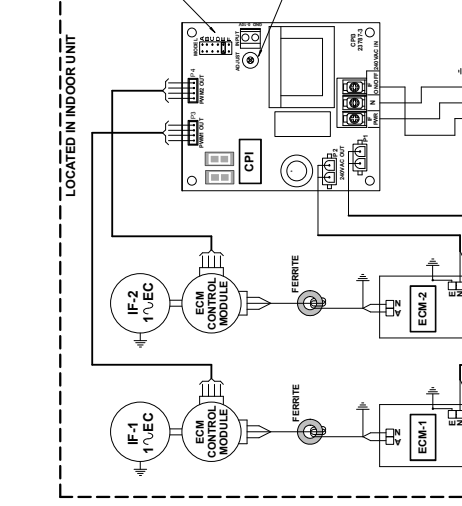
LEGEND

CB	CIRCUIT BREAKER
CCH	CRANKCASE HEATER
CM	COMPRESSOR MOTOR
CMC	COMPRESSOR MOTOR CONTACTOR
CPI	INDOOR FAN VARIABLE SPEED BOARD
ECM	EC FILTER
HCT	HIGH SPEED FAN CONTACTOR
HP	HIGH PRESSURE SWITCH
IF	INDOOR FAN MOTOR
LCT	LOW SPEED FAN CONTACTOR
LP	LOW PRESSURE SWITCH
LSC	LOW SPEED CAPACITOR
OF	OUTDOOR FAN MOTOR
OCB	OUTDOOR CONTROL BOARD
PFC	POWER FACTOR CORRECTION CAPACITORS
PFCC	POWER FACTOR CORRECTION CONTACTOR
RV	REVERSING VALVE
TERM	MAIN TERMINAL BLOCKS
WC	WALL CONTROLLER

INDOOR FAN JUMPER PIN FUNCTIONS

JUMPER PIN FUNCTION	INDOOR FAN
A	SCA290C/SCG290E
B	NOT USED
C	NOT USED
D	NOT USED
E	SCA290C/SCG290E
F	NOT USED

NOTE: JUMPER PIN MUST BE INSTALLED IN THE CORRECT POSITION FOR THE MINIMUM & MAXIMUM INDOOR FAN SPEEDS ARE CORRECT.



DEFAULT FAN SPEED SETTINGS (@ 100ps)

SCA290C	61% PWM
---------	---------

FINAL COMMISSIONING FAN SETPOINT

PWM:	% PWM
Date:/...../.....

Base Model No:	SCA290C	Variation Code:	STANDARD
Description:	ACT-D4 CONTROL SYSTEM WIRING DIAGRAM WITH C SERIES WALL CONTROL, CPI VARIABLE SPEED INDOOR FAN CONTROL BOARD & PFC		
Drawn:	RL	Date:	22-08-2011
Approved:	MJH	Date:	25-06-2013
Revision:	C	Size:	A3
Drawing No:	WD0770		



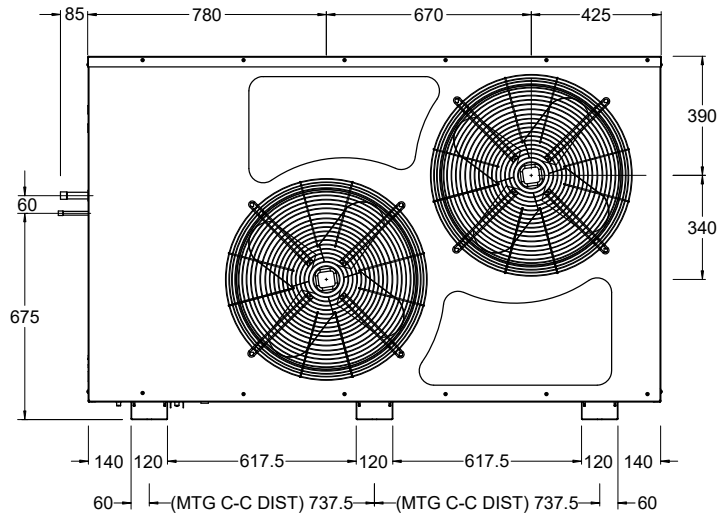
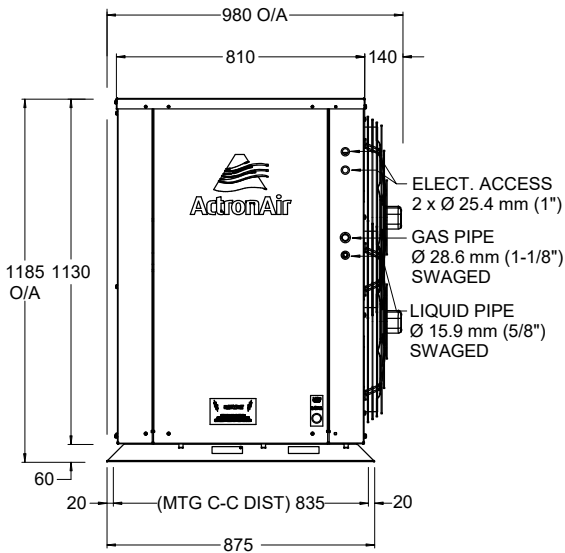
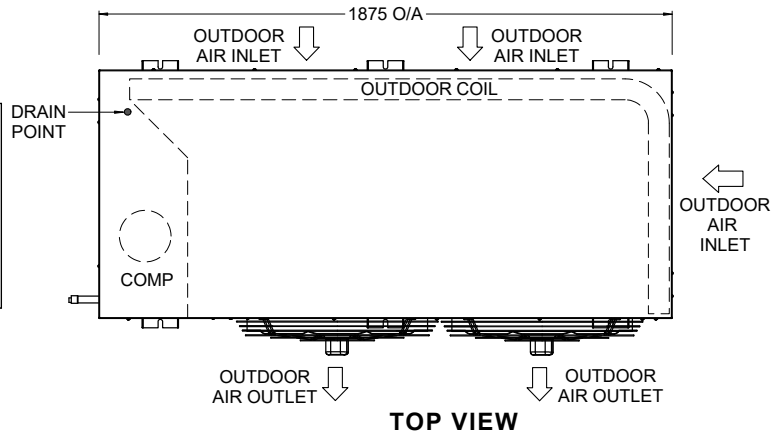
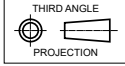
Rev.	A	Description	ORIGINAL
Rev.	B	INDOOR TERMINAL BLOCK ARRANGEMENT CHANGED	1595
Rev.	C	CHANGE FAN SETPOINT VOLTAGE TO % PWM	1992
Rev.	RL	Date	25-11-2011
Rev.	RL	Date	25-06-2013

H OUTDOOR UNIT - HORIZONTAL DISCHARGE FANS 5 Pa

OVERALL NOMINAL DIMENSION (H x W x L)
= 1185 x 1875 x 980
USE M12 BOLT FOR FEET MOUNTING

NOTES:

1. All dimensions are in mm unless specified.
2. Do not scale drawing.
3. Additional Full Coil Coat Protection option available on all units.
4. Refer Pipe Connection Details on Specifications Sheet.
5. Suggested Service Clearance and Airflow Allowances are based on conditions that the spaces are free from obstructions and walkway passage of 1000mm is available.
6. Minimum service access areas are responsibilities of the installer.

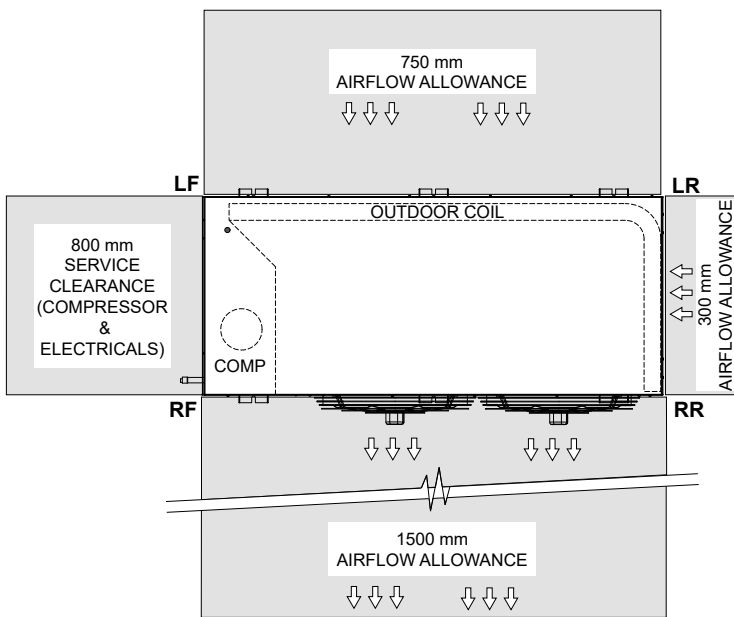


3 Phase
1 Stage
29.50 KW

SIDE VIEW

FRONT VIEW

MINIMUM SERVICE ACCESS CLEARANCES & AIRFLOW SPACE ALLOWANCES



PLEASE NOTE THAT UNDER ALL CIRCUMSTANCES, CONDENSER AIR MUST NOT RECIRCULATE BACK ONTO CONDENSER COIL. KEEP ALL CLEARANCES FREE OF ANY OBSTRUCTIONS

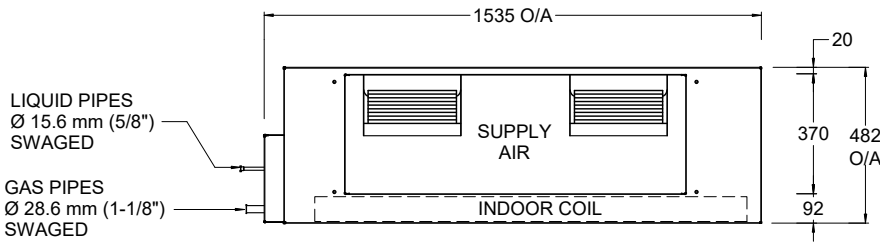
STACKING OF UNITS	
ONE IN FRONT OF THE OTHER (DISTANCE BET. LF & RF)	SIDE BY SIDE (DISTANCE BET. LF & LR)
1500 mm	1000 mm

HEIGHT CLEARANCE = 600

TOP VIEW

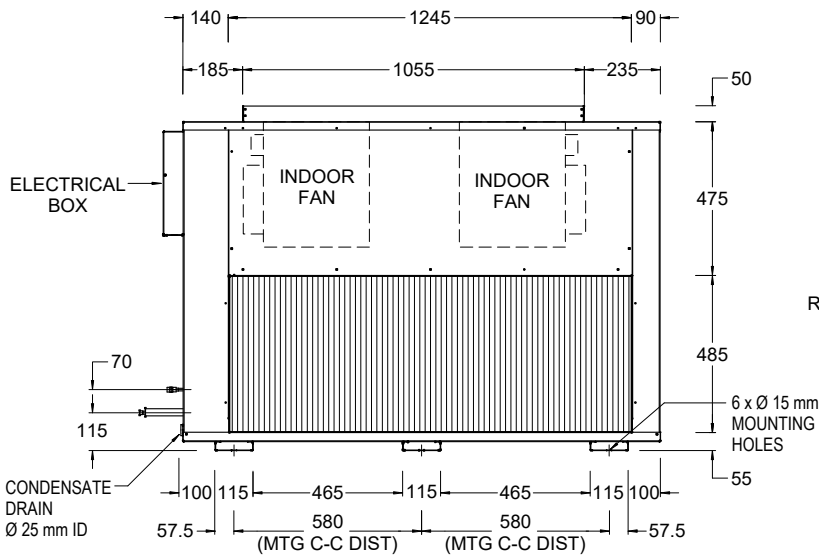


V INDOOR UNIT - UPRIGHT FAN COIL WITH VERTICAL DISCHARGE

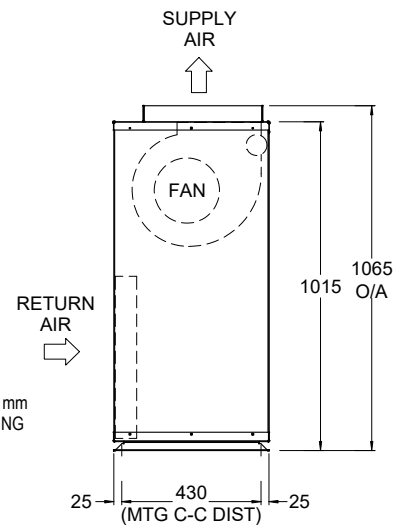


TOP VIEW

OVERALL NOMINAL DIMENSION (H x W x L)
 = 1065 x 1535 x 482
 SUPPLY DUCT (H x W) = 370 x 1055
 RETURN DUCT (H x W) = 485 x 1245
 DRAIN CONNECTION = 25mm ID



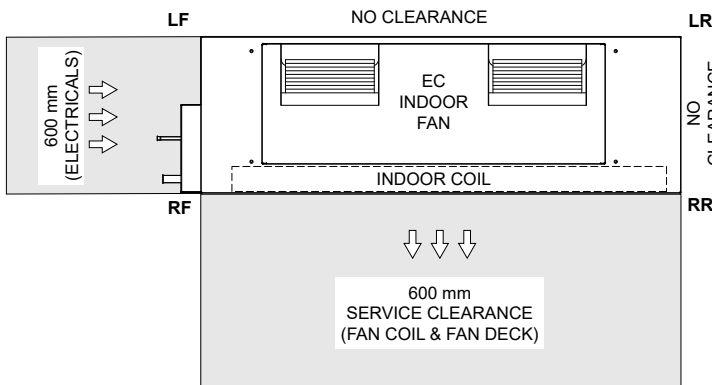
FRONT VIEW



SIDE VIEW

29.50 kW
3 Phase 1 Stage

MINIMUM SERVICE ACCESS CLEARANCES & AIRFLOW SPACE ALLOWANCES

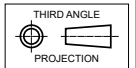


TOP VIEW

HEIGHT CLEARANCE = DUCT WORK

NOTES:

- All dimensions are in mm unless specified.
- Do not scale drawing.
- Refer Fan Curve to corresponding standard SCG400E model.
- Additional Full Coil Coat Protection option available on all units.
- Suggested Service Clearance and Airflow Allowances are based on conditions that the spaces are free from obstructions and walkway passage of 1000mm is available.
- Minimum service access areas are responsibilities of the installer.



STACKING OF UNITS	
ONE IN FRONT OF THE OTHER (DISTANCE BET. LF & RF)	SIDE BY SIDE (DISTANCE BET. LF & LR)
600 mm	1000 mm

