

ActronAir Easyconnect

Installation and Setup Guide for Wall Hung Systems



easyconnect

Compatible with:	
Serene	Serene 2
WRE-026AS	WRE-026CS
WRE-035AS	WRE-035CS
WRE-050AS	WRE-050CS
WRE-071AS	WRE-072CS
WRE-080AS	WRE-085CS

IMPORTANT NOTE:

Please read this manual carefully before installing or operating your air conditioning unit.



Table of Contents

01. Specification and Precautions	3
02. Installation	4
03. Download and Install the Easyconnect App.....	5
04. Create an Account.....	5
05. Device Configuration	7
05.01. Amazon Alexa	7
05.02. Google Home	9
05.03. Smart Device (Easyconnect)	11
06. Operation and Control	16
06.01. Amazon Alexa	16
06.02. Google Home	17
06.03. Smart Device (Easyconnect)	19
07. Smart Device - Operating Functions.....	20

01. Specification and Precautions

Model: WUK-WH1

Standard: IEEE 802.11b/g/n

Antenna Type: External omnidirectional Antenna

Frequency: Wi-Fi 2.4G

Maximum Transmitted Power: 15dBm Max

Operation Temperature: 0 °C ~45 °C/32 °F~113 °F

Operation Humidity: 10%~85%

Power Input: DC 5V/300mA

Applicable system: iOS, Android

NOTE

Easyconnect App will require software updates from time to time to ensure compatibility with the latest Android and iOS operating versions. ActronAir will ensure updates are made quickly but will ultimately not be responsible for any issues relating to Android and iOS operating systems.

Wireless safety strategy:

Smart kit only supports WPA-PSK/WPA2-PSK encryption and non encryption. WPA-PSK/WPA2-PSK encryption is recommended.

NOTE

- The Smart phone camera needs to be 5 megapixels or more to scan the QR code.
- Network encryption may need to be reconfigured, when necessary, to ensure connectivity.
- Where issues in connectivity arise from the wireless network, there may be some differences in the display between the Easyconnect App and connected controllers.

NOTE

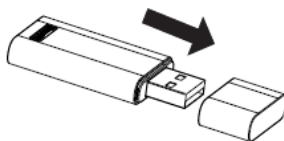
ActronAir will not be liable for any issues and problems caused by network connections, Wi-Fi router and smart devices. Please contact the product supplier of these third party devices directly to get further assistance.

02. Installation

BEFORE STARTING:

Isolate the power to the indoor unit and ensure power is not being supplied to the system to prevent electric shock. Ensure correct lockout/tag out procedures are adhered to.

Remove the Easyconnect USB kit from the box and take off the protective cap.



1. Open the front panel of the indoor unit and insert the Easyconnect USB kit into the USB port on the display receiver PCB. If the port is not present, install the supplied USB port cable plug into the vacant CN3 plug which is provided in the WUK-WH1 bag.

NOTE

USB ports are factory standard for all units manufactured after February, 2018. Check the serial number to identify the correct manufacturing date.

2. Please place the QR code sticker on the side of the indoor unit near the manufacturing label, providing sufficient access to the side of the unit.

Serene



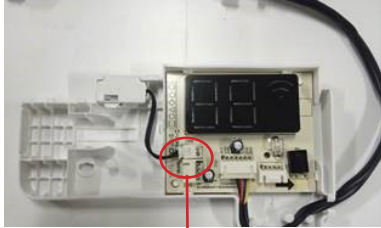
Open the receiver board by unscrewing the screw.

Serene 2



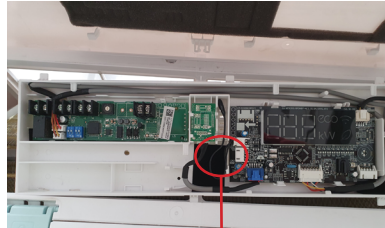
Open the receiver board by unscrewing the screw.

Serene



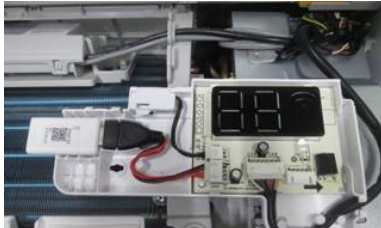
Install the Wi-Fi USB cable into CN03 if required.

Serene 2



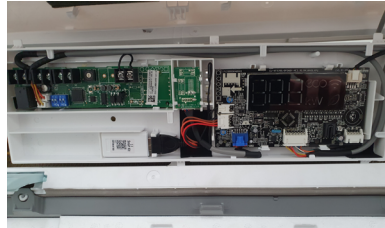
Install the Wi-Fi USB cable into CN03 if required.

Serene



Ensure that the Easyconnect Module is secured into the receiver panel.

Serene 2



3. Close the panel and reset power to the Air conditioner.

03. Download and Install the Easyconnect App

Search Easyconnect on your compatible mobile phone, tap download and then open the app to create a new account.

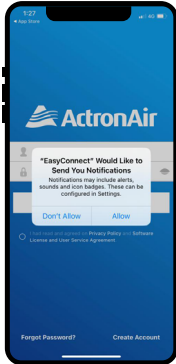
(Refer to Section 04, for new account setup)



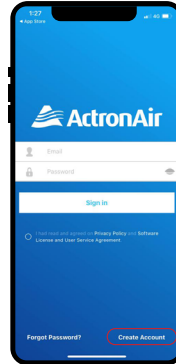
04. Create an Account

- Please ensure that you have a secure and operational internet connection readily available for the creation of your account and system setup.
- You will also require an active e-mail address which will be used as your username when creating an account, logging into and using the Easyconnect app.

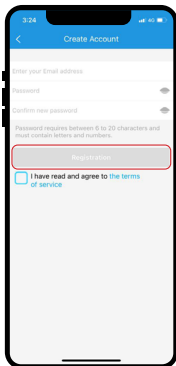
1. When the app is opened for the first time, it will ask permission for sending notifications. It is the discretion of the user to allow or disallow the permission. The user can change this permission at any time in the phone's settings.



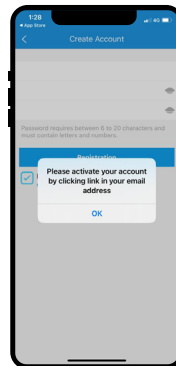
2. Tap on **Create Account**.



3. Enter your e-mail address, create and confirm a unique password, confirm the terms and conditions and tap on **Registration**.



4. Once you have successfully registered with the app, it will prompt you to activate your account by clicking the link in your registered email address.



NOTE

- Please check your email for an email from **iot1@annto.com** titled "Hi, please activate your account to complete the registration".
- If you do not see the email in a few minutes, check your **"junk or spam"** folder.
- Activation time is sensitive and the account will need to be activated within the first 5 minutes of completing the registration.

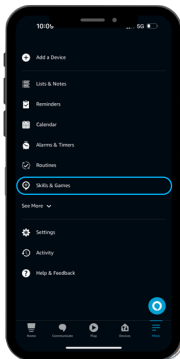
05. Device Configuration

05.01. Amazon Alexa

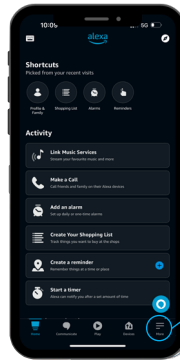
1. Download Amazon Alexa from google playstore or apple if you haven't done so already. Once logged in, follow below steps



3. On this new screen, click on "Skills & Games" which will take you to a new search screen



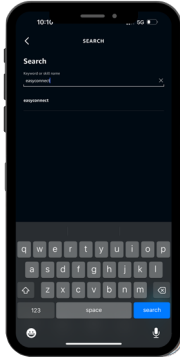
2. Once the Amazon Alexa app has been installed on your device, open up the app. Click on the "More" button which is positioned at the bottom right hand side of the screen. When you click "More" this will take you to a new screen.



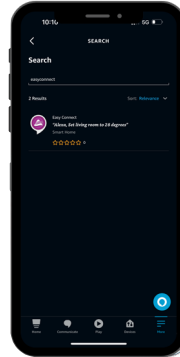
4. Tap on the search tool on the top right hand corner.



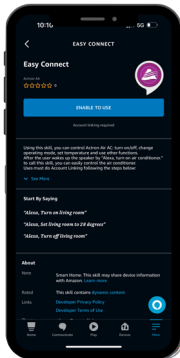
5. Search for “easyconnect” skill.



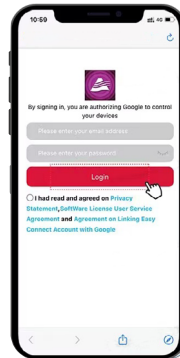
6. Select Easyconnect” from the results list.



7. Once you have selected EasyConnect from the results list, click on “Enable to Use” button which will take you to the next step.

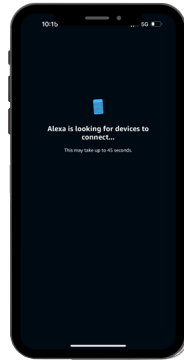
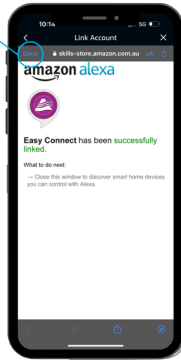


8. A login prompt for easyconnect will appear, login with your Easyconnect app credentials.



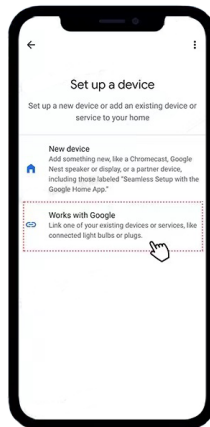
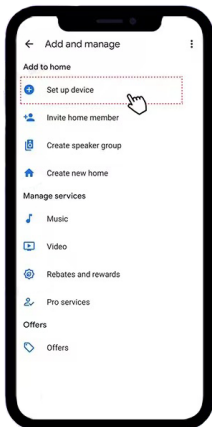
9. Once logged in, the Amazon Alexa App will confirm the successful linking of your account. You can now close this window by clicking on “Done” on the top left hand corner.
10. Alexa will then start looking for devices to connect with.

Click Here

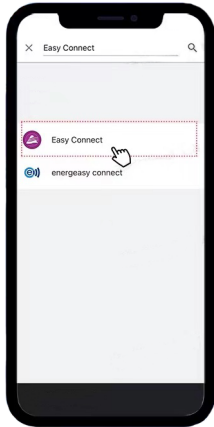


05.02. Google Home

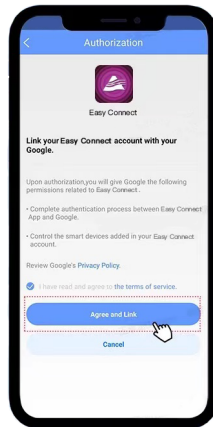
1. Download the latest version of Easyconnect App and add the smart device.
2. Download and open Google Home App, tap “Set up device” -
3. Select “Works with Google”, and enter to search “easyconnect”.



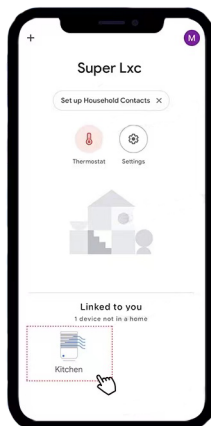
4. Choose “easyconnect” and jump to the authorisation page of Easyconnect App.



5. After logging in to your Easyconnect account, tap “Agree and Link”.



5. You will be redirected to Google Home App and the device will be shown.



Now you can use Google Home voice controller to control your devices.

05.03. Smart Device (Easyconnect)

NOTES

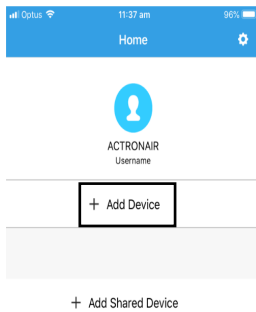
- Ensure that the Android or iOS device can be automatically connected to the Wi-Fi network - you can adjust this in your phone settings.
- To configure Easyconnect, a wireless remote controller must be used - a disposable control is supplied in the kit to setup the Wi-Fi.

There are two ways to configure the network connection. This may be done via Bluetooth, scanning for available devices or by manual selection of the device.

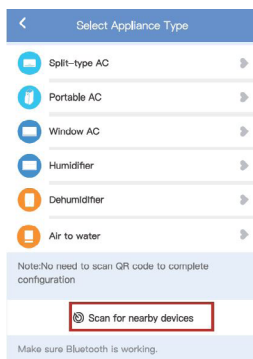
05.03.01. Bluetooth Scanning

Ensure that Bluetooth on the mobile device is ON

1. Tap on **+ Add Device**.



4. Tap on **Scan for nearby devices**.

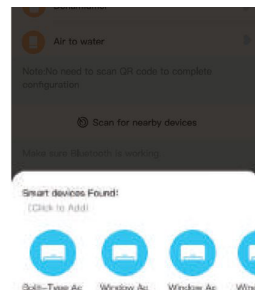


2. Power the Air conditioner off from

the power supply for 15 seconds, then back on again.

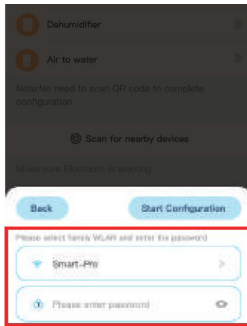
3. Within 8 minutes of power being reset, press the LED button on the remote control 7 times (within 10 seconds) - this will initiate access point mode and allow your phone to link with the Easyconnect app setup process.

5. Wait smart devices to find, then click to add it.

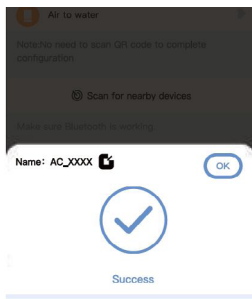


Note: If no device is found, go straight to manual configuration Section 06.02, step 2.

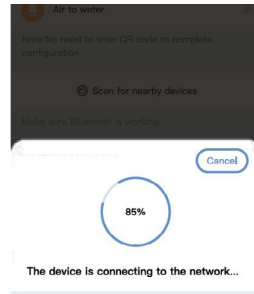
6. Select home Wi-Fi, enter the password.



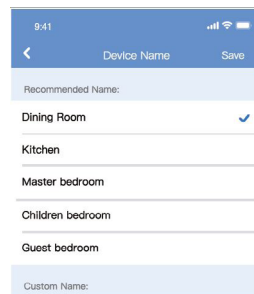
8. Device successfully detected. You can modify the default name.



7. Wait to connect to the network.

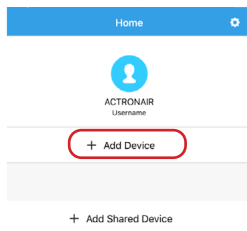


9. You can choose an existing name or customize a new name.



05.03.02. Manual Selection of Device

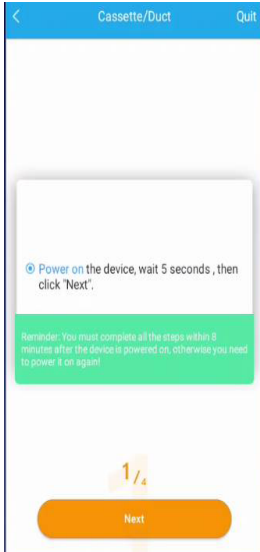
1. Tap on + Add Device.



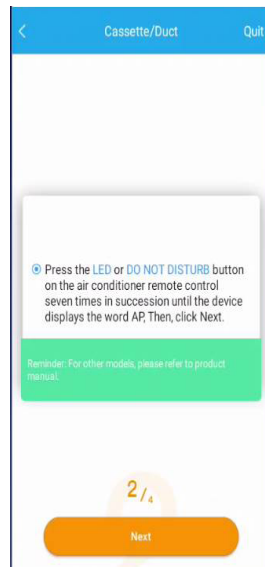
2. Tap the **Cassette/Duct** option.



3. Power the Air conditioner off from the power supply for 15 seconds, then back on again.



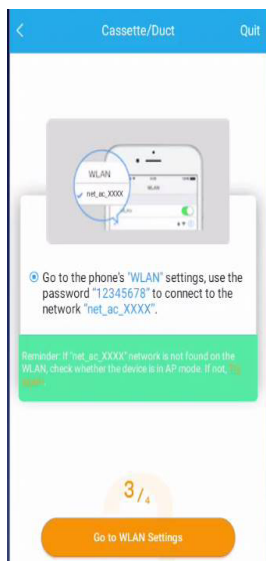
4. Within 8 minutes of power being reset, press the LED button on the remote control 7 times - this will initiate access point mode and allow your phone to link with the Easyconnect app setup process. Ensure the remote control is pointed at the appropriate receiver:
 - Cassettes (CRE) – Receiver on the indoor unit fascia.
 - Ducted (LRE/BRE) – Receiver on the Smart Port .



NOTE

Access Point mode is indicated by the white LED on the smart port flashing.

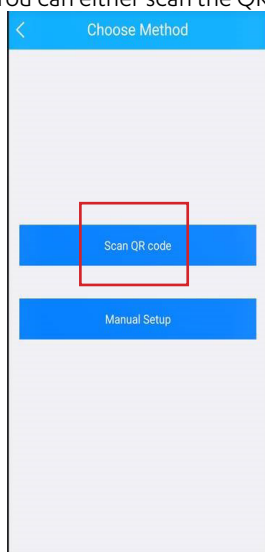
5. The next step will direct you to connect your network - link to: net_ac_xxxx
Default password is "12345678".



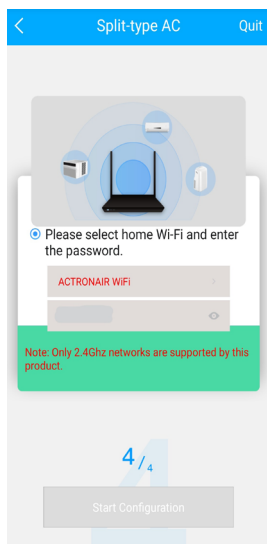
NOTE

Android devices will allow you to scan the QR code provided with the Easyconnect module, this will bypass the manual setup - allowing for quicker configuration. For android configuration using QR scanner, please refer to images below.

6. You can either scan the QR code or do manual setup.



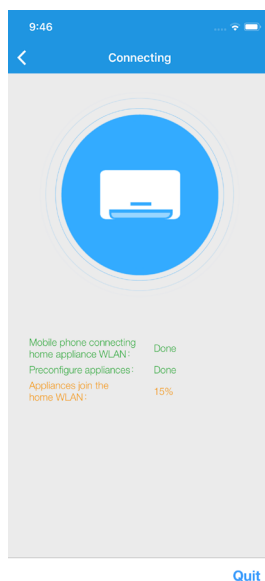
7. Select your Wi-Fi name (SSID) and enter your router password to commence configuration.



8. When a Wi-Fi connection has been established between Easyconnect and the network - automatic setup will begin.

- Once network configuration is successful, a success message notification will appear on the display screen.
- If the device status displayed is offline, refresh the device list by swiping down and releasing the screen.

Alternatively, turn off the unit and turn it on again.



06. Operation and Control

06.01. Amazon Alexa

SUPPORTED VOICE COMMANDS

Please use the name of your Air Conditioner as <device>.

Function	Utterance
Power On	<i>"Alexa, turn <device> on."</i>
Power Off	<i>"Alexa, turn <device> off."</i>
Report power state	<i>"Alexa, is <device> powered on?"</i>
Mode Auto	<i>"Alexa, set <device> to auto."</i>
Mode Cool	<i>"Alexa, set <device> to cool."</i>
Mode Heat	<i>"Alexa, set <device> to heat."</i>
Mode Fan	<i>"Alexa, set <device> thermostat to off."</i>
Report mode	<i>"Alexa, what is <device> mode?"</i>
Increase temperature by one degree	<i>"Alexa, make it warmer on <device>."</i>
Decrease temperature by one degree	<i>"Alexa, make it cooler on <device>."</i>
Increase temperature	<i>"Alexa, increase <device> by <temp>."</i>
Decrease temperature	<i>"Alexa, decrease <device> by <temp>."</i>
Set temperature	<i>"Alexa, set <device> to <temp>."</i>
Report setpoints	<i>"Alexa, what temperature is <device> set to?"</i>
Fan Speed Low	<i>"Alexa, set <device> to low speed."</i>
Fan Speed Medium	<i>"Alexa, set <device> to medium speed."</i>
Fan Speed High	<i>"Alexa, set <device> to high speed."</i>
Fan Speed Auto ⁽¹⁾	<i>"Alexa, set <device> to enhanced."</i>
Report controller ambient temperature	<i>"Alexa, what is the temperature on <device>?"</i>
(1) When system is in Fan Mode, Alexa will report the Thermostat status is OFF.	

NOTE

Some features may not be available depending on the model. Please refer to the product catalogue for applicable features

06.02. Google Home**SUPPORTED VOICE COMMANDS**

Function	Utterance
Power On	<i>“Hey Google, turn on air conditioner”</i>
Power Off	<i>“Hey Google, turn off air conditioner”</i>
Report power state	<i>“Hey Google, is air conditioner powered on?”</i>
Mode Auto	<i>“Hey Google, set air conditioner to auto mode”</i>
Mode Cool	<i>“Hey Google, set air conditioner to cool mode”</i>
Mode Heat	<i>“Hey Google, set air conditioner to heat mode”</i>
Mode Fan	<i>“Hey Google, set air conditioner to fan mode”</i>
Report mode	<i>“Hey Google, what is air conditioner mode?”</i>
Increase temperature by one degree	<i>“Hey Google, make it warmer on air conditioner.”</i>
Decrease temperature by one degree	<i>“Hey Google, make it cooler on air conditioner.”</i>
Increase temperature	<i>“Hey Google, increase air conditioner temperature”</i>
Decrease temperature	<i>“Hey Google, decrease air conditioner temperature”</i>
Set temperature	<i>“Hey Google, set air conditioner to <temp> degrees”</i>
Report setpoints	<i>“Hey Google, what temperature is air conditioner set to?”</i>
Fan Speed Low	<i>“Hey Google, set air conditioner to low speed.”</i>

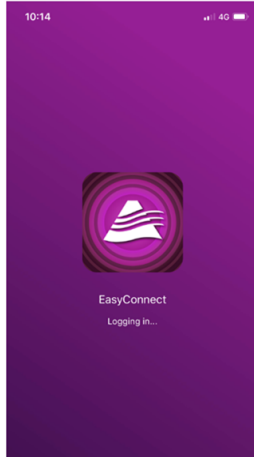
Function	Utterance
Fan Speed Medium	<i>“Hey Google, set air conditioner to medium speed.”</i>
Fan Speed High	<i>“Hey Google, set air conditioner to high speed.”</i>
Fan Speed Auto	<i>“Hey Google, set air conditioner to enhanced.”</i>
Report controller ambient temperature	<i>“Hey Google, what is the temperature on air conditioner?”</i>

NOTE

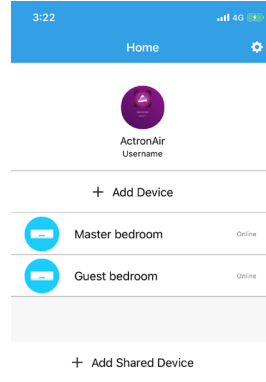
Some features may not be available depending on the model. Please refer to the product catalogue for applicable features

06.03. Smart Device (Easyconnect)

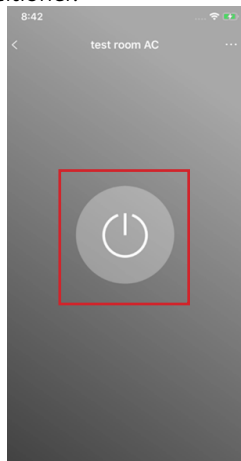
1. When opening the Easyconnect App, you are greeted with this login page.



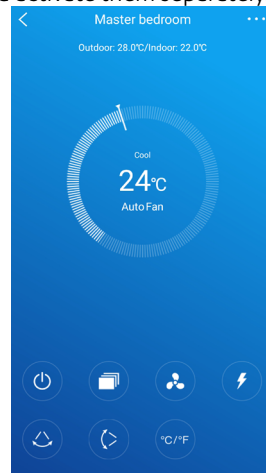
2. After a moment, you are taken to your account screen, which will have your linked air conditioners. Multiple air conditioners can be controlled from the one account.



3. Select an air conditioner to turn on and you are greeted with the standby page - press the power button to activate the air conditioner.



4. Once on, you can control all available options for that air conditioner, to control others, you must go back to the main screen and activate them separately.



07. Smart Device - Operating Functions

Clickwheel

Use the clickwheel to adjust the system set temperature up/down

Vertical Swing

Turns On/Off vertical louvre

Horizontal Swing

Turns On/Off horizontal louvre

Turbo

Sets turbo mode On/Off by pressing the lightning symbol on heat and cool mode

Sleep Mode

8 hour customisable sleep setting depending on the user's comfort.

Check System

Run the system through a diagnostic test to check more than 100 system parameters

Share Device

Share access to the Easyconnect app, by sharing the QR code on each mobile device so that all family members can have easy access to the Easyconnect app on their personal mobile phones.

Timer On/Off

Operating on a 12/24 clock depending on user preference

.....

.....

.....

.....

.....

.....

.....

.....

.....

.....

.....

.....

.....

.....

.....

.....

.....

.....

.....

.....

.....

.....

.....

Dotted lines for writing content.



©Copyright 2019 Actron Engineering Pty Limited ABN 34 002767240. ®Registered Trade Marks of Actron Engineering Pty Limited. ActronAir is constantly seeking ways to improve the design of its products, therefore specifications are subject to change without notice.