



Error Codes

Aurora Wall Hung Split System (SWB)

If the problem persists after performing the checks and diagnostics stated, turn off your unit immediately and contact ActronAir Service on 1800 119 229. Provide them with a detailed description of the unit malfunction as well as your products' model number.

Indoor Unit

Error Codes	Operation Lamp (Flashes)	Timer Lamp	Causes
E0	☆ 1 time	X	Indoor unit EEPROM parameter error
E1	☆ 2 times	X	Communication error between indoor and outdoor units
E3	☆ 4 times	X	Indoor fan speed has been out of control
E4	☆ 5 times	X	Indoor room temperature sensor T1 open circuit or short circuit
E5	☆ 6 times	X	Evaporator coil temperature sensor T2 open circuit or short circuit
EC	☆ 7 times	X	Refrigerant leakage detection
F1	☆ 2 times	O	Outdoor ambient temperature sensor T4 open circuit or short circuit
F2	☆ 3 times	O	Condenser coil temperature sensor T3 open circuit or short circuit
F3	☆ 4 times	O	Compressor discharge temperature sensor T5 open circuit or short circuit
F4	☆ 5 times	O	Outdoor unit EEPROM parameter error
F5	☆ 6 times	O	Outdoor fan speed has been out of control
P0	☆ 1 time	☆	IPM malfunction or IGBT over-strong current protection
P1	☆ 2 times	☆	Over voltage or over low voltage protection
P2	☆ 3 times	☆	High temperature protection of compressor top diagnosis and solution (only SWB52C and SWB70C)
P4	☆ 5 times	☆	Inverter compressor drive error
CP	-	-	Remote On/Off terminal is open circuit

O – ON X – OFF ☆ – Flash



Error Codes

Serene Wall Hung Split System (WRC/WRE)

If the problem persists after performing the checks and diagnostics stated, turn off your unit immediately and contact ActronAir Service on 1800 119 229. Provide them with a detailed description of the unit malfunction as well as your products' model number.

Indoor Unit

Error Codes	Operation Lamp (Flashes)	Timer Lamp	Causes
E0	☆ 1 time	X	Indoor unit EEPROM parameter error
E1	☆ 2 times	X	Communication error between indoor and outdoor units
E3	☆ 4 times	X	Indoor fan speed has been out of control
E4	☆ 5 times	X	Indoor room temperature sensor T1 open circuit or short circuit
E5	☆ 6 times	X	Evaporator coil temperature sensor T2 open circuit or short circuit
E7	-	-	Communication error between the display board and main indoor PCB
EC	☆ 7 times	X	Refrigerant leakage detection
F0	☆ 1 time	X	Overload current protection
F1	☆ 2 times	O	Outdoor ambient temperature sensor T4 open circuit or short circuit
F2	☆ 3 times	O	Condenser coil temperature sensor T3 open circuit or short circuit
F3	☆ 4 times	O	Compressor discharge temperature sensor T5 open circuit or short circuit
F4	☆ 5 times	O	Outdoor unit EEPROM parameter error
F5	☆ 6 times	O	Outdoor fan speed has been out of control
P0	☆ 1 time	☆	IPM malfunction or IGBT over-strong current protection
P1	☆ 2 times	☆	Over voltage or over low voltage protection
P2	☆ 3 times	☆	High temperature protection of IPM module or compressor top
P4	☆ 5 times	☆	Inverter compressor drive error
CP	-	-	Remote On/Off terminal is open circuit

O – ON X – OFF ☆ – Flash





Error Codes

Cascade Split System (URC/CRE)

If the problem persists after performing the checks and diagnostics stated, turn off your unit immediately and contact ActronAir Service on 1800 119 229. Provide them with a detailed description of the unit malfunction as well as your products' model number.

Indoor Unit

Error Codes	Operation Lamp (Flashes)	Timer Lamp	Causes
E0	☆ 1 time	X	Indoor unit EEPROM malfunction
E1	☆ 2 times	X	Communication error between indoor and outdoor units
E3	☆ 4 times	X	Indoor fan speed has been out of control
E4	☆ 5 times	X	Indoor room temperature sensor T1 open circuit or short circuit
E5	☆ 6 times	X	Evaporator coil temperature sensor T2 open circuit or short circuit
EC	☆ 7 times	X	Refrigerant leakage detection
EE	☆ 8 times	X	Water level arm malfunction
E8	☆ 9 times	X	Communication error between master and slave unit (for twin system)
E9	☆ 10 times	X	Another indoor unit malfunction (for twin system)
F0	☆ 1 time	O	Over current protection (for some units)
F1	☆ 2 times	O	Outdoor ambient temperature sensor T4 open circuit or short circuit
F2	☆ 3 times	O	Condenser coil temperature sensor T3 open circuit or short circuit
F3	☆ 4 times	O	Compressor discharge temperature sensor T5 open circuit or short circuit
F4	☆ 5 times	O	Outdoor unit EEPROM malfunction (for some units)
F5	☆ 6 times	O	Outdoor fan speed malfunction
F6	☆ 7 times	O	T2B temperature open or short circuit (for free-match indoor units)

O – ON X – OFF ☆ – Flash



Error Codes

Cascade Split System (URC/CRE)

Indoor Unit

Error Codes	Operation Lamp (Flashes)	Timer Lamp	Causes
F7	☆ 8 times	○	Communication error between auto-lifting panel and sim cassette
F8	☆ 9 times	○	Auto-lifting panel is faulty (for slim cassettes with an auto-lifting panel)
F9	☆ 10 times	○	Auto-lifting panel is not closed (for slim cassettes with an auto-lifting panel)
P0	☆ 1 times	☆	IPM module malfunction
P1	☆ 2 times	☆	DC voltage too high/low protection
P2	☆ 3 times	☆	Top of compressor high temperature protection
P3	☆ 4 times	☆	Low ambient temperature protection
P4	☆ 5 times	☆	Inverter compressor drive protection
P6	☆ 7 times	☆	Compressor voltage protection
P7	☆ 8 times	☆	Outdoor IGBT sensor is faulty

○ – ON X – OFF ☆ – Flash



Error Codes

Cascade Split System (URC/CRE)

Indoor Unit

Error Codes	Causes
E1	Communication malfunction between indoor and outdoor units
F0	Overcurrent protection
F1	Ambient temperature sensor (T4) malfunction
F2	Outdoor heat-exchanger temperature sensor (T3) malfunction
F3	Discharge temperature sensor (T5) malfunction
F4	Outdoor EEPROM malfunction
F5	Outdoor fan speed malfunction
P0	IPM module protection
P1	DC voltage too high / too low protection
P3	Ultra-low ambient temperature protection
P4	Compressor rotor position protection
J0	Evaporator high temperature protection
J1	Condenser high temperature protection
J2	High discharge temperature protection
J3	PFC module protection
J4	Communication error between outdoor main chip and compressor driven chip
J5	High pressure protection
J6	Low pressure protection
P7	IGBT sensor malfunction
J8	AC power input voltage protection

PFC: Power Factor Correction

DSP: Digital Signal Processor

IGBT: Insulated-Gate Bipolar Transistor

ADC: Analog to Digital Converter





Error Codes

Cascade R-32 Split System (URC/CRC)

Indoor Unit

Error Codes	Operation Lamp (Flashes)	Timer Lamp	Causes
EH00 / EH0A	☆ 1 times	X	Indoor unit EEPROM parameter error
EL01	☆ 2 times	X	Indoor / outdoor unit communication error
EH03	☆ 4 times	X	The indoor fan speed is operating outside of the normal range (for some models)
EH60	☆ 6 times	X	Indoor room temperature sensor T1 is in open circuit or has short circuited
EH61	☆ 6 times	X	Evaporator coil temperature sensor T2 is in open circuit or has short circuited
EL0C	☆ 8 times	X	Refrigerant Leakage Detection(for some models)
EH0b	☆ 9 times	X	Communication error between indoor two chips
EH0E	☆ 13 times	X	Water-level alarm malfunction
EC53	☆ 5 times	X	Outdoor room temperature sensor T4 is in open circuit or has short circuited
EC52	☆ 5 times	X	Condenser coil temperature sensor T3 is in open circuit or has short circuited
EC54	☆ 5 times	X	Compressor discharge temperature sensor TP is in open circuit or has short circuited
EC56	☆ 5 times	X	Evaporator coil outlet temperature sensor T2B is in open circuit or has short circuited(for free-match indoor units)
EC51	☆ 5 times	O	Outdoor unit EEPROM parameter error
EC07	☆ 12 times	X	The outdoor fan speed is operating outside of the normal range (for some models)
PC00	☆ 7 times	☆	IPM malfunction or IGBT over-strong current protection
PC01	☆ 2 times	☆	Over voltage or over low voltage protection
PC02	☆ 3 times	☆	Top temperature protection of compressor or High temperature protection of IPM module
PC04	☆ 5 times	☆	Inverter compressor drive error

O – ON X – OFF ☆ – Flash



Error Codes	Cascade R-32 Split System (URC/CRC)
--------------------	--

Indoor Unit

Error Codes	Operation Lamp (Flashes)	Timer Lamp	Causes
PC03	☆ 7 times	☆	High pressure protection or low pressure protection (for some models)
EC0D	☆ 14 times	X	Outdoor unit malfunction
EHbA	--	--	Communication malfunction between external fan module and indoor unit
EH3A	☆ 4 times	X	External fan DC bus voltage is too low protection
EH3b	☆ 4 times	X	External fan DC bus voltage is too high fault
--	☆ 1 times	○	Indoor units mode conflict(match with multi outdoor unit) (for some models)

○ – ON X – OFF ☆ – Flash





Error Codes

Ultra Slim Split Ducted System (URC/LRE)

If the problem persists after performing the checks and diagnostics stated, turn off your unit immediately and contact ActronAir Service on 1800 119 229. Provide them with a detailed description of the unit malfunction as well as your products' model number.

Indoor Unit

Error Codes	Operation Lamp (Flashes)	Timer Lamp	Causes
E0	☆ 1 time	X	Indoor unit EEPROM malfunction
E1	☆ 2 times	X	Communication error between indoor and outdoor units
E3	☆ 4 times	X	Indoor fan speed has been out of control
E4	☆ 5 times	X	Indoor room temperature sensor T1 open circuit or short circuit
E5	☆ 6 times	X	Evaporator coil temperature sensor T2 open circuit or short circuit
EC	☆ 7 times	X	Refrigerant leakage detection
EE	☆ 8 times	X	Water level arm malfunction
E8	☆ 9 times	X	Communication error between master and slave unit (for twin system)
E9	☆ 10 times	X	Another indoor unit malfunction (for twin system)
F0	☆ 1 time	O	Over current protection (for some units)
F1	☆ 2 times	O	Outdoor ambient temperature sensor T4 open circuit or short circuit
F2	☆ 3 times	O	Condenser coil temperature sensor T3 open circuit or short circuit
F3	☆ 4 times	O	Compressor discharge temperature sensor T5 open circuit or short circuit
F4	☆ 5 times	O	Outdoor unit EEPROM malfunction (for some units)
F5	☆ 6 times	O	Outdoor fan speed malfunction
F6	☆ 7 times	O	T2B temperature open or short circuit (for free-match indoor units)

O – ON X – OFF ☆ – Flash



Error Codes **Ultra Slim Split Ducted System (URC/LRE)**

Indoor Unit

Error Codes	Operation Lamp (Flashes)	Timer Lamp	Causes
P0	☆ 1 times	☆	IPM module malfunction
P1	☆ 2 times	☆	DC voltage too high/low protection
P2	☆ 3 times	☆	Top of compressor high temperature protection
P3	☆ 4 times	☆	Low ambient temperature protection
P4	☆ 5 times	☆	Inverter compressor drive protection
P6	☆ 7 times	☆	Compressor voltage protection
P7	☆ 8 times	☆	Outdoor IGBT sensor is faulty

O – ON X – OFF ☆ – Flash





Error Codes

Ultra Slim Split Ducted System (URC/LRE)

Outdoor Unit

Error Codes	Causes
E1	Communication malfunction between indoor and outdoor units
F0	Overcurrent protection
F1	Ambient temperature sensor (T4) malfunction
F2	Outdoor heat-exchanger temperature sensor (T3) malfunction
F3	Discharge temperature sensor (T5) malfunction
F4	Outdoor EEPROM malfunction
F5	Outdoor fan speed malfunction
P0	IPM module protection
P1	DC voltage too high / too low protection
P3	Ultra-low ambient temperature protection
P4	Compressor rotor position protection
J0	Evaporator high temperature protection
J1	Condenser high temperature protection
J2	High discharge temperature protection
J3	PFC module protection
J4	Communication error between outdoor main chip and compressor driven chip
J5	High pressure protection
J6	Low pressure protection
P7	IGBT sensor malfunction
J8	AC power input voltage protection

PFC: Power Factor Correction

DSP: Digital Signal Processor

IGBT: Insulated-Gate Bipolar Transistor

ADC: Analog to Digital Converter





Error Codes Ultra Slim R-32 Split Ducted System (URC/LRE/LRC)

If the problem persists after performing the checks and diagnostics stated, turn off your unit immediately and contact ActronAir Service on 1800 119 229. Provide them with a detailed description of the unit malfunction as well as your products' model number.

Indoor Unit

Error Codes	Operation Lamp (Flashes)	Timer Lamp	Causes
EH00 / EH0A	☆ 1 times	X	Indoor unit EEPROM parameter error
EL01	☆ 2 times	X	Indoor / outdoor unit communication error
EH03	☆ 4 times	X	The indoor fan speed is operating outside of the normal range (for some models)
EH60	☆ 6 times	X	Indoor room temperature sensor T1 is in open circuit or has short circuited
EH61	☆ 6 times	X	Evaporator coil temperature sensor T2 is in open circuit or has short circuited
EL0C	☆ 8 times	X	Refrigerant Leakage Detection(for some models)
EH0b	☆ 9 times	X	Communication error between indoor two chips
EH0E	☆ 13 times	X	Water-level alarm malfunction
EC53	☆ 5 times	X	Outdoor room temperature sensor T4 is in open circuit or has short circuited
EC52	☆ 5 times	X	Condenser coil temperature sensor T3 is in open circuit or has short circuited
EC54	☆ 5 times	X	Compressor discharge temperature sensor TP is in open circuit or has short circuited
EC56	☆ 5 times	X	Evaporator coil outlet temperature sensor T2B is in open circuit or has short circuited(for free-match indoor units)
EC51	☆ 5 times	O	Outdoor unit EEPROM parameter error
EC07	☆ 12 times	X	The outdoor fan speed is operating outside of the normal range (for some models)
PC00	☆ 7 times	☆	IPM malfunction or IGBT over-strong current protection
PC01	☆ 2 times	☆	Over voltage or over low voltage protection
PC02	☆ 3 times	☆	Top temperature protection of compressor or High temperature protection of IPM module
PC04	☆ 5 times	☆	Inverter compressor drive error

O – ON X – OFF ☆ – Flash





Error Codes

Ultra Slim R-32 Split Ducted System (URC/LRE/LRC)

Indoor Unit

Error Codes	Operation Lamp (Flashes)	Timer Lamp	Causes
PC03	☆ 7 times	☆	High pressure protection or low pressure protection (for some models)
EC0D	☆ 14 times	X	Outdoor unit malfunction
EHbA	--	--	Communication malfunction between external fan module and indoor unit
EH3A	☆ 4 times	X	External fan DC bus voltage is too low protection
EH3b	☆ 4 times	X	External fan DC bus voltage is too high fault
--	☆ 1 times	○	Indoor units mode conflict(match with multi outdoor unit) (for some models)

○ – ON X – OFF ☆ – Flash





Error Codes

Ultra Slim R-32 Split Ducted System (URC/LRE/LRC)

Outdoor Unit

Error Codes	Causes
E1	Indoor / outdoor units communication error
F0	Outdoor overcurrent protection
F1	Outdoor room temperature sensor T4 is in open circuit or has short circuited
F2	Condenser coil temperature sensor T3 is in open circuit or has short circuited
F3	Compressor discharge temperature sensor TP is in open circuit or has short circuited
F4	Outdoor EEPROM malfunction
F5	Outdoor fan speed has been out of control
P0	IPM module protection
P1	Over voltage or over low voltage protection
P2	Top temperature protection of compressor
P4	Inverter compressor drive error
J0	High temperature protection of evaporator
J1	High temperature protection of condenser
J2	Temperature protection of compressor discharge
J3	PFC module protection
J4	Communication malfunction between IPM board and outdoor main board
J5	High pressure protection
J6	Low pressure protection
P7	IGBT temperature sensor TH is in open circuit or has short circuited
J8	AC power input voltage protection
LP	Low ambient temperature protection



Error Codes

Multi - Split System (MRE/BRE)

If the problem persists after performing the checks and diagnostics stated, turn off your unit immediately and contact ActronAir Service on 1800 119 229. Provide them with a detailed description of the unit malfunction as well as your products' model number.

Indoor Unit

Error Codes	Operation Lamp (Flashes)	Timer Lamp	Causes
--	--	--	Mode conflict between indoor units
CP	--	--	Off by remote switch
E0	☆ 1 time	X	Indoor unit EEPROM parameter error
E1	☆ 2 times	X	Communication malfunction between indoor and outdoor units
E3	☆ 4 times	X	Indoor fan speed malfunction
E4	☆ 5 times	X	Indoor room temperature sensor (T1) malfunction
E5	☆ 6 times	X	Evaporator coil temperature sensor (T2) malfunction
E7	☆ 9 times	X	Communication error between indoor PCB to Display PCB
EE	☆ 8 times	X	Water-level alarm malfunction (Only for cassette and duct types)
F1	☆ 2 times	O	Outdoor ambient temperature sensor (T4) malfunction
F2	☆ 3 times	O	Condenser coil temperature sensor (T3) malfunction
F3	☆ 4 times	O	Compressor discharge temperature sensor (T5) malfunction
F4	☆ 5 times	O	Outdoor unit EEPROM parameter error
F5	☆ 6 times	O	Outdoor fan speed malfunction
F6	☆ 7 times	O	Indoor coil outlet pipe sensor malfunction (located on outdoor unit low pressure valve)
P0	☆ 1 time	☆	Inverter module (IPM) malfunction
P1	☆ 2 times	☆	Over-voltage or under-voltage protection
P4	☆ 5 times	☆	Compressor drive malfunction
P5	☆ 6 times	☆	Indoor unit mode conflict
P6	☆ 7 times	☆	High or low pressure fault - refer to condenser fault code to determine which. J5 = High Pressure Protection J6 = Low Pressure Protection

O – ON X – OFF ☆ – Flash





Error Codes

Multi - Split System (MRC)

Outdoor Unit

Error Codes	Causes
E0	Outdoor unit EEPROM parameter error
E2	Communication malfunction between indoor and outdoor units
E3	Communication malfunction between IPM board and outdoor main control board
E4	Outdoor temperature sensor (coil sensor T3, ambient sensor T4, Compressor discharge sensor T5, indoor coil outlet pipe sensor T2B) malfunction
E5	Over-voltage or under-voltage protection
E6	PFC module protection
E8	Outdoor fan speed malfunction
F1	Indoor unit A coil outlet temperature sensor malfunction
F2	Indoor unit B coil outlet temperature sensor malfunction
F3	Indoor unit C coil outlet temperature sensor malfunction
F4	Indoor unit D coil outlet temperature sensor malfunction
F5	Indoor unit E coil outlet temperature sensor malfunction
P1	High pressure protection (For MRC-100AS-4, MRC-110AS-5 and MRC-135AS-5)
P2	Low pressure protection (For MRC-100AS-4, MRC-110AS-5 and MRC-135AS-5)
P3	Current overload protection
P4	Compressor discharge temperature protection
P5	Condenser high temperature protection
P6	Inverter module (IPM) protection

PFC: Power Factor Correction

DSP: Digital Signal Processor

IGBT: Insulated-Gate Bipolar Transistor

ADC: Analog to Digital Converter





Error Codes

Wired Controller (WC-02)

Wired Controller

Error Codes	Causes
E0	Phase sequence error or phase malfunction
E1	Communication malfunction between indoor and outdoor units
E2	T1 sensor malfunction
E3	T2A sensor malfunction
E4	T2B sensor malfunction
E5	T3 or T3 or TP sensor malfunction
E6	Zero check malfunction
E7	Indoor EEPROM malfunction
E8	Fan controller out of control
E9	Communication malfunction between main PCB and display board
EA	Compressor overload (4 times)
EB	IPM mould malfunction
EC	Air clean malfunction
ED	Outdoor malfunction protection
EE	Full-water malfunction
EF	Other fault
F0	Communication error between wired controller and indoor unit
F1	Elevating Fascia panel not closed
P0	Evaporator temperature protection
P1	Enter anti-code or defrost mode
P2	Condenser temperature protection
P3	Compressor temperature protection
P4	Discharge pipe temperature protection



Error Codes

Wired Controller (WC-02)

Wired Controller

Error Codes	Causes
P5	Discharge high pressure protection
P6	Discharge low pressure protection
P7	Over-voltage protection
P8	Compressor overload protection
PF	Other fault - see outdoor or indoor unit for error code



Error Codes

Classic Split Ducted System SRE*/SRA/SRG

If the problem persists after performing the checks and diagnostics stated, turn off your unit immediately and contact ActronAir Service on 1800 119 229. Provide them with a detailed description of the unit malfunction as well as your products' model number.

Outdoor CPU	LM7 Wall Controller	LM24 Wall Controller	Function / Fault
0	-	-	Cooling Mode
	Cool & Low Blink 30s	Cool & Low Blink 30s	Anti-Freeze Protection Mode (Low Capacity Mode)
1	-	-	Heating Mode
	Heat & High Blink 30s	Heat & High Blink 30s	Overheat Safety Protection
2	-	-	Heating Mode – Compressor run time > 20 minutes
5	Heat blink every 8 s	Heat blink every 8 s	Heating Mode - indoor coil pre-heat after defrost
6	E6	E6	Fault discharge high temperature (low on refrigerant)
7	E7	E7	Fault outdoor coil sensor (open or short circuit)
9	E9	E9	High or Low Pressure / Phase Error
n/a	E5	E5	Communication error between outdoor and indoor
n/a	E3	E3	Fault room sensor(s) (open or short circuit)
n/a	E4	E4	Fault indoor coil-in sensor (open or short circuit)

NOTES

1. When unit is powered up, the first number shown on LED display will be CPU version number, then 8 followed by normal status code.
2. Fault may not be displayed on the wall control unit until fault occurs several times.
3. LED indicator on Soft Starter (SS9) is on page 39. This SS9 is only for single phase units.
4. * Applicable only to SRE091C/SRG091E.





Error Codes

Classic 2 Split Ducted System CRA/CCA/EVA/EAA/EFA

If the problem persists after performing the checks and diagnostics stated, turn off your unit immediately and contact ActronAir Service on 1800 119 229. Provide them with a detailed description of the unit malfunction as well as your products' model number.

Outdoor CPU	LR7-1 Wall Controller	Category	Function / Fault
oFF	-	Status	Off or Unit Turning Off (flashing)
COOL	-	Status	Cooling Mode or Start Cooling (flashing)
	COOL & LOW blink 30s	Error	Anti-Freeze Protection Mode
HEAt	-	Status	Heating Mode or Start Heating (flashing)
-	HEAT & HIGH blink 30s	Error	Overheat Protection Mode
dEF	-	Status	Defrost Mode
dEF3	-	Status	3 min to Defrost
dEF2	-	Status	2 min to Defrost
dEF1	-	Status	1 min to Defrost
dr-1	-	Status	Demand Response Management 1
dr-2	-	Status	Demand Response Management 2
dr-3	-	Status	Demand Response Management 2
E01	E01	Error	Indoor Fan RPM Feedback Error
E03	E03	Error	Room Temperature Error
-	E04	Error	Indoor Coil Sensor Error
E07	E07	Error	Outdoor Coil Sensor Error
E09	E09	Error	LP Switch Tripped
E11	E11	Error	HP Switch Tripped
E51	E51	Error	IDU - ODU Communication Error
E52	E52	Error	IDU - Wall Controller Communication Error
E55	E55	Error	BMS - ODU Communication Error
E56	E56	Error	No Master Wall Controller Detected

NOTE

E9 and E11 fault codes may not be displayed on the wall control until the fault occurs several times.





Error Codes

ESP Digital Split Ducted System (SRD/SRV)

If the problem persists after performing the checks and diagnostics stated, turn off your unit immediately and contact ActronAir Service on 1800 119 229. Provide them with a detailed description of the unit malfunction as well as your products' model number.

Outdoor CPU	LM7 Wall Controller	LM24 Wall Controller	Function / Fault
0	-	-	Cooling Mode
1	-	-	Heating Mode
2	-	-	Heating Mode - Compressor run time > 20 min
3	HEAT blink every 8 s	HEAT blink every 8 s	Heating Mode - Defrost
4	LOW speed blink 30 s	LOW speed blink 30 s	Over Heat or Anti-Freeze Protection Mode (Low Capacity Mode)
5	HEAT blink every 8 s	HEAT blink every 8 s	Heating Mode - indoor coil pre-heat after defrost
6	E6	E6	Fault discharge high temperature (low on refrigerant)
7	E7	E7	Fault outdoor coil sensor (open or short circuit)
8	E8	E8	Fault outdoor discharge sensor (open or short circuit)
9	E9	E9	High or Low Pressure / Phase Error (3 Phase models only)
-	E5	E5	Communication error between outdoor and indoor
-	E3	E3	Fault room sensor(s) (open or short circuit)
-	E4	E4	Fault indoor coil-in sensor (open or short circuit)
-	E2	E2	Fault indoor coil-out sensor (open or short circuit)

NOTES

1. When unit is powered up, the first number shown on LED display will be CPU version number, then 8 followed by normal status code.
2. Fault may not be displayed on the wall control unit until fault occurs several times.
3. LED indicator on Soft Starter (SS9) is on page 39. This SS9 is only for single phase units.





Error Codes

Advance Split Ducted System CRV/EVV/EAA/EFV

If the problem persists after performing the checks and diagnostics stated, turn off your unit immediately and contact ActronAir Service on 1800 119 229. Provide them with a detailed description of the unit malfunction as well as your products' model number.

Fault and Status Codes

Status Codes Code

LR7-1 / LC7-2	Outdoor Unit CPU	Category	Function / Fault
-	Boot	Status	Unit is starting up
-	oFF	Status	Unit Off or Unit Turning Off (flashing)
COOL	Cool	Status	Unit Cooling Mode or Start Cooling (flashing)
HEAT	HEAt	Status	Unit Heating Mode or Start Heating (flashing)
Defrost Status	dEF	Status	Heating Mode - Defrost
Defrost Status	dEF3	Status	3 min to Defrost
Defrost Status	dEF2	Status	2 min to Defrost
Defrost Status	dEF1	Status	1 min to Defrost
HEAT	HEAt	Status	Heating Mode - Indoor coil pre-heat after defrost
-	oiLr	Status	Oil Return Operation
Energy Saving	dr-1	Status	Demand Response Management 1
Energy Saving	dr-2	Status	Demand Response Management 2
Energy Saving	dr-3	Status	Demand Response Management 3
-	ohP	Status	Unit derating - Overheat Protection Mode
-	dtP	Status	Unit derating - Discharge Temperature Protection Mode
-	cPP	Status	Unit derating - Condenser Pressure Protection Mode
-	hSP	Status	Unit derating - High Suction Pressure Protection Mode
COOL & LOW blink 30s	Cool	Error	Anti Freeze Protection Mode

NOTE

When unit is powered up, "boot" will show in 7 segment display of outdoor board for 30 seconds, followed by normal CPU status codes.





Error Codes

Advance Split Ducted System CRV/EVV/EAA/EFV

Fault Codes

NEO Wall Controller	LR7-1 /LC7-2 Wall Controller	Outdoor Unit CPU	Category / Source	Function / Fault
E01	E01	E01	IDU	Indoor Fan RPM Feedback Error
E03	E03	E03	IDU	Indoor Room Temp. Sensor Error (Open or short circuit)
E04	E04	E04	IDU	Indoor Coil IN Temp. Sensor Error (open or short circuit)
E06	E06	E06	IDU	High Discharge Temp. (Discharge Temp exceeded 120°C)
E07	E07	E07	ODU	Outdoor Coil Temp. Sensor Error (Open or short circuit)
E08	E08	E08	ODU	Discharge Temp. Sensor Error (Open or short circuit)
E09	E09	E09	ODU	LP Switch Tripped
E10	E10	E10	ODU	LP Sensor Error (Open/short circuit)
E11	E11	E11	ODU	HP Switch Tripped
E12	E12	E12	ODU	HP Sensor Error (Open/short circuit)
E13*	E13*	E13*	ODU	VSD HSP Connector (Jumper Pin Missing)
E13	E13	E13	ODU	Other Drive Errors
E15	E15	E15	ODU / VSD	Communication Error Between ODU to VSD
E18	E18	E18	ODU	Suction Temp. Sensor Error (Open/short circuit)
E22	E22	E22	ODU	Ambient Temp. Sensor Error (Open/short circuit)
E26	E26	E26	VSD	VSD Supply Over Current
E27	E27	E27	VSD	VSD Supply Over Voltage
E28	E28	E28	VSD	VSD Temperature High
E29	E29	E29	VSD	VSD Low Supply Voltage
E30	E30	E30	VSD	VSD Trip Lock
E41	E41	E41	VSD	VSD DC Link Voltage Low
E42	E42	E42	ODU	Envelope Protection Error (Extreme Low Evaporating Pressure)
E43	E43	E43	ODU	Envelope Protection Error (High compression ratio)
E44	E44	E44	ODU	Envelope Protection Error (High condensing pressure)

* Applicable only for Advance R-410A (Uno Board)





Error Codes

Advance Split Ducted System CRV/EVV/EAA/EFV

NEO Wall Controller	LR7-1 /LC7-2 Wall Controller	Outdoor Unit CPU	Category / Source	Function / Fault
E45	E45	E45	ODU	Envelope Protection Error (Low compression ratio)
E47	E47	E47	ODU	Compressor Torque Limit Error
E50	E50	E50	ODU	Outdoor Board Configuration Error
E51	E51	E51	IDU / ODU	Communication Error Between Outdoor to Indoor Unit
E52	E52	E52	CMI / ODU	Communication Error Between Indoor Unit to Wall controller
E55	E55	E55	ODU	Communication Error Between BMS to ODU
E56	E56	E56	VSD	No Master Wall Controller Detected
E60	E60	E60	VSD	VSD Compressor Phase Over Current
E61	E61	E61	VSD	VSD Compressor Loss of Phase
E62	E62	E62	VSD	VSD DC Bus Over Voltage
E63	E63	E63	VSD	VSD DC Bus Under Voltage
E64	E64	E64	VSD	VSD Compressor Loss of Rotor
E65	E65	E65	VSD	VSD Compressor U Phase Current Sensor Fault
E66*	E66*	E66*	VSD	VSD AC Voltage Imbalance / AC Input Loss of Phase
E67*	E67*	E67*	VSD	VSD Inverter De-saturation
E68	E68	E68	VSD	VSD Compressor V Phase Current Sensor Fault
E69	E69	E69	VSD	VSD PFC-IGBT Over Temp
E70	E70	E70	VSD	VSD Lost Rotor Position
E71	E71	E71	VSD	VSD Motor Temp Sensor Error
E72	E72	E72	VSD	VSD Precharge Relay Open
E73	E73	E73	VSD	VSD Compressor W Phase Current Sensor Fault
E74	E74	E74	VSD	VSD IGBT Over Current / Choke wiring or failure

* Applicable only for Advance R-410A (Uno Board)

PFC: Power Factor Correction

DSP: Digital Signal Processor

IGBT: Insulated-Gate Bipolar Transistor

ADC: Analog to Digital Converter





Error Codes

Advance Split Ducted System CRV/EVV/EAA/EFV

NEO Wall Controller	LR7-1 /LC7-2 Wall Controller	Outdoor Unit CPU	Category / Source	Function / Fault
E75	E75	E75	VSD	VSD Compressor Phase Current Fold Back Timeout
E76	E76	E76	VSD	VSD Power Module Temp. Fold Back Timeout
E77	E77	E77	VSD	VSD AC Input Current Fold Back Timeout
E78	E78	E78	VSD	VSD PFC-IGBT Temp. Low
E79	E79	E79	VSD	VSD IPM Desat Protection/Compressor HW Over Current
E80	E80	E80	VSD	VSD Motor Temp High
E81	E81	E81	VSD	VSD Board Temp High
E82	E82	E82	VSD	VSD Power Module Temp High
E83	E83	E83	VSD	VSD PFC-IGBT Temp High
E84	E84	E84	VSD	Communication Error in VSD Between DSP to PFC
E85	E85	E85	VSD	Communication Error in VSD Between Comms to DSP
E86	E86	E86	VSD	Compressor Phase Current Imbalance
E87	E87	E87	VSD	VSD 3 Phase PFC Current Imbalance
E88**	E88**	E88**	VSD	VSD Micro Electronic or EEPROM Error
E89	E89	E89	VSD	VSD Motor Over Speed
E90	E90	E90	VSD	VSD Compressor Model Configuration Error
E91	E91	E91	VSD	VSD Inverter Temp Imbalance
E92	E92	E92	VSD	VSD PFC Temp Imbalance
E93	E93	E93	VSD	VSD Motor Temp Low
E94	E94	E94	VSD	VSD Board Temp Low
E95	E95	E95	VSD	VSD Power Module Temp Low or Sensor (Open or short circuit)
E96	E96	E96	VSD	VSD PFC-IGBT Temp Low

** Applicable only for Advance R-32 (Uno Pro Board)

PFC: Power Factor Correction

IGBT: Insulated-Gate Bipolar Transistor





Error Codes

Advance Split Ducted System CRV/EVV/EAA/EFV

NEO Wall Controller	LR7-1 /LC7-2 Wall Controller	Outdoor Unit CPU	Category / Source	Function / Fault
E97	E97	E97	VSD	VSD Comms ADC Failure
E98	E98	E98	VSD	VSD PFC / Input Current Sensor Fault
E99	E99	E99	VSD	VSD Compressor Overload
E100	E100	E100	VSD	VSD PFC Hardware Over Current
E101	E101	E101	VSD	VSD PFC Software Over Current
E102	E102	E102	VSD	VSD PFC Over Voltage
E103**	E103**	E103**	VSD	VSD Power Module Temp Low or Sensor Open fault
E104**	E104**	E104**	VSD	VSD Fault Limit Lockout

** Applicable only for Advance R-32 (Uno Pro Board)

PFC: Power Factor Correction

DSP: Digital Signal Processor

IGBT: Insulated-Gate Bipolar Transistor

ADC: Analog to Digital Converter





Error Codes

Aires Split Ducted System (CRS/EVA)

If the problem persists after performing the checks and diagnostics stated, turn off your unit immediately and contact ActronAir Service on 1800 119 229. Provide them with a detailed description of the unit malfunction as well as your products' model number.

Fault and Status Codes

Status Codes

Outdoor Unit CPU	Category	Function / Fault
oFF	Status	Unit Off or Unit Turning Off (flashing)
Cool	Status	Unit Cooling Mode or Start Cooling (flashing)
HEAt	Status	Unit Heating Mode or Start Heating (flashing)
dEF3	Status	3 min to Defrost
dEF2	Status	2 min to Defrost
dEF1	Status	1 min to Defrost
dEF	Status	Heating Mode - Defrost
HEAt	Status	Heating Mode - Indoor coil pre-heat after defrost
oiLr	Status	Oil Return Operation
dr-1	Status	Demand Response Management 1 - Mode (Compressor Off)
dr-2	Status	Demand Response Management 2 - Mode (System operation restricted to 50% of rated power)
dr-3	Status	Demand Response Management 3 - Mode (System operation restricted to 75% of rated power)
ohP	Status	Unit derating - Overheat Protection Mode
dtP	Status	Unit derating - Discharge Temperature Protection Mode
cPP	Status	Unit derating - Condenser Pressure Protection Mode
hSP	Status	Unit derating - High Suction Pressure Protection Mode



Error Codes

Aires Split Ducted System (CRS/EVA)

Fault Codes

NEO Wall Controller	LR7-1 /LC7-2 Wall Controller	Outdoor Unit CPU	Category / Source	Function / Fault
E01	E01	E01	IDU	Indoor Fan RPM Feedback Error
E03	E03	E03	IDU	Indoor Room Temp. Sensor Error (Open or short circuit)
E04	E04	E04	IDU	Indoor Coil In Temp. Sensor Error (open or short circuit)
E06	E06	E06	IDU	High Discharge Temp. (Discharge Temp exceeded 138°C)
E07	E07	E07	ODU	Outdoor Coil Temp. Sensor Error (Open or short circuit)
E08	E08	E08	ODU	Discharge Temp. Sensor Error (Open or short circuit)
E09	E09	E09	ODU	LP Switch Tripped
E10	E10	E10	ODU	LP Sensor Error (Open/short circuit)
E11	E11	E11	ODU	HP Switch Tripped
E12	E12	E12	ODU	HP Sensor Error (Open/short circuit)
E13	E13	E13	ODU	Other Drive Errors
E15	E15	E15	ODU / VSD	VSD - ODU Modbus Communication Lost
E18	E18	E18	ODU	Suction Temp. Sensor Error (Open/short circuit)
E22	E22	E22	ODU	Ambient Temp. Sensor Error (Open/short circuit)
E26	E26	E26	VSD	VSD Input Over Current
E27	E27	E27	VSD	VSD Input Over Voltage
E28	E28	E28	VSD	VSD Power Module Over Temp
E29	E29	E29	VSD	VSD Input Under Voltage
E30	E30	E30	VSD	VSD Trip Lock
E41	E41	E41	VSD	VSD DC Voltage Low
E42	E42	E42	ODU	Envelope Protection Error (Extreme Low Evaporating Pressure)
E43	E43	E43	ODU	Envelope Protection Error (High compression ratio)
E44	E44	E44	ODU	Envelope Protection Error (High condensing pressure)
E45	E45	E45	ODU	Envelope Protection Error (Low compression ratio)



Error Codes

Aires Split Ducted System (CRS/EVA)

NEO Wall Controller	LR7-1 /LC7-2 Wall Controller	Outdoor Unit CPU	Category / Source	Function / Fault
E47	E47	E47	ODU	Compressor Torque Limit Error
E50	E50	E50	ODU	Outdoor Board Configuration Error
E51	E51	E51	IDU / ODU	Communication Error Between Outdoor to Indoor Unit
E52	E52	E52	IDU	Communication Error Between Indoor Unit to Wall controller
E55	E55	E55	ODU	Communication Error Between BMS to ODU
E56	E56	E56	VSD	No Master Wall Controller Detected
E60	E60	E60	VSD	VSD Compressor Phase Over Current
E61	E61	E61	VSD	VSD Compressor Loss of Output Phase
E62	E62	E62	VSD	VSD DC Bus Over Voltage
E63	E63	E63	VSD	VSD DC Bus Under Voltage
E65	E65	E65	VSD	Compressor Phase Loss Fault
E69	E69	E69	VSD	VSD PFC-IGBT Over Temp
E70	E70	E70	VSD	VSD Lost Rotor Position
E71	E71	E71	VSD	VSD Motor Temp Sensor Error
E72	E72	E72	VSD	VSD Precharge Relay Open
E73	E73	E73	VSD	VSD Compressor W Phase Current Sensor Fault
E74	E74	E74	VSD	VSD IGBT Over Current
E75	E75	E75	VSD	VSD Compressor Phase Current Fold Back Timeout
E76	E76	E76	VSD	VSD Power Module Temp. Fold Back Timeout
E77	E77	E77	VSD	VSD AC Input Current Fold Back Timeout
E78	E78	E78	VSD	VSD PFC-IGBT Temp. Low
E79	E79	E79	VSD	VSD IPM Modular Over Current
E80	E80	E80	VSD	VSD Motor Temp High
E81	E81	E81	VSD	VSD Board Temp High
E82	E82	E82	VSD	VSD Power Module Temp High
E83	E83	E83	VSD	VSD PFC-IGBT Temp High



Error Codes

Aires Split Ducted System (CRS/EVA)

NEO Wall Controller	LR7-1/LC7-2 Wall Controller	Outdoor Unit CPU	Category / Source	Function / Fault
E84	E84	E84	VSD	VSD Communication Lost Between DSP to PFC
E85	E85	E85	VSD	VSD Communication Lost Between Comms to DSP
E88	E88	E88	VSD	VSD Micro Electronic Fault or Drive EEPROM Fault
E90	E90	E90	VSD	VSD Compressor Model Configuration Error
E91	E91	E91	VSD	VSD Inverter Temp Imbalance
E92	E92	E92	VSD	VSD PFC Temp Imbalance
E93	E93	E93	VSD	VSD Motor Temp Low
E94	E94	E94	VSD	VSD Board Temp Low
E95	E95	E95	VSD	VSD Power Module Temp Low or Sensor (Open or short circuit)
E96	E96	E96	VSD	VSD PFC Module Temp. Sensing Circuit Malfunction
E97	E97	E97	VSD	VSD IC Reset Malfunction
E98	E98	E98	VSD	VSD Current Sensing Circuit Malfunction
E99	E99	E99	VSD	VSD Other Malfunction
E100	E100	E100	VSD	VSD Charging Circuit Malfunction
E101	E101	E101	VSD	VSD PFC Software Over Current
E102	E102	E102	VSD	VSD PFC Over Voltage
E103	E103	E103	VSD	VSD Power Module Temp Low or Sensor Open fault
E104	E104	E104	VSD	VSD Fault Limit Lockout

PFC: Power Factor Correction
DSP: Digital Signal Processor

IGBT: Insulated-Gate Bipolar Transistor
ADC: Analog to Digital Converter





Error Codes

ESP Platinum Split Ducted System (CRV/ERV/ARV/FRV/ERM)

If the problem persists after performing the checks and diagnostics stated, turn off your unit immediately and contact ActronAir Service on 1800 119 229. Provide them with a detailed description of the unit malfunction as well as your products' model number.

Fault and Status Codes

Status Codes

Outdoor CPU	LM7/LM24 Wall Controller	LM-ZC	Category	Function / Fault
Off	-	-	Status	Unit Off
Cool	-	-	Status	Cooling Mode
HEAT	-	-	Status	Heating Mode
dEF3	-	-	Status	3 min to defrost
dEF2	-	-	Status	2 min to defrost
dEF1	-	-	Status	1 min to defrost
deF	HEAT blink every 8 s	-	Status	Heating Mode - Defrost
HEAT	E37	-	Status	Heating Mode - indoor coil pre-heat after defrost
dr-1	-	-	Status	DRM1
dr-2	-	-	Status	DRM2
dr-3	-	-	Status	DRM3





Error Codes

ESP Platinum Split Ducted System (CRV/ERV/ARV/FRV/ERM)

Fault Codes

Outdoor CPU	LM7/ LM24 Wall Controller	LM-ZC	Category	Function / Fault
-	E3	E3	VSD	Room Sensor Error (open or short circuit)
-	E4	-	IDU	Indoor Coil Inlet Sensor Error (open or short circuit)
E5	E5	E5	IDU / ODU	Communication Error between Outdoor and Indoor Units
E6	E6	-	VSD	High Discharge Temperature (Discharge Temp exceeded 138°C)
E7	E7	-	ODU	Outdoor Coil Sensor Error (open or short circuit)
E8	E8	-	VSD	Outdoor Discharge Sensor Error (open or short circuit)
E9	E9	-	ODU	LP Tripped
E10	E10	-	VSD	LP Sensor Error (open/short circuit)
E11	E11	-	ODU	HP Tripped
E12	E12	-	VSD	HP Sensor Error (open/short circuit)
E14	E14	-	VSD	Condenser Pressure Low
E15	E15	-	VSD	VSD Communication Error
E17	E17	-	VSD	Peripherals Error
E18	E18	-	VSD	In EEV Module Suction Temp Sensor is Open
E19	E19	-	VSD	In EEV Module Suction Temp Sensor is Short
E22	E22	-	VSD	Ambient Sensor Failure (open/short circuit) - Safe Mode
E23	E23	-	VSD	EEV Board Communication Failure - Safe Mode
E25	E25	-	Status	Ambient Temperature not updated
E26	E26	-	VSD	Over Current
E27	E27	-	VSD	Over Voltage
E28	E28	-	VSD	VSD Temperature High
E29	E29	-	VSD	Low Supply Voltage





Error Codes

ESP Platinum Split Ducted System (CRV/ERV/ARV/FRV/ERM)

Outdoor CPU	LM7/ LM24 Wall Controller	LM-ZC	Category	Function / Fault
E30	E30	-	VSD	Trip Lock
E31	E31	-	VSD	Internal Error
E32 - E33	E32	-	VSD	Envelope Protection (HP/LP Trip Error due to VSD Pressure Sensors)
E34	E34	-	VSD	Derating - High VSD Temperature
E35	E35	-	VSD	Derating - Low Suction Pressure
E36	E36	-	VSD	Derating - Low Condenser Pressure
E37	E37	-	VSD	Derating - High Condenser Pressure
E38	E38	-	VSD	Derating - Output Power Limit
E39	E39	-	VSD	Defrosting Timed-Out
E40	E40	-	VSD	VSD Restarting too Frequently
E41	E41	-	VSD	DC Link Voltage Low

NOTES

1. When unit is powered up, "boot" will show in outdoor board 7 segment display for 30 seconds followed by normal status code.
2. Fault may not be displayed on the wall control unit until fault occurs several times.



Error Codes

ESP QUE Platinum Split Ducted System (CRQ/ERQ/ARV/FRQ)

If the problem persists after performing the checks and diagnostics stated, turn off your unit immediately and contact ActronAir Service on 1800 119 229. Provide them with a detailed description of the unit malfunction as well as your products' model number.

Single Phase

Fault and Status Codes

Status Codes

Outdoor CPU	QT*-1000, master controller (Main Screen - Status Code)	QZ*-100 zone controller	Category	Function / Fault
Off	OFF	OFF	Status	Unit Off
Cool	Cooling (Status Bar)	Cooling	Status	Cooling Mode
HEAt	Heating (Status Bar)	Heating	Status	Heating Mode
deF	defrost status	Heating	Status	Heating Mode - Defrost
HEAt	Heating	Heating	Status	Heating Mode - indoor coil pre-heat after defrost
dEF3 / 2 / 1	-	-	Status	3 min / 2min /1 min to defrost
dr-1 / dr-2 / dr-3	Flash Icon (Stat Bar)	-	Status	DRM1 / DRM2 / DRM3



Error Codes

ESP QUE Platinum Split Ducted System (CRQ/ERQ/ARV/FRQ)

Fault Codes

Outdoor CPU	QT*-1000, master controller (Main Screen - Status Code)	QZ*-100 zone controller	Category	Function / Fault
-	- Tech Menu (E3)	-	IDU	Room Sensor Error (open or short circuit)
-	- Tech Menu (E4)	-	IDU	Indoor Coil Inlet Sensor Error (open or short circuit)
E06	- Tech Menu (E6)	-	VSD	High Discharge Temp. (Discharge Temp exceeded 138oC)
E07	- Tech Menu (E7)	-	ODU	Outdoor Coil Sensor Error (open or short circuit)
E08	- Tech Menu (E8)	-	VSD	Outdoor Discharge Sensor Error (open or short circuit)
E09	- Tech Menu (E9)	-	ODU	LP Tripped
E10	- Tech Menu (E10)	-	VSD	LP Sensor Error (open/short circuit)
E11	- Tech Menu (E11)	-	ODU	HP Tripped
E12	- Tech Menu (E12)	-	VSD	HP Sensor Error (open/short circuit)
E14	- Tech Menu (E14)	-	VSD	Condenser Pressure Low
E15	- Tech Menu (E15)	-	VSD	VSD Communication Error
E17	- Tech Menu (E17)	-	VSD	Peripherals Error
E18 / E19	- Tech Menu (E18 / E19)	-	VSD	In EEV Module Suction Temp Sensor is (Open / Short)
E22	- Tech Menu (E22)	-	VSD	Ambient Sensor Failure (open/short circuit) - Safe Mode
E23	- Tech Menu (E23)	-	VSD	EEV Board Communication Failure - Safe Mode
E25	- Tech Menu (E25)	-	Status	Ambient Temperature not updated
E26 / E27	- Tech Menu (E26 / E27)	-	VSD	Over Current / Over Voltage
E28	- Tech Menu (E28)	-	VSD	VSD Temperature High
E29	- Tech Menu (E29)	-	VSD	Low Supply Voltage
E30	- Tech Menu (E30)	-	VSD	Trip Lock



Error Codes

ESP QUE Platinum Split Ducted System (CRQ/ERQ/ARV/FRQ)

Outdoor CPU	QT*-1000, master controller (Main Screen - Status Code)	QZ*-100 zone controller	Category	Function / Fault
E31	- Tech Menu (E31)	-	VSD	Internal Error
E32 - E33	- Tech Menu (E32 - E33)	-	VSD	Envelope Protection (HP/LP Trip Error due to VSD Pressure Sensors)
E34	- Tech Menu (E34)	-	VSD	Derating - High VSD Temperature
E35 / E36 / E37	- Tech Menu (E35 / E36 / E37)	-	VSD	Derating - Low Suction / Low Condenser / High Condenser Pressure
E38	- Tech Menu (E38)	-	VSD	Derating - Output Power Limit
E39	- Tech Menu (E39)	-	VSD	Defrosting Timed-Out
E40	- Tech Menu (E40)	-	VSD	VSD Restarting too Frequently
E41	- Tech Menu (E41)	-	VSD	DC Link Voltage Low
E05	- Tech Menu (E51)	-	IDU / ODU	Communication error between outdoor and indoor units
-	- Tech Menu (E52)	-	IDU / Controller	Communication error between indoor and master controller
-	- Tech Menu (E53)	-	IDU / Zone Module	IDU VAV Communication error
E99	- Tech Menu (E99)	-	VSD	Envelope Protection.

NOTES

1. When unit is powered up, "boot" will show in outdoor board 7 segment display for 30 seconds, followed by normal status codes.
2. Fault may not be displayed on the wall control unit until fault occurs several times.

* B = Black casing or W = White casing





Error Codes

ESP QUE Platinum Split Ducted System (CRQ/ERQ/ARV/FRQ)

If the problem persists after performing the checks and diagnostics stated, turn off your unit immediately and contact ActronAir Service on 1800 119 229. Provide them with a detailed description of the unit malfunction as well as your products' model number.

Three Phase

Fault Codes

Outdoor CPU	QT*-1000, master controller (Main Screen - Status Code)	QZ*-100 zone controller	Category	Function / Fault
E03	- Tech Menu (E3)	-	IDU	RoomSensor Error
E04	- Tech Menu (E4)	-	VSD	Indoor Coil Out Sensor Error
E06	- Tech Menu (E6)	-	ODU	High Discharge Temperature
E07	- Tech Menu (E7)	-	VSD	Outdoor Coil Sensor Error
E08	- Tech Menu (E8)	-	ODU	Outdoor Discharge Sensor Error
E09	- Tech Menu (E9)	-	VSD	LP Error (When ODU LP switch trips)
E10	- Tech Menu (E10)	-	ODU	LP sensor failure (Open Circuit/ Short Circuit)
E11	- Tech Menu (E11)	-	VSD	HP Error (When ODU HP switch trips)
E12	- Tech Menu (E12)	-	VSD	HP Sensor Failure (Open Circuit / Short Circuit)
E13	- Tech Menu (E13)	-	ODU	VSD HSP Connector (Jumper Pin Missing)
				Other Drive Errors
E15	- Tech Menu (E15)	-	VSD	VSD Communication Error
E18	- Tech Menu (E18)	-	VSD	Suction Temperature Error (Abnormal reading value)
E22	- Tech Menu (E22)	-	VSD	Ambient Sensor Failure (open/short circuit)
E26	- Tech Menu (E26)	-	VSD	Alarm-Over Current
E27	- Tech Menu (E27)	-	VSD	Alarm-Over Voltage
E28	- Tech Menu (E28)	-	Status	Alarm-Drive Temperature High
E29	- Tech Menu (E29)	-	VSD	Alarm-Low Supply Voltage





Error Codes

ESP QUE Platinum Split Ducted System (CRQ/ERQ/ARV/FRQ)

Outdoor CPU	QT*-1000, master controller (Main Screen - Status Code)	QZ*-100 zone controller	Category	Function / Fault
E30	- Tech Menu (E30)	-	VSD	Trip Lock (Drive only)
E41	- Tech Menu (E41)	-	VSD	DC Link Voltage Low
E42	- Tech Menu (E42)	-	VSD	Envelope protection error
E43	- Tech Menu (E43)	-	VSD	Envelope protection error
E44	- Tech Menu (E44)	-	VSD	Envelope Protection error
E45	- Tech Menu (E45)	-	VSD	Envelope protection error
E47	- Tech Menu (E47)	-	ODU	Compressor Torque Limit Error
E50	- Tech Menu (E50)	-	VSD	Outdoor configuration Error
E51	- Tech Menu (E51)	-	VSD	IDU-ODU Communication Error
E52	- Tech Menu (E52)	-	VSD	IDU - Master Controller Communication Error
E53	- Tech Menu (E53)	-	VSD	IDU VAQ Communication error
E60	- Tech Menu (E60)	-	VSD	Compressor Phase Over Current
E62	- Tech Menu (E62)	-	IDU / ODU	DC Bus Over Voltage
E63	- Tech Menu (E63)	-	IDU / Controller	DC Bus Under Voltage
E66	- Tech Menu (E66)	-	IDU / Zone Module	AC Voltage Imbalance
E67	- Tech Menu (E67)	-	VSD	Inverter Desaturation
E69	- Tech Menu (E69)	-	Status	PFC-IGBT Over Temp
E70	- Tech Menu (E70)	-	Status	Lost Rotor Position
E71	- Tech Menu (E71)	-	Status	Motor Thermistor Fault
E72	- Tech Menu (E72)	-	Status	Precharge Relay Open

PFC: Power Factor Correction

IGBT: Insulated-Gate Bipolar Transistor

DSP: Digital Signal Processor

ADC: Analog to Digital Converter





Error Codes

ESP QUE Platinum Split Ducted System (CRQ/ERQ/ARV/FRQ)

Three Phase

Outdoor CPU	QT*-1000, master controller (Main Screen - Status Code)	QZ*-100 zone controller	Category	Function / Fault
E74	- Tech Menu (E74)	-	Status	Compressor Phase Over Current
E75	- Tech Menu (E75)	-	Status	Compressor Phase Current Foldback Timeout
E76	- Tech Menu (E76)	-	Status	Power Module Temp. Fold Back Timeout
E77	- Tech Menu (E77)	-	Status	AC Input Current Foldback Timeout
E78	- Tech Menu (E78)	-	Status	Auto Config Communication Timeout
E80	- Tech Menu (E80)	-	Status	Motor Temp High
E81	- Tech Menu (E81)	-	Status	Board Temp High
E82	- Tech Menu (E82)	-	Status	Power Module Temp High
E83	- Tech Menu (E83)	-	Status	PFC-IGBT Temp High
E84	- Tech Menu (E84)	-	Status	DSP to PFC Communication Lost
E85	- Tech Menu (E85)	-	Status	Comms to DSP Communication Lost
E86	- Tech Menu (E86)	-	Status	Compressor Phase Current Imbalance
E87	- Tech Menu (E87)	-	Status	3 Phase PFC Current Imbalance
E88	- Tech Menu (E88)	-	Status	Micro Electronic Fault or Drive EEPROM Fault
E89	- Tech Menu (E89)	-	Status	Motor Overspeed
E90	- Tech Menu (E90)	-	Status	Compressor Model Configuration Error
E91	- Tech Menu (E91)	-	Status	Inverter Temp Imbalance
E92	- Tech Menu (E92)	-	Status	PFC Temp Imbalance

PFC: Power Factor Correction

IGBT: Insulated-Gate Bipolar Transistor

DSP: Digital Signal Processor

ADC: Analog to Digital Converter





Error Codes

Commercial Split (SCA/SCG) and Package System (PCA/PCG)

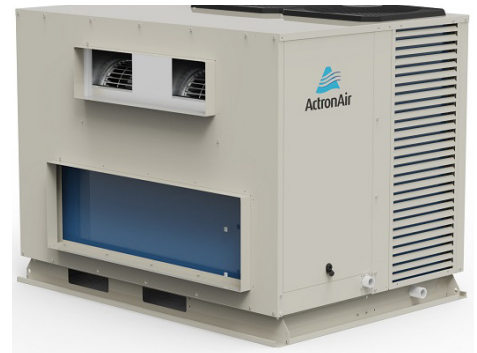
If the problem persists after performing the checks and diagnostics stated, turn off your unit immediately and contact ActronAir Service on 1800 119 229. Provide them with a detailed description of the unit malfunction as well as your products' model number.

Indoor Unit

Outdoor CPU	C7 Wall Controller	Function / Fault
0	-	Cooling Mode
1	-	Cooling Mode - Normal
2	-	Cooling Mode – Compressor run time > 20 min
3	-	Heating Mode – Defrost
5	-	Heating Mode – Indoor Coil Pre-Heat
7	E7	Fault, open circuit outdoor coil sensor
8	E7	Fault, short circuit outdoor coil sensor
9	E9	Fault, High – Low pressure
-	E5	Communication error between outdoor and indoor

NOTES

1. When unit is powered up, the first number shown on LED display will be CPU version number, then 8 followed by normal status codes.
2. Fault may not be displayed on the wall control unit until fault occurs several times.
3. LED indicator on Soft Starter (SS9) is on page 39. This SS9 is only for single phase units.



Error Codes

Variable Commercial Package System (PRV)

If the problem persists after performing the checks and diagnostics stated, turn off your unit immediately and contact ActronAir Service on 1800 119 229. Provide them with a detailed description of the unit malfunction as well as your products' model number.

Fault and Status Codes

Status Codes

LR7-1 / LC7-2	Outdoor Unit CPU	Category	Function / Fault
-	Boot	Status	Unit is starting up
-	oFF	Status	Unit Off or Unit Turning Off (flashing)
COOL	Cool	Status	Unit Cooling Mode or Start Cooling (flashing)
HEAT	HEAt	Status	Unit Heating Mode or Start Heating (flashing)
Defrost Status	dEF	Status	Heating Mode - Defrost
HEAT	HEAt	Status	Heating Mode - Indoor coil pre-heat after defrost
-	oiLr	Status	Oil Return Operation
Energy Saving	dr-1	Status	Demand Response Management 1
Energy Saving	dr-2	Status	Demand Response Management 2
Energy Saving	dr-3	Status	Demand Response Management 3
-	ohP	Status	Unit derating - Overheat Protection Mode
-	dtP	Status	Unit derating - Discharge Temperature Protection Mode
-	cPP	Status	Unit derating - Condenser Pressure Protection Mode
-	hSP	Status	Unit derating - High Suction Pressure Protection Mode
COOL & LOW blink 30s	Cool	Error	Anti Freeze Protection Mode

NOTE

When unit is powered up, "boot" will show in 7 segment display of outdoor board for 30 seconds, followed by normal CPU status codes.



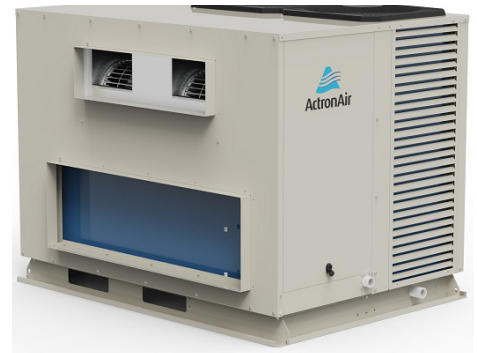


Error Codes

Variable Commercial Package System (PRV)

Fault Codes

NEO Wall Controller	LR7-1/LC7-2 Wall Controller	Outdoor Unit CPU	Category / Source	Function / Fault
E01	E01	E01	IDU	Indoor Fan RPM Feedback Error
E03	E03	E03	IDU	Indoor Room Temp. Sensor Error (Open or short circuit)
E04	E04	E04	IDU	Indoor Coil IN Temp. Sensor Error (open or short circuit)
E06	E06	E06	IDU	High Discharge Temp. (Discharge Temp exceeded 120°C)
E07	E07	E07	ODU	Outdoor Coil Temp. Sensor Error (Open or short circuit)
E08	E08	E08	ODU	Discharge Temp. Sensor Error (Open or short circuit)
E09	E09	E09	ODU	LP Switch Tripped
E10	E10	E10	ODU	LP Sensor Error (Open/short circuit)
E11	E11	E11	ODU	HP Switch Tripped
E12	E12	E12	ODU	HP Sensor Error (Open/short circuit)
E13	E13	E13	ODU	Other Drive Errors
E15	E15	E15	ODU / VSD	Communication Error Between ODU to VSD
E18	E18	E18	ODU	Suction Temp. Sensor Error (Open/short circuit)
E22	E22	E22	ODU	Ambient Temp. Sensor Error (Open/short circuit)
E26	E26	E26	VSD	VSD Supply Over Current
E27	E27	E27	VSD	VSD Supply Over Voltage
E28	E28	E28	VSD	VSD Temperature High
E29	E29	E29	VSD	VSD Low Supply Voltage
E30	E30	E30	VSD	VSD Trip Lock
E41	E41	E41	VSD	VSD DC Link Voltage Low
E42	E42	E42	ODU	Envelope Protection Error (Extreme Low Evaporating Pressure)
E43	E43	E43	ODU	Envelope Protection Error (High compression ratio)
E44	E44	E44	ODU	Envelope Protection Error (High condensing pressure)
E45	E45	E45	ODU	Envelope Protection Error (Low compression ratio)



Error Codes

Variable Commercial Package System (PRV)

NEO Wall Controller	LR7-1 / LC7-2 Wall Controller	Outdoor Unit CPU	Category / Source	Function / Fault
E47	E47	E47	ODU	Compressor Torque Limit Error
E50	E50	E50	ODU	Outdoor Board Configuration Error
E51	E51	E51	IDU / ODU	Communication Error Between Outdoor to Indoor Unit
E52	E52	E52	CMI / ODU	Communication Error Between Indoor Unit to Wall controller
E55	E55	E55	ODU	Communication Error Between BMS to ODU
E56	E56	E56	VSD	No Master Wall Controller Detected
E60	E60	E60	VSD	VSD Compressor Phase Over Current
E62	E62	E62	VSD	VSD DC Bus Over Voltage
E63	E63	E63	VSD	VSD DC Bus Under Voltage
E69	E69	E69	VSD	VSD PFC-IGBT Over Temp
E70	E70	E70	VSD	VSD Lost Rotor Position
E71	E71	E71	VSD	VSD Motor Temp Sensor Error
E72	E72	E72	VSD	VSD Precharge Relay Open
E74	E74	E74	VSD	VSD IGBT Over Current / Choke wiring or failure
E75	E75	E75	VSD	VSD Compressor Phase Current Fold Back Timeout
E76	E76	E76	VSD	VSD Power Module Temp. Fold Back Timeout
E77	E77	E77	VSD	VSD AC Input Current Fold Back Timeout
E78	E78	E78	VSD	VSD PFC-IGBT Temp. Low
E80	E80	E80	VSD	VSD Motor Temp High
E81	E81	E81	VSD	VSD Board Temp High
E82	E82	E82	VSD	VSD Power Module Temp High
E83	E83	E83	VSD	VSD PFC-IGBT Temp High
E84	E84	E84	VSD	Communication Error in VSD Between DSP to PFC
E85	E85	E85	VSD	Communication Error in VSD Between Comms to DSP
E86	E86	E86	VSD	Compressor Phase Current Imbalance
E87	E87	E87	VSD	VSD 3 Phase PFC Current Imbalance





Error Codes

Variable Commercial Package System (PRV)

NEO Wall Controller	LR7-1/LC7-2 Wall Controller	Outdoor Unit CPU	Category / Source	Function / Fault
E88	E88	E88	VSD	VSD Micro Electronic or EEPROM Error
E89	E89	E89	VSD	VSD Motor Over Speed
E90	E90	E90	VSD	VSD Compressor Model Configuration Error
E91	E91	E91	VSD	VSD Inverter Temp Imbalance
E92	E92	E92	VSD	VSD PFC Temp Imbalance
E93	E93	E93	VSD	VSD Motor Temp Low
E94	E94	E94	VSD	VSD Board Temp Low
E95	E95	E95	VSD	VSD Power Module Temp Low or Sensor (Open or short circuit)
E96	E96	E96	VSD	VSD PFC-IGBT Temp Low
E97	E97	E97	VSD	VSD Comms ADC Failure
E103	E103	E103	VSD	VSD Power Module Temp Low or Sensor Open fault
E104	E104	E104	VSD	VSD Fault Limit Lockout

PFC: Power Factor Correction
DSP: Digital Signal Processor

IGBT: Insulated-Gate Bipolar Transistor
ADC: Analog to Digital Converter





Error Codes

Variable Commercial Split (CRV/EVA) and Package System (PKV)

If the problem persists after performing the checks and diagnostics stated, turn off your unit immediately and contact ActronAir Service on 1800 119 229. Provide them with a detailed description of the unit malfunction as well as your products' model number.

Fault and Status Codes - PKV160T-240T

Status Codes

LC7-2 Master Control	Outdoor Unit CPU	Category	Function / Fault
-	oFF	Status	Unit Off or Unit Turning Off (flashing)
COOL	CooL	Status	Unit Cooling Mode or Start Cooling (flashing)
HEAT	HEAt	Status	Unit Heating Mode or Start Heating (flashing)
-	dEF3	Status	3 min to defrost
-	dEF2	Status	2 min to defrost
-	dEF1	Status	1 min to defrost
Defrost Status	dEF	Status	Heating Mode - Defrost
HEAT	HEAt	Status	Heating Mode - Indoor coil pre-heat after defrost
-	oiLr	Status	Oil return operation
Energy Saving	dr-1	Status	DRM1
Energy Saving	dr-2	Status	DRM2
Energy Saving	dr-3	Status	DRM3
-	ohp	Status	Unit derating - Overheat Protection Mode
-	dtP	Status	Unit derating - Discharge Temperature Protection Mode
-	cPP	Status	Unit derating - Condenser Pressure Protection Mode
-	hSP	Status	Unit derating - High Suction Pressure Protection Mode
COOL & LOW blink 30s	CooL	Error	Anti Freeze Protection Mode

NOTE

When unit is powered up, "boot" will show in 7 segment display of outdoor board for 30 seconds, followed by normal CPU status codes.





Error Codes

Variable Commercial Split (CRV/EVA) and Package System (PKV)

Fault Codes

LC7-2 Master Control	Outdoor Unit CPU	Source	Function / Fault
E03	E03	IDU	Indoor Room Temp. Sensor Error (Open or short circuit)
E04	E04	IDU	Indoor Coil In Temp. Sensor Error (Open or short circuit)
E06	E06	ODU	High Discharge Temp. (Discharge Temp exceeded 138°C)
E07	E07	ODU	Outdoor Coil Temp. Sensor Error (Open or short circuit)
E08	E08	ODU	Discharge Temp. Sensor Error (Open or short circuit)
E09	E09	ODU	LP Switch Tripped
E10	E10	ODU	LP Sensor Error (Open/short circuit)
E11	E11	ODU	HP Switch Tripped
E12	E12	ODU	HP Sensor Error (Open/short circuit)
E13	E13	ODU	Other Drive Errors
E15	E15	ODU / VSD	Communication Error Between ODU to VSD
E18	E18	ODU	Suction Temp. Sensor Error (Open/short circuit)
E22	E22	ODU	Ambient Temp. Sensor Error (Open/short circuit)
E26	E26	VSD	VSD Supply Over Current
E27	E27	VSD	VSD Supply Over Voltage
E28	E28	VSD	VSD Temperature High
E29	E29	VSD	VSD Low Supply Voltage
E30	E30	VSD	VSD Trip Lock
E41	E41	VSD	VSD DC Link Voltage Low
E42	E42	ODU	Envelope Protection Error (Extreme low evaporating pressure)
E43	E43	ODU	Envelope Protection Error (High compression ratio)
E44	E44	ODU	Envelope Protection Error (High condensing pressure)
E45	E45	ODU	Envelope Protection Error (Low compression ratio)
E47	E47	ODU	Compressor Torque Limit Error



Error Codes

Variable Commercial Split (CRV/EVA) and Package System (PKV)

LC7-2 Master Control	Outdoor Unit CPU	Source	Function / Fault
E50	E50	ODU	Outdoor Board Configuration Error
E51	E51	IDU / ODU	Communication Error Between Outdoor to Indoor Unit
E53	E53	CMI / ODU	Communication Error Between Indoor to Master Control
E54	E54	IDU	Triggers when no modbus packets are received from 485 indoor fan within 30 secs clears when packets are received within 30 secs.
E55	E55	ODU	Communication Error Between BMS to ODU
E56	E56	CMI	No Master Wall Control Detected
E60	E60	VSD	VSD Compressor Phase Over Current
E62	E62	VSD	VSD DC Bus Over Voltage
E63	E63	VSD	VSD DC Bus Under Voltage
E66	E66	VSD	VSD AC Voltage Imbalance
E67	E67	VSD	VSD Inverter De-saturation
E69	E69	VSD	VSD PFC-IGBT Over Temp
E70	E70	VSD	VSD Lost Rotor Position
E71	E71	VSD	VSD Motor Temp Sensor Error
E72	E72	VSD	VSD Precharge Relay Open
E74	E74	VSD	VSD Compressor Phase Over Current
E75	E75	VSD	VSD Compressor Phase Current Fold Back Timeout
E76	E76	VSD	VSD Power Module Temp. Fold Back Timeout
E77	E77	VSD	VSD AC Input Current Fold Back Timeout
E78	E78	VSD	VSD Auto Config Communication Timeout
E80	E80	VSD	VSD Motor Temp High
E81	E81	VSD	VSD Board Temp High
E82	E82	VSD	VSD Power Module Temp High
E83	E83	VSD	VSD PFC-IGBT Temp High





Error Codes

Variable Commercial Split (CRV/EVA) and Package System (PKV)

LC7-2 Master Control	Outdoor Unit CPU	Source	Function / Fault
E84	E84	VSD	Communication Error in VSD Between DSP to PFC
E85	E85	VSD	Communication Error in VSD Between Comms to DSP
E86	E86	VSD	Compressor Phase Current Imbalance
E87	E87	VSD	VSD 3 Phase PFC Current Imbalance
E88	E88	VSD	VSD Micro Electronic or EEPROM Error
E89	E89	VSD	VSD Motor Over Speed
E90	E90	VSD	VSD Compressor Model Configuration Error
E91	E91	VSD	VSD Inverter Temp Imbalance
E92	E92	VSD	VSD PFC Temp Imbalance
E93	E93	VSD	VSD Motor Temp Low
E94	E94	VSD	VSD Board Temp Low
E95	E95	VSD	VSD Power Module Temp Low or Sensor (Open or short circuit)
E96	E96	VSD	VSD PFC-IGBT Temp Low
E97	E97	VSD	VSD Comms ADC Failure

PFC: Power Factor Correction
DSP: Digital Signal Processor

IGBT: Insulated-Gate Bipolar Transistor
ADC: Analog to Digital Converter





Error Codes

Variable Commercial Split (CRV/EVA) and Package System (PKV)

Fault and Status Codes - PKV290T-330T

Error Codes Display LC7-2 / ODB	Category	Function / Fault
E01	IDU	Indoor Fan RPM feedback Error
E02	IDU	Indoor Coil Sensor Error
E03	IDU	Indoor Room Temperature Sensor Error
E06	ODU	High Discharge Line Temperature
E07	ODU	Outdoor Coil Sensor Error
E08	ODU	Outdoor Discharge Temperature Sensor Error
E09	ODU	LP Switch Trip / Phase Sequence Relay Fault
E10	ODU	LP Transducer Error
E11	ODU	HP Switch Trip
E12	ODU	HP Transducer Error
E13	ODU	Other Drive Errors
E18	ODU	Suction Temperature Sensor Error
E22	ODU	Ambient Sensor Error
E50	ODU	Outdoor Board Configuration Error
E51	IDU / ODU	Indoor - Outdoor Communication Error
E52	IDU	Indoor - Wall Controller Communication or Multiple ID on Wall Controller
E54	IDU	Triggers when no modbus packets are received from 485 indoor fan within 30 secs clears when packets are received within 30 secs.
E56	IDU	No Master Wall Controller Detected

NOTE

When unit is powered up, "boot" will show in 7 segment display of outdoor board for 30 seconds, followed by normal controller status codes.





Error Codes

Variable Commercial Split (CRV/EVA) and Package System (PKV)

Fault and Status Codes - CRV/EVA 720T-960T Status Codes

Outdoor Unit CPU	Category	Function / Fault
oFF	Status	Unit Off or Unit Turning Off (flashing)
Cool	Status	Unit Cooling Mode or Start Cooling (flashing)
HEAt	Status	Unit Heating Mode or Start Heating (flashing)
dEF3	Status	3 min to Defrost
dEF2	Status	2 min to Defrost
dEF1	Status	1 min to Defrost
dEF	Status	Heating Mode - Defrost
HEAt	Status	Heating Mode - Indoor coil pre-heat after defrost
oilr	Status	Oil Return Operation
dr-1	Status	sDemand Response Management 1 - Mode (Compressor Off)
dr-2	Status	Demand Response Management 2 - Mode (System operation restricted to 50% of rated power)
dr-3	Status	Demand Response Management 3 - Mode (System operation restricted to 75% of rated power)
ohP	Status	Unit derating - Overheat Protection Mode
dtP	Status	Unit derating - Discharge Temperature Protection Mode
cPP	Status	Unit derating - Condenser Pressure Protection Mode
hSP	Status	Unit derating - High Suction Pressure Protection Mode
b-0	Status	System configuration check - Memory
b-1	Status	System configuration check - Outdoor fan
b-2	Status	System configuration check - Family / Capacity / Circuit
b-3	Status	System configuration check - VSD Configuration
b-4	Status	System configuration check - Boot finished





Error Codes	Variable Commercial Split (CRV/EVA) and Package System (PKV)
--------------------	---

Fault Codes

Digit 1	Digit 2	Digit 3 + 4	Error Description
A = Outdoor unit	*1 = Circuit-1 **2 = Circuit-2	06	Discharge temperature high
		07	Outdoor coil temperature sensor failure
		08	Discharge temperature sensor failure
		09	LP pressure switch open circuit
		10	LP pressure sensor failure
		11	HP pressure switch open circuit
		12	HP pressure sensor failure
		15	Desuperheater sensor failure
		18	Suction temperature sensor failure
		22	Ambient temperature sensor failure
		50	Configuration error
B = Indoor unit	1* / 2**	01	Indoor coil temperature sensor failure
		02	Room temperature sensor failure
		03	Filter clogged
		04	Filter pressure sensor failure
		05	Static pressure sensor failure
		06	Low airflow warning
		07	Low airflow error
		08	CO2 sensor failure
		09	Outdoor TRH Sensor failure
		10	Indoor TRH sensor failure
		11	Indoor drain pan overflow sensor error





Error Codes

Variable Commercial Split (CRV/EVA) and Package System (PKV)

Digit 1	Digit 2	Digit 3 + 4	Error Description
C = Compressor Envelope	1* / 2**	01	Compressor phase overcurrent
		02	AC Input overcurrent
		03	DC bus over voltage
		04	DC bus under voltage
		05	AC input over voltage
		06	AC input under voltage
		07	AC voltage imbalance
		08	Inverter desaturation
d = Drive	1* / 2**	10	Comp Phase Lost
		11	Lost Comp Control
		12	Power module over temperature
		14	Fault Compressor Start-up
		15	Motor thermistor fault
		17	DC voltage low
		18	Compressor phase over current intermediate
		19	Compressor phase current foldback
		20	Power module temperature foldback timeout
		21	AC input current foldback timeout
		23	Modbus communication lost
		24	Auto config communication failure
		26	Motor temperature high
		27	Board temperature high
		28	Power module temperature high
29	PFC IGBT temperature high		
30	DSP PFC Communication lost		
31	Comms to DSP comms lost		





Error Codes

Variable Commercial Split (CRV/EVA) and Package System (PKV)

Digit 1	Digit 2	Digit 3 + 4	Error Description
d = Drive	1* / 2**	32	Compressor phase current imbalance
		33	Three phase PFC current imbalance
		34	Micro electronics fault
		35	Motor overspeed
		38	Compressor model config error
		48	Inverter temp imbalance
		49	PFC temperature imbalance
		54	Communication ADC failure
E = Outdoor fan F = Indoor fan	1* / 2**	01	Phase failure or line under voltage
		03	Output stage overheated
		04	Communication error between master and slave controller
		05	Fan Error
		06	Motor overheated
		07	Hall sensor error
		08	Motor blocked
		09	Speed limit exceeded
		11	Rotor position sensor calibration error
		13	DC-link under voltage



Error Codes Variable Commercial Split (CRV/EVA) and Package System (PKV)

Digit 1	Digit 2	Digit 3 + 4	Error Description
H = Communication	1* / 2**	15	VSD communication failure
		51	IDU-ODU communication failure
		52	WC communication failure
		54	IDU fan communication failure
		55	ODU communication failure
		56	Master WC communication failure
		57	ODU fan communication failure
		58	CO2 sensor communication failure
		59	Outdoor TRH sensor communication failure
		60	Indoor TRH sensor communication failure

* Circuit 1, ** Circuit 2, *** Indoor Unit

Reading the error code

Digit 1	Digit 2	Digit 3 + 4
Source	Circuit #	Error code

For Example:

Digit 1	Digit 2	Digit 3 + 4	Error code	Error Description
A	1	06	A106	Discharge temperature high

ADC: Analog to Digital Converter

DSP: Digital Signal Processor

IGBT: Insulated-Gate Bipolar Transistor

PFC: Power Factor Correction





Error Codes

Tri-Capacity Split (CAY/EVY/ELY) and Package System (PKY)

If the problem persists after performing the checks and diagnostics stated, turn off your unit immediately and contact ActronAir Service on 1800 119 229. Provide them with a detailed description of the unit malfunction as well as your products' model number.

Outdoor Unit

Control Interface CP05/CP10	Function / Fault
Discharge Temp 1 / High Pressure Comp 1 Fault	Temperature Out of Range / Compressor 1 High Pressure
Discharge Temp 2 / High Pressure Comp 2 Fault	Temperature Out of Range / Compressor 2 High Pressure
Compressor 1 LP Fault	Compressor 1 Low Pressure
Compressor 2 LP Fault	Compressor 2 Low Pressure
Outdoor Coil Temp 1 Fault	Temperature Out of Range
Outdoor Coil Temp 2 Fault	Temperature Out of Range
Room Air Temperature Sensor Fault	Temperature Out of Range
Outside Air Temperature Sensor Fault	Temperature Out of Range
Indoor Coil Sensor Fault	Temperature Out of Range
Filter Alarm	Air Filter Timer Timed-Out
Anti-Freeze Protection	Indoor Coil Temperature Too Low



Error Codes

Hercules Package System (PKV)

If the problem persists after performing the checks and diagnostics stated, turn off your unit immediately and contact ActronAir Service on 1800 119 229. Provide them with a detailed description of the unit malfunction as well as your products' model number.

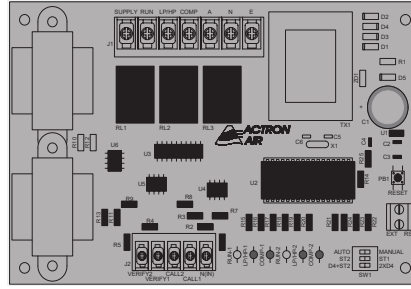
Alarm Number	Description	Type	Causes
AL03	Probe 1 Faulty wiring / open or short circuit	Warning	Low Pressure Compressor 1 Sensor Fault
AL04	Probe 2 Faulty wiring / open or short circuit	Warning	Suction Compressor 1 Temperature Sensor Fault
AL05	Probe 3 Faulty wiring / open or short circuit	Alarm	Low Pressure Compressor 2 Sensor Fault
AL06	Probe 4 Faulty wiring / open or short circuit	Alarm	Suction Compressor 2 Temperature Sensor Fault
AL07	Probe 5 Faulty wiring / open or short circuit	Alarm	High Pressure Comp 1 Sensor Fault
AL08	Probe 6 Faulty wiring / open or short circuit	Alarm	Outdoor Coil Comp 1 Temperature Sensor Fault
AL09	Probe 7 Faulty wiring / open or short circuit	Alarm	High Pressure Comp 2 Sensor Fault
AL10	Probe 8 Faulty wiring / open or short circuit	Warning	Outdoor Coil Comp 2 Temperature Sensor Fault
AL11	Probe 9 Faulty wiring / open or short circuit	Warning	Return Air Temperature Sensor Fault
AL12	Probe 10 Faulty wiring / open or short circuit	Warning	Outside Air Temperature Sensor Fault



Error Codes

Hercules Package System (PKV)

Alarm	Operation Lamp (Flashes)	Timer Lamp	Causes
AL13	Probe 11 Faulty wiring / open or short circuit	Alarm	Supply Air Temperature Sensor Fault
AL17	Comp1 HP/LP Switch	Alarm	>4000kPa / <300kPa (PKV1400)
AL18	Comp2 HP/LP Switch		>4502kPa / <300kPa (PKV1700) >4000kPa / <300kPa (PKV2000)
AL23 / AL24	Comp 1 / Comp 2 Overload	Alarm	Drive Alarm High Current
AL28 AL29 AL30 AL31	Supply Fan 1 Device Offline Supply Fan 2 Device Offline Supply Fan 3 Device Offline Supply Fan 4 Device Offline	Alarm	Communication loss
AL32 AL33 AL34 AL35	Outdoor Fan 1 Device Offline Outdoor Fan 2 Device Offline Outdoor Fan 3 Device Offline Outdoor Fan 4 Device Offline	Alarm	Communication loss
AL210	Supply Air Filter Cleaning Notification	Warning	Filter Dirty
AL211	Supply Air Pressure sensor alarm	Warning	Air pressure < 15 Pa and fan speed > 250rpm
AL141 / AL181	VSD 1 / VSD2 Device Offline	Alarm	Communication loss



Error Codes Fault Detection Board

If the problem persists after performing the checks and diagnostics stated, turn off your unit immediately and contact ActronAir Service on 1800 119 229. Provide them with a detailed description of the unit malfunction as well as your products' model number.

Stage 1 Detection

LED Indication (on D4FD1)						Fault / Status
RUN-1 (15)	LP/HP-1 (16)	COMP-1 (17)	RUN-2 (18)	LH/HP-2 (19)	COMP-2 (20)	
Flashing	Off	Off	Off	Off	Off	Power is supplied to board. Unit is on standby. (normal operation)
On	Off	Off	Off	Off	Off	Stage 1 compressor running (normal operation)
On	On	Off	Off	Off	Off	LP or HP has tripped (fault)
On	Off	On	Off	Off	Off	Compressor cut-out on safety (fault)

Stage 2 Detection

LED Indication (on D4FD1)						Fault / Status
RUN-1 (15)	LP/HP-1 (16)	COMP-1 (17)	RUN-2 (18)	LH/HP-2 (19)	COMP-2 (20)	
On	Off	Off	Off	Off	Off	Stage 1 compressor running (normal operation)
On	Off	Off	On	Off	Off	Stage 1 and Stage 2 compressor running (normal operation)
On	Off	Off	On	On	Off	LP or HP has tripped on Stage 2 (fault)
On	Off	Off	On	Off	On	Stage 2 Compressor cut-out on safety (fault)





Error Codes

Single Phase Soft Start (SS1P)

If the problem persists after performing the checks and diagnostics stated, turn off your unit immediately and contact ActronAir Service on 1800 119 229. Provide them with a detailed description of the unit malfunction as well as your products' model number.

SS9 LED Indication	Causes
On between 2-3 minutes (before start is allowed)	Random power up delay
Off	Ready to start
On	Compressor running
On for 2 mins 50 secs (after compressor stopped)	Anti-cycle protection delay
On for a minimum of 5 mins 50 secs	Start to start protection delay
1 blink - resets after 5 mins 50 secs	High running current trip
2 blinks - resets after 5 mins 50 secs	Low running current trip
3 blinks - resets after 5 mins 50 sec*	Locked start capacitor fault (lock out)
4 blinks - resets after 5 mins 50 sec*	Locked rotor detected (lock out)
5 blinks - until voltage is rectified	Low mains voltage
6 blinks - resets after 5 mins 50 sec*	External run capacitor fault (lockout)

* Five lock errors in a row will cause the soft starter to lock out - cycle mains to reset.

** LED is located on the lower right corner of the SS9



Error Codes	Actron Connect (ACM-2)
--------------------	-------------------------------

LED Indication (Actron Connect Module)	Causes
RED – Power	ON for Power
	OFF for No Power
BLUE – WiFi	Flashing for no connection
	RAPID FLASHING for connecting to network.
	SLOW PULSE in access point mode
	SOLID ON when connected.

